

Pasadena County Road No 2

C. S. 6698 February 1882

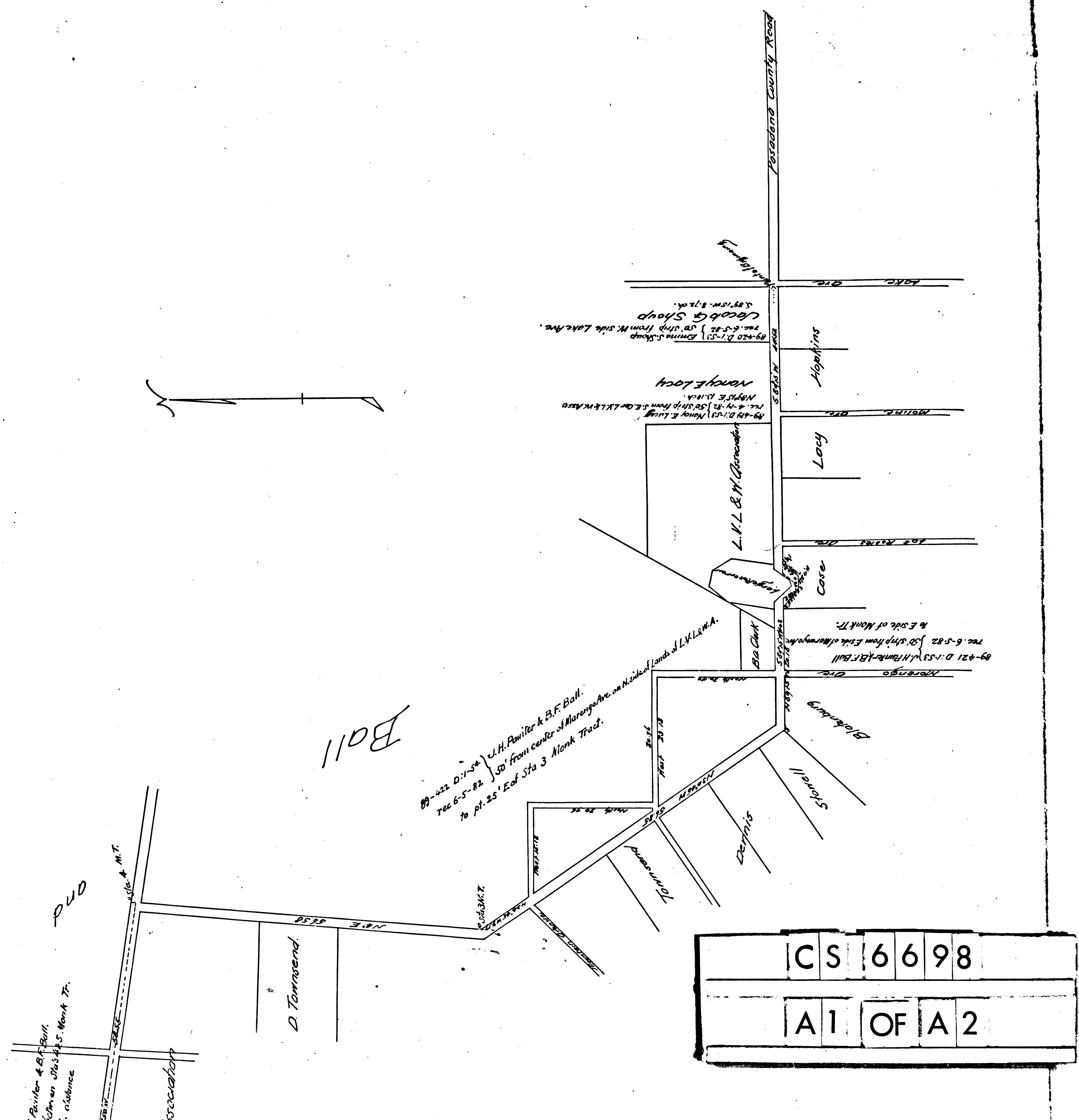
by E.T. Wright County Surveyor

Scale 10 chains to an inch
Road 50 feet wide

Road Book 12 Page 18

INDEX 8
INDEX 28

For Arroyo Blvd. see C.F. 987



C	S	6	6	9	8
A	1	OF	A	2	

