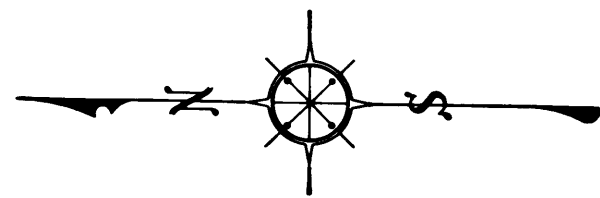


AZUSA AVE.
 GLADSTONE ST. TO SAN BERNARDINO RD.
AZUSA ROAD
NO. 3

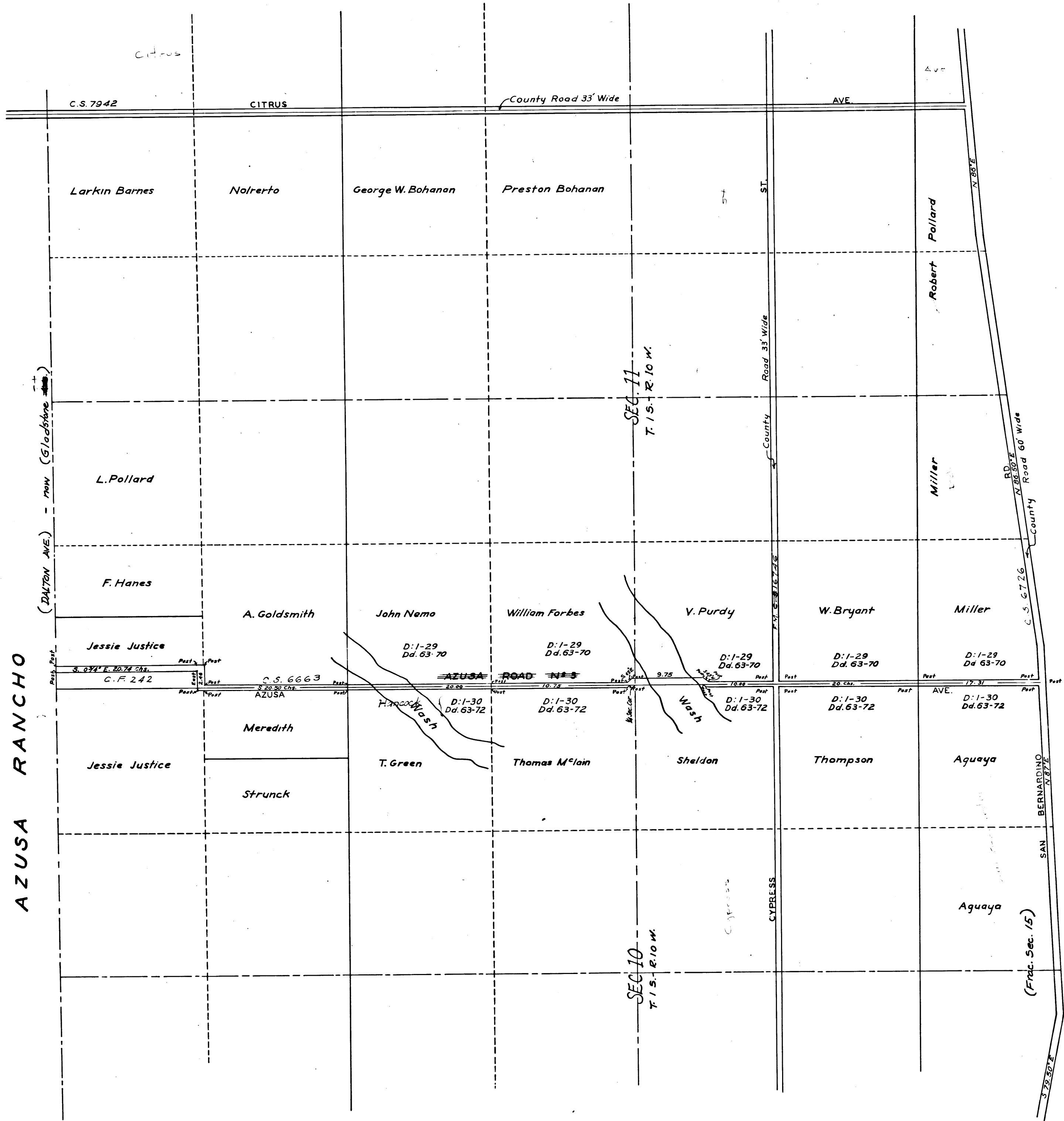
Surveyed Feb. 1879 J.E. Jackson Co. Surveyor
 Rd. Bk. 12-5
 County Surveyors Map No. 6701
 (ROAD 33' WIDE)
 Note: For later survey see C.S. Map No. 7684
 I. M. 47

AZUSA ROAD NO. 3 NOW CALLED AND KNOWN AS "AZUSA AVE."
 County Road - 33' wide on the East side "CITRUS AVE."
 " " " " running east and west "CYPRESS AVE."
 " " " " on the South, running east and west on this map
 is an irregular course now called and known as "SAN BERNARDINO ROAD"
 For deeds widening to 60' wide see C.S. 6663



Retraced by H. Barrio, June, 1959
 Checked by R.J. Black

CS 6701



AZUSA RANCHO

PUENTE RANCHO