

SLAUSON AVE.
MAIN ST. TO WESTERN AVE.

Index # 2477

~~Vernon & Florence Road~~

On Sec-Line between Secs 18 & 19, T.2S.P.13N & Secs 13 & 24 T.2S.P.14N.

May 1888 by John Goldsmithy Co Sur.

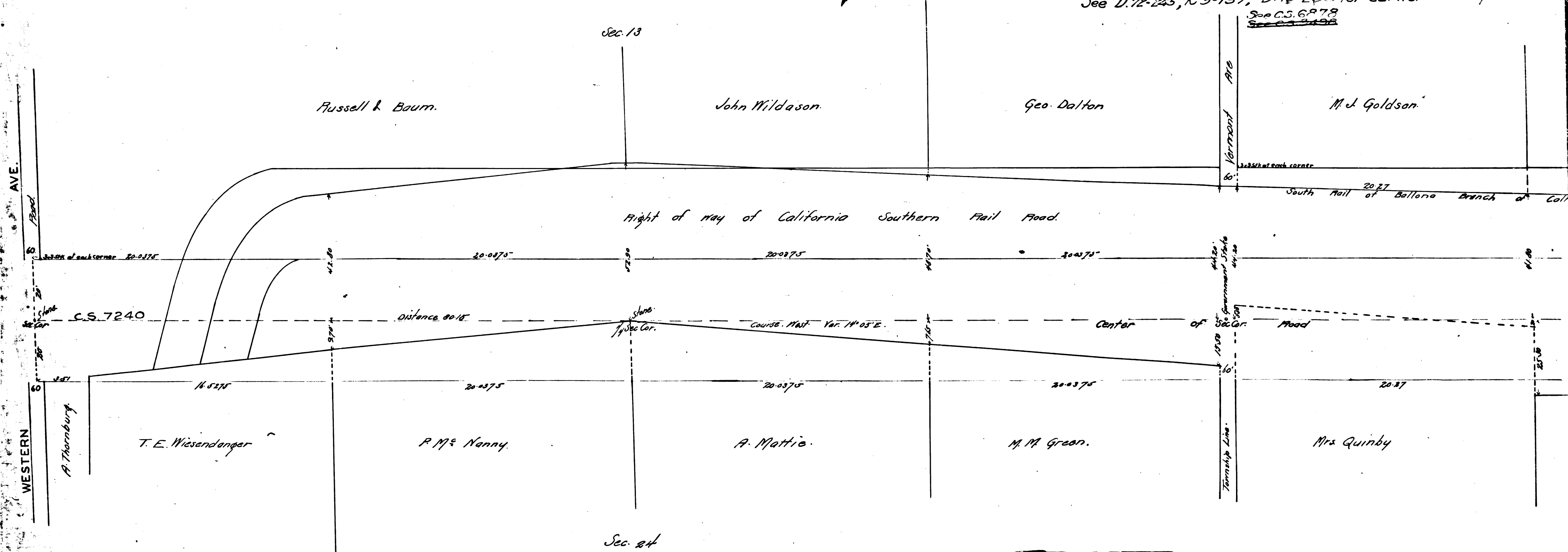
Scale { Lengths - 4 chs - 1 in.
Widths - 20' - 1"

C.S. 6704 Filed June 9, 1888.

Road Book 1-11.

T.2S.P.14N.

R.3-204
Known as Slauson Ave.
See D.72-245, R.3-137, D.19-238 for earlier survey and decl.
See C.S. 6878



CS	6704	
A1	OF	A2

SLAUSON AVE.
MAIN ST. TO WESTERN AVE.

Index # 2487

~~Vernon & Florence Road~~

On Sec. Line between Secs 18 & 19, T. 2. S. R. 13. N. & Secs 13 & 24 T. 2. S. R. 14. N.

May 1888 by John Goldsmithy Co. Sur.

Scale { Lengths - 4 chs - 1 in.
Widths - 20' - 1"

C.S. 6704 Filed June 9, 1888.

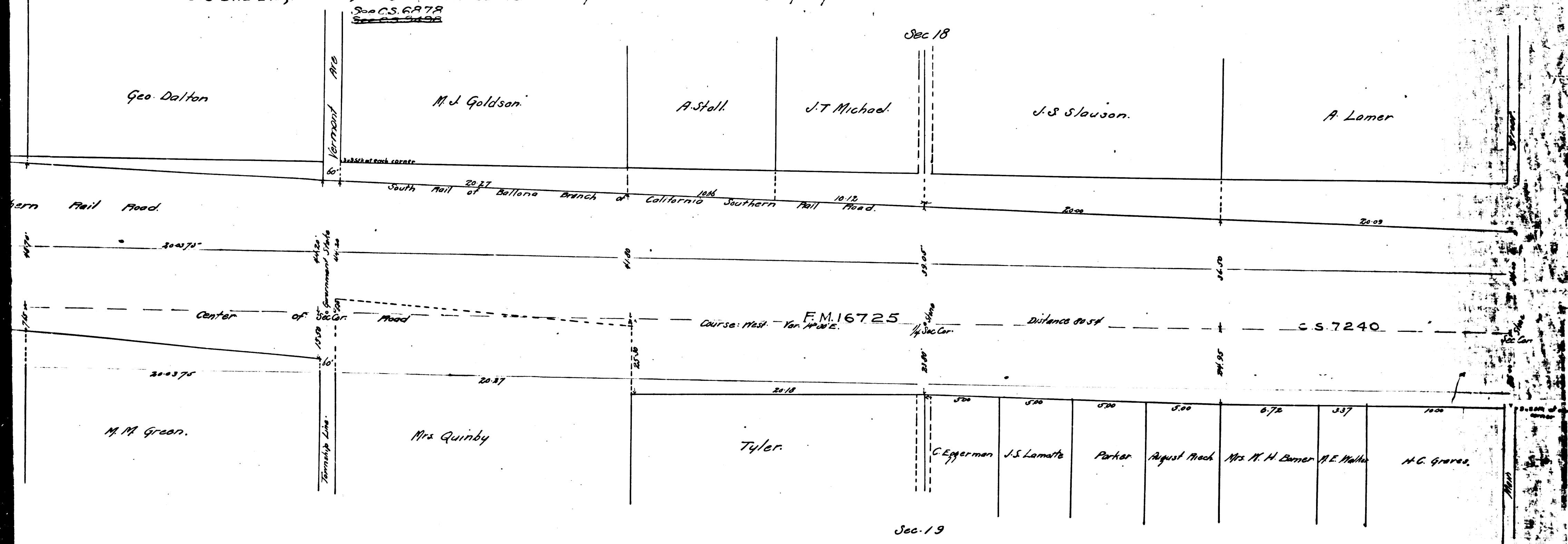
Road Book 1-11.

R. 3-204

Known as Slauson Ave.

See D. 72-245, R. 3-137, D: 19-238 for earlier survey and declaration of Public Highway. T. 2. S. R. 13. N.

See C.S. 6878
See C.S. 6899



CS	6	7	0	4
A	2	OF	A	2