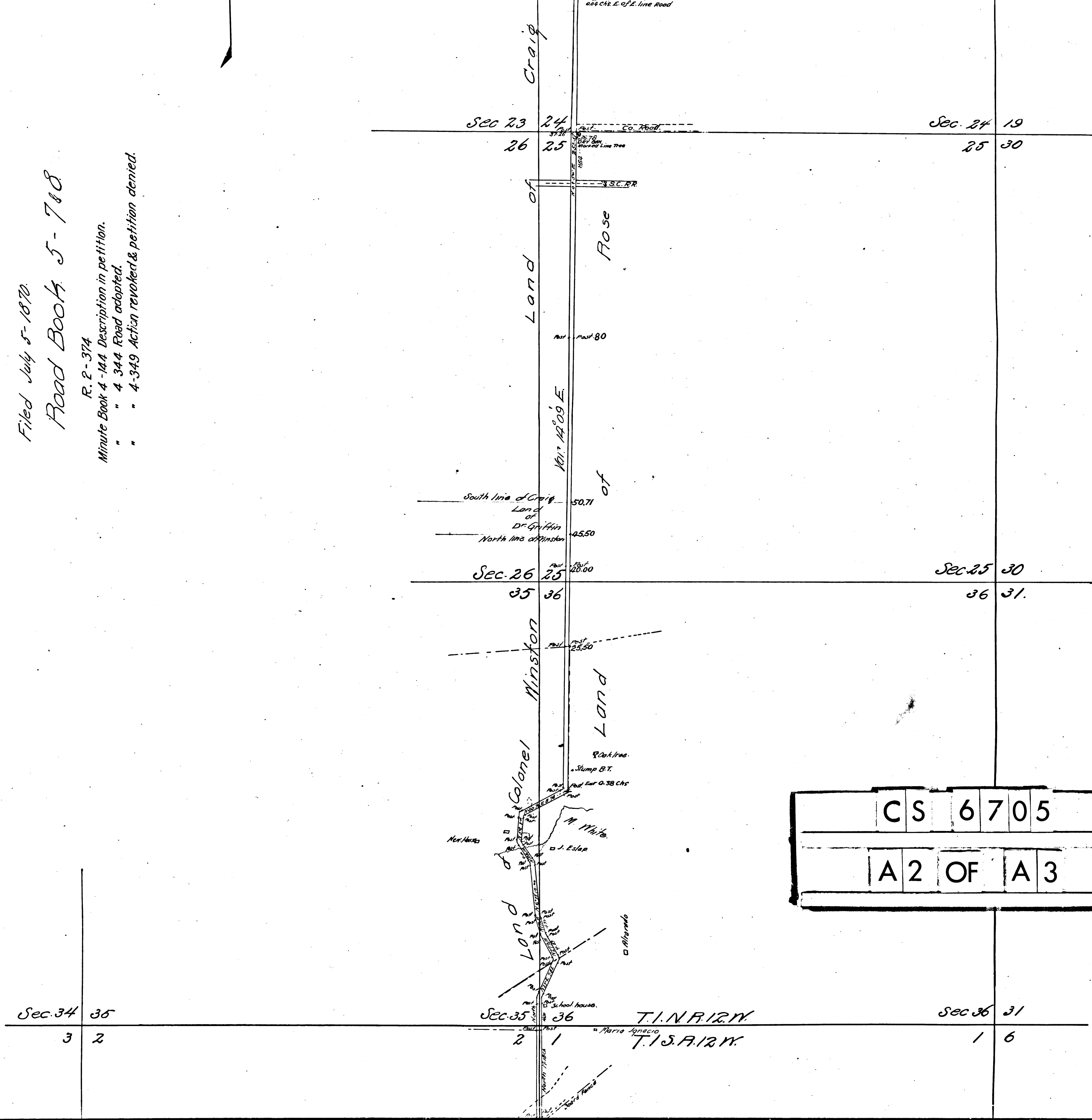


Santa Anita County Road

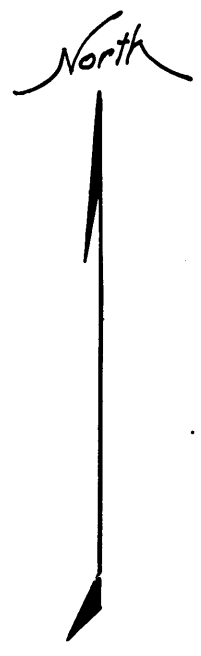
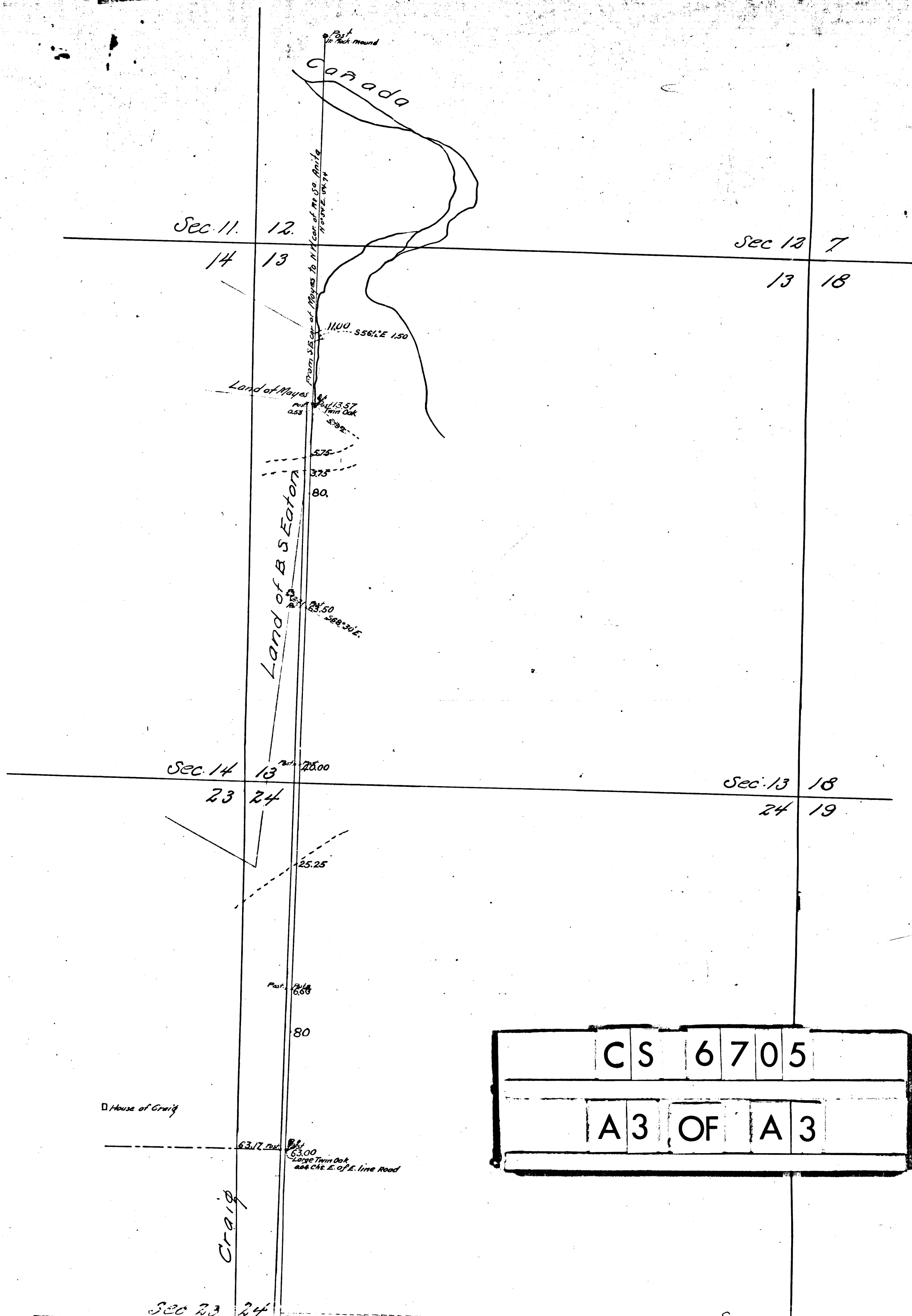
Scale 10 ch = 1 in.
 Frant Lecourreuf
 Co. Sur.
I.M. 49
 C.S. 6705
 Width of Road 50 ft

Filed July 5-1870
 Road Book 5-788
 R. 2-374
 Minute Book 4-144 Description in petition.
 " " 4-344 Road adopted.
 " " 4-349 Action revoked & petition denied.



C	S	6	7	0	5
A	2	OF	A	3	

T.I.N.A. 12. N.
 T.I.S.A. 12. N.



C	S	6	7	0	5
A	3	OF	A	3	

Sec. 11. 12.

Sec. 13 7

14 13

13 18

Sec. 14 13

Sec. 13 18

23 24

24 19

Sec. 23 24

Post to Rich mound

Canada

From S. E. corner of Meyers to N. E. corner of B. S. Eaton

Land of Meyers

Land of B S Eaton

House of Gray

Craig

Large Twin Oak and Ch. E. of E. line Road

CS 6705

A3 OF A3

1100.5561'E 150

113.57

575

375

80

28.00

25.25

24.6

600

80

63.00

63.00