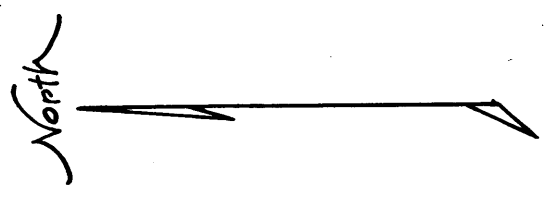




Wilmington Avenue

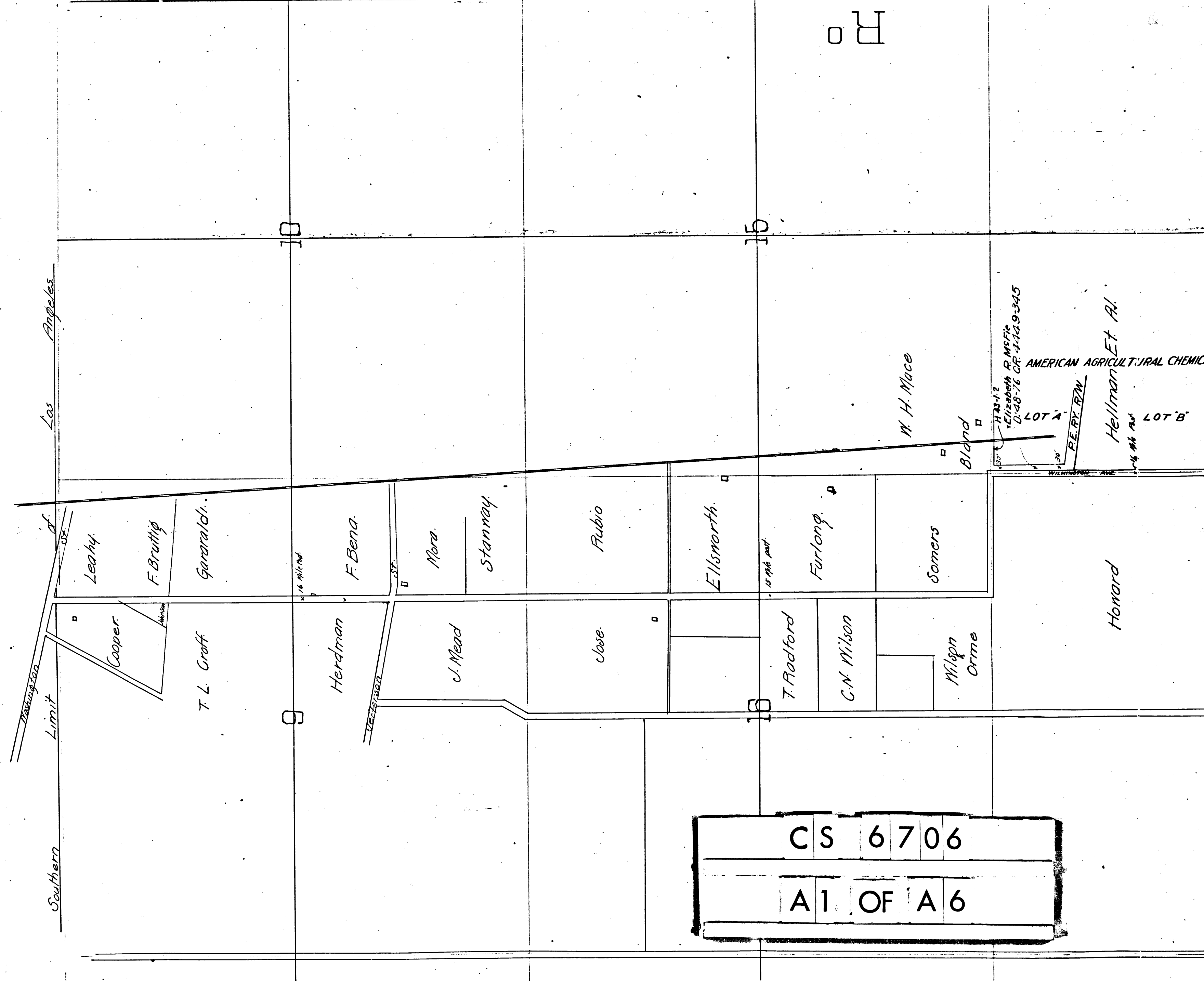
County Road

Scale 10 ch = 1 in. April 1876



Filed May 3 - 1876
Road Book 7 - 1, 2, 3, 4, 5
C. S. 6706

Sht. 7



CS 6706
A 1 OF A 6

SAN ANTONIO

H-23-12
HEIZENBACH R. MEFFIE
D-4876 CR-4449-345
AMERICAN AGRICULTURAL CHEMICAL CO TRACT
Hellman Et Al.
LOT A
PERRY B/W
LOT B
10 1/2 MILE ROAD

22

27

34

3

CORWIN

M Serrott

Florence

Elsalida

10 1/2 Mile Road

Francisco Alvarado

Shields

Gibson

12 Mile Road

Tansy

N Valenzuela

A Valenzuela

11 Mile Road

O Abila

Howard

M H Mace

D Turner

Nado

Mrs

J F

M V Silvia

J Valenzuela

J Abila

12 Mile Road

4 H Abila

21

28

33

J Milley

Durell

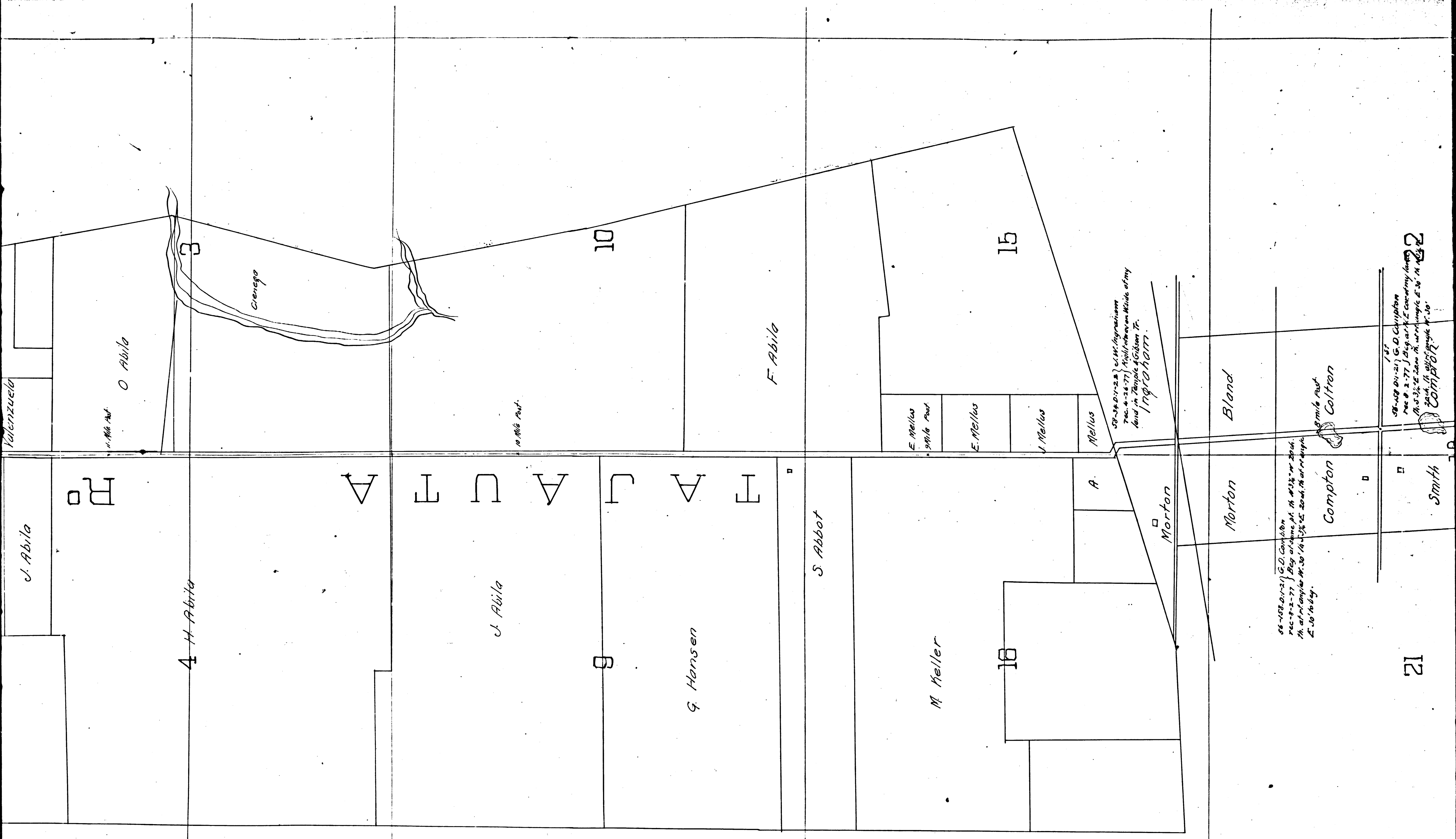
Mrs Tuff

F B Russell

Cleaver

CS 6706

A 2 OF A 6



Valenzuela

J. Abila

O. Abila

A. H. Abila

Cienega

J. Abila

G. Hansen

S. Abbot

M. Keller

F. Abila

E. Mellus
1/4 mile road

E. Mellus

J. Mellus

Mellus

58-34-01-22 } G. D. Ingraham
700-4-26-77 } Mill where an Mide of my
land in Temple & Gibson Tr.
Ingraham.

Morton

Morton

Bland

56-108-01-21 } G. D. Compton
700-8-2-77 } Beg. at same pt. as 512' x 204'
th. at Temple N. 30' W. 3/4' E. 204' th. at rt. angle
E. 30' to beg.

Compton

1/4 mile road
Coltron

Smith

58-108-01-21 } G. D. Compton
700-8-2-77 } Beg. at E. corner my land
th. S. 3/4' E. 200' th. at rt. angle E. 30' N. 103' 22'
700' }
204' th. at rt. angle N. 30'

21

22

C	S	6	7	0	6
A	3	OF	A	6	

3

10

15

22

4

9

18

21

SSA

F.M.
E-318204

DOMINGUEZ

MANUEL

D
E
F
G
H
O

CS 6706

A 5 OF A 6

0.116 acre

0.116 acre

0.116 acre

0.116 acre

0.116 acre

0.116 acre

R/kali

3

10

15

22

4

9

18

21

SSA

F.M.
E-318204

DOMINGUEZ

MANUEL

D
E
F
G
H
O

CS 6706

A 5 OF A 6

0.116 acre

0.116 acre

0.116 acre

0.116 acre

0.116 acre

R/kali



22

28

27

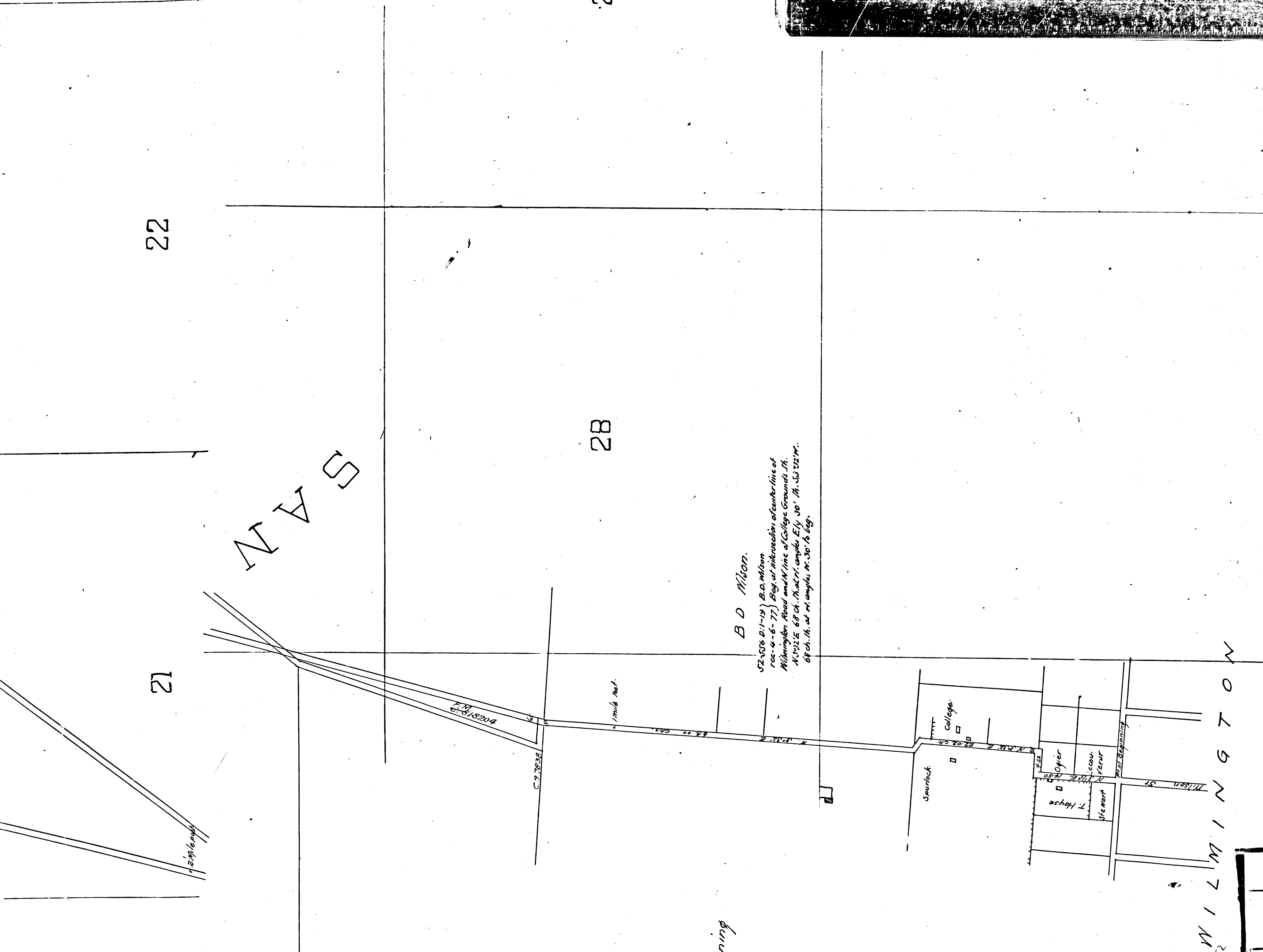
SAN

21

Banning

B D Wilson.

02-4378 D:1-19) B.D. Wilson
rec-4-6-77) Beg. at intersection of center line of
Wilmington Road and N line of College Grounds. N.
14°32'E 68 ch. Thence N. 30° 14' 53" E 22' W.
68 ch. th. at rt. angle N. 30° 16' 6" beg.



W I L M I N G T O N

CS 6706

A 6 OF A 6