

WASHINGTON BLVD.

~~KING ROAD~~

Connecting the Lexington and Gallatin Co. Road
with the
Pico and Anaheim Co. Road

Road Book 10 Page 7

L.M. 37
C.S. 6718

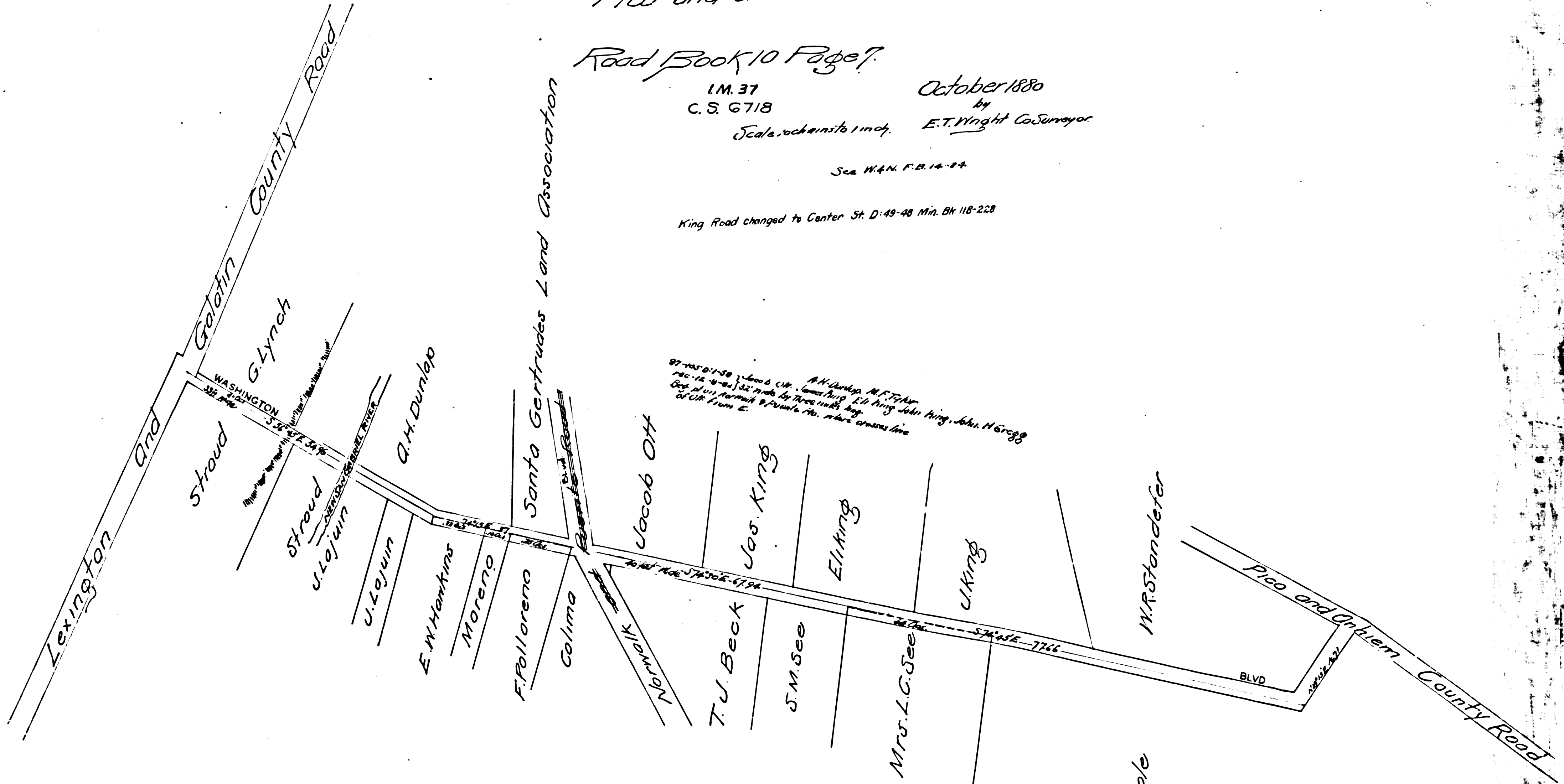
October 1880

Scale, each inch to 1 mile.

by
E.T. Wright Co. Surveyor

See W.A.N. F.B. 14-84

King Road changed to Center St. D:49-48 Min. Bk 118-228



97-1050-1-50 June 6 1880
 rec-12-18-80 32' wide by three 1/2' deep
 of U.S. from E. A.H. Dunlop, M.F. Taylor
 James King, Eli King, John King, John H. Gregg

C. Cole

CS 6718