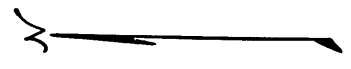


Showing Change in
Cahuenga Road

Road Book Pages 1387-14

C. 5. 6720
J. M. S

17 March 1876



10 7
11 13
12 18

11 12
14 13
15 18

Sec 10 11
15 14

LA BREA

WEED

DEWENS

WEED

JAMES

14 23

14 13
23 24

13 18
24 19

PLUMMER

G. B. SMITH

BROWN

HUNT

22 23
27 26

23 24
26 25

24 19
28 20

C I E N I G A

GARNIER

S. P. R. R.

G. SMIDT

C	S	6	7	2	0
A	1	O	F	A	3

Sec 27 26
34 35

25 26
35 36

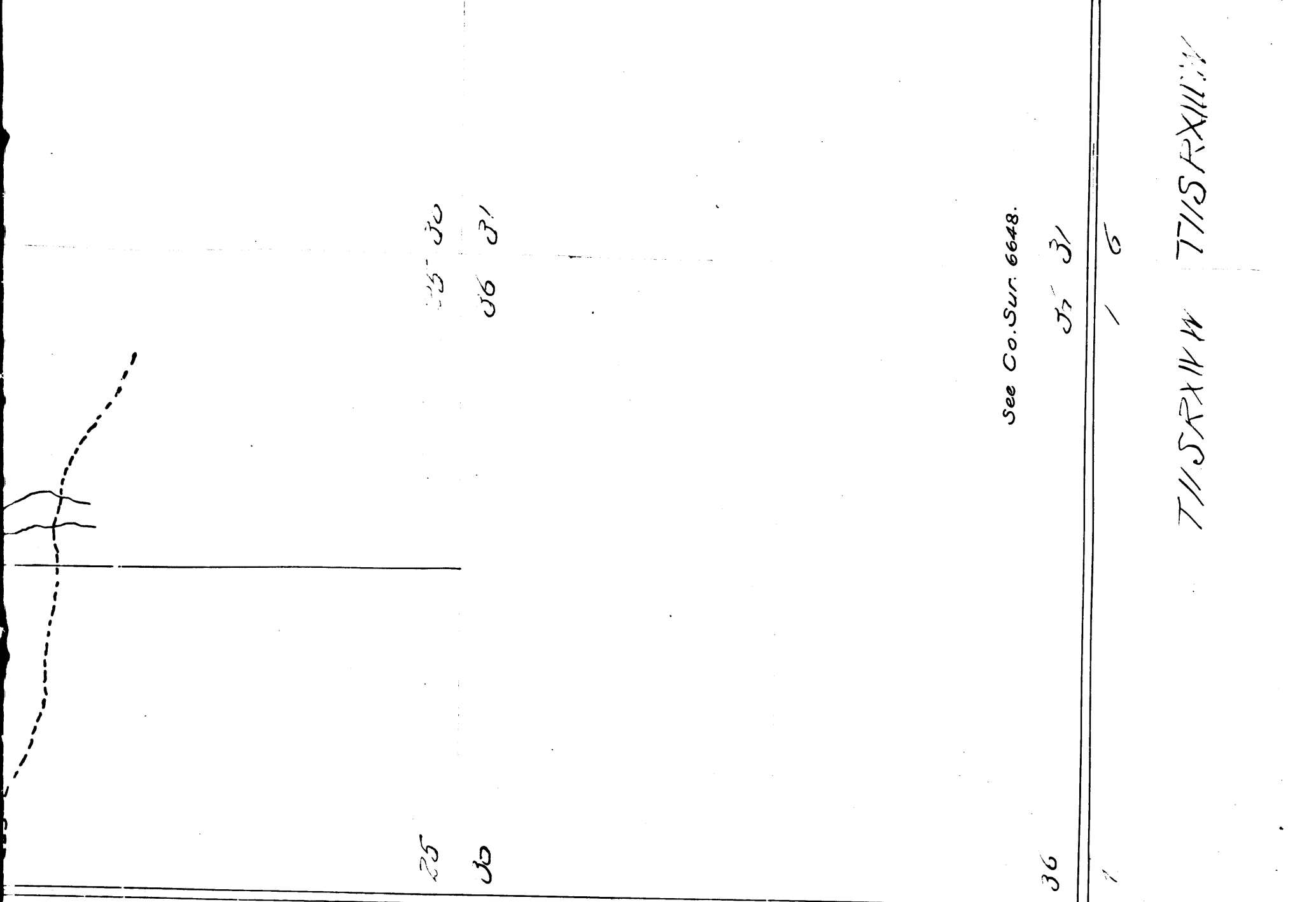
25 30
36 31

Limits
T I S R X I I I W

F. SMITH
28-321 D. 1-1-8 John James F. Schmitt
rec-4-10-74 Cam at pt of intersection of E&M
line bar Sec. 24, 30 with W line of C&P
th. To pt on division line bet N.M. & A.M.E. & Sec 24
60 Strip.

Los Angeles.

Los Angeles.



25 30
26 31

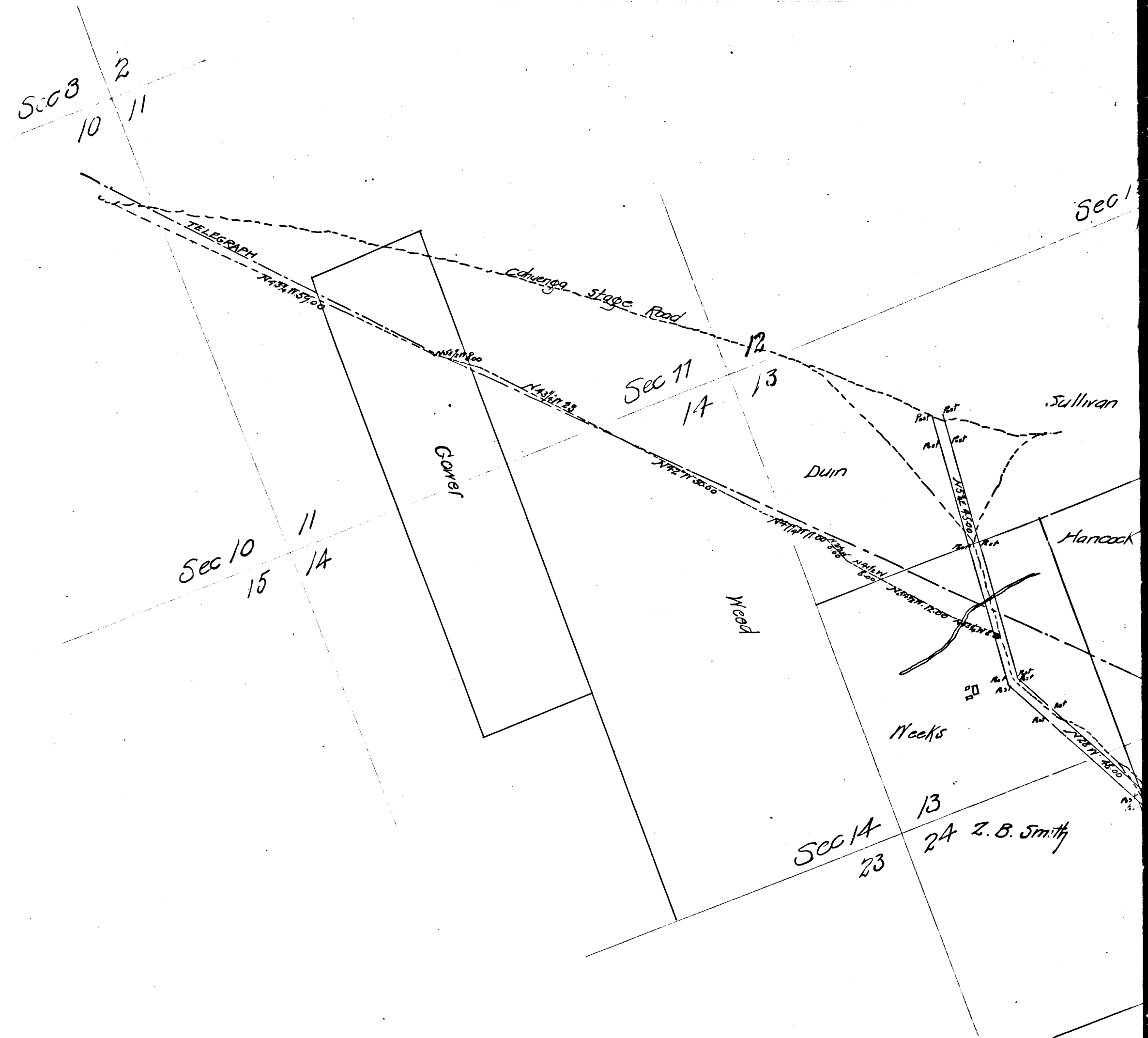
25 30
35 36

See Co. Sur. 6648.

TERRITORY THIRTYTHREE

Sec 27 26
34 35

Sec 34 35
4 3



Sec 8
10 11

Sec 10
11 14
15

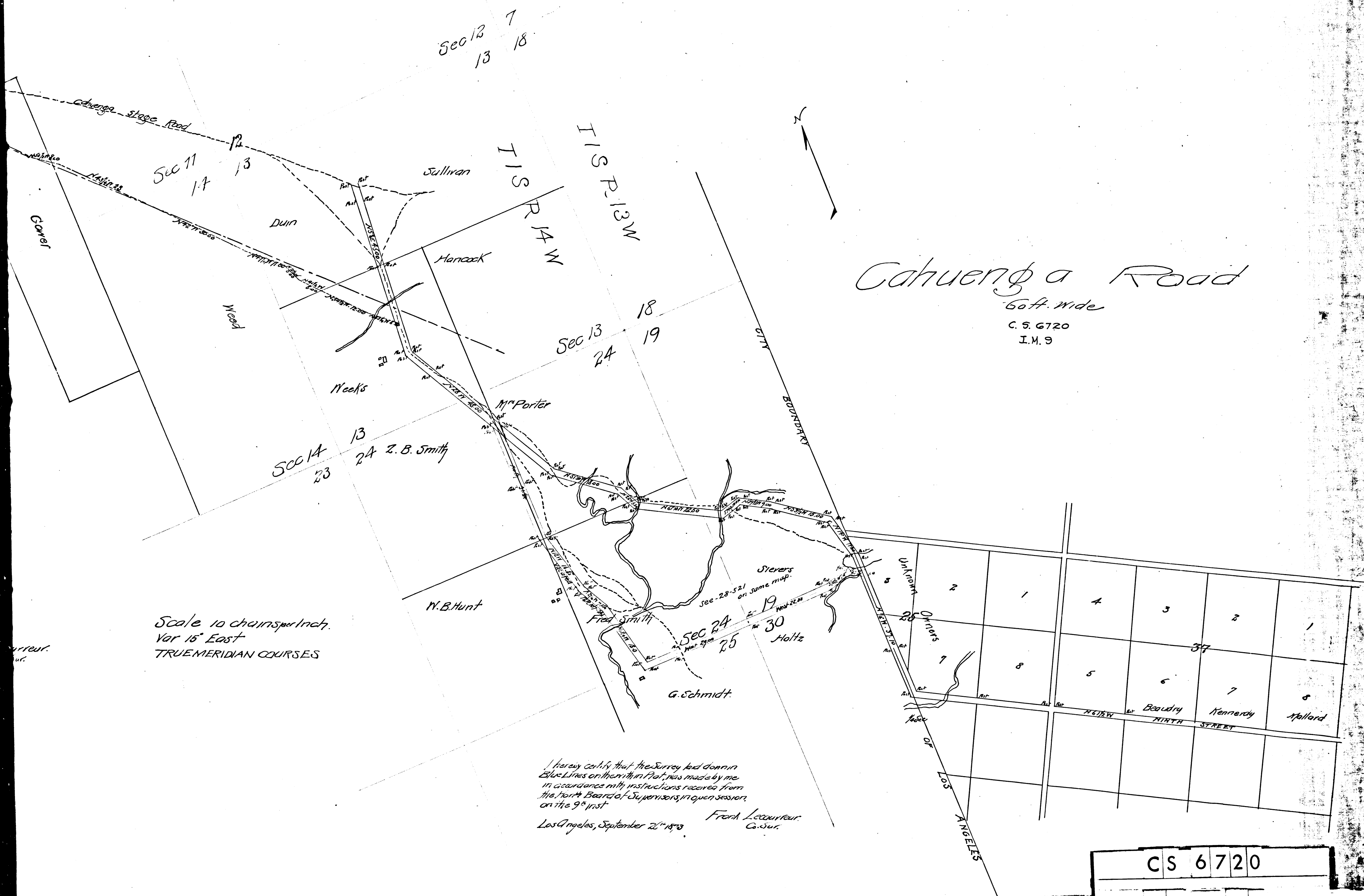
Sec 11
12 13
14

Sec 14
13 23
24 Z. B. Smith

July 16th 1873 Frank LeCourneur
Co. Sur.

Scale 10 chains per Inch.
Var 15° East
TRUE MERIDIAN COURSES

CS	6	7	2	0
A	2	OF	A	3



Cahuenga Road

60ft. wide
C. S. 6720
I.M. 9

Scale 10 chains per inch.
Var 15° East
TRUE MERIDIAN COURSES

I hereby certify that the Survey and Domain Blue Lines on the within Plat, was made by me in accordance with instructions received from the Board of Supervisors, in open session, on the 9th inst.
Los Angeles, September 20th 1873
Frank Lacourneur
C. S. 6720

CS	6720
A3	OF A3