

Part through Section 19  
 — Surveyed by —  
 Jos. H. Smith, County Sur.  
 April 25<sup>th</sup> 1900  
 F.B. 21 page 44

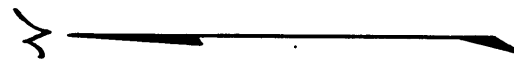
1	2	3	4	5	6	7	8	9	S	C
A	1	OF	A	5						

Proposed Change

by

March 21, 23

I. M. 264-137, 264



115.00

A. A. FREW

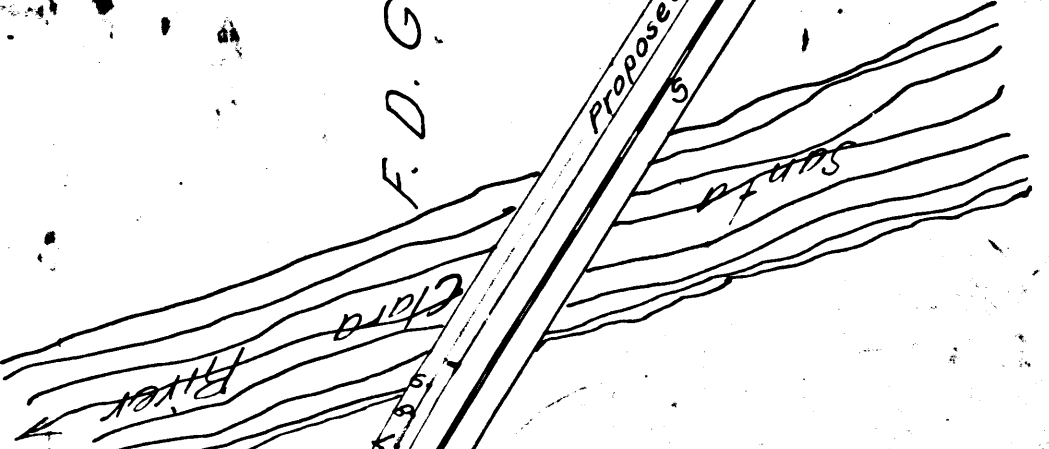
F. M. ERWIN

F. D. GILBERT

W. M. ERWIN

Sec 20

C	S	6	7	31
A	2	OF	A	5



38.68 ch

County

East

Declared Public Highway July 16, 1900 - Road

RS 6-123 D:27-194

Survey of 1907-18-29 (50' along R.R. & R.O. as per map.

387-170 D:233 (Hornet Turnwall.

being Survey of

Change in the Soledad Road

by Harry F. Stafford  
Co. Sur.  
March 21, 23, 23, 1889 Scale 50 ft = 1 in.

Filed April 15, 1889

Road Book 1-516.

C. S. 6731  
R 4-28

M. 264-137, 264-157, 249-137

Lines in brown show changes made by  
Jos. H. Smith Co. Sur.  
April, 1900  
F.B. 21-44

Declared a public highway July 16, 1900 R.B. 6-123 D: 27-194

T. 4. N. R. 15. N.

A	3	OF	A	5
C	S	6	7	3
1	1	7	3	6

MRS. HATTIE FARNIVALL

587-170 D: 233 (Hornell Farnivall)  
182-7-18-89 (50' along R.O.W. & R.C.  
as per map.

being Survey of April 1900

MRS. MAGGIE SMITH

Sec. 21

FRANK SMITH  
F. Smith and Jno M. Smith signed petition for  
change of road - February 19, 1889  
Road Viewers report that Frank Smith consents to  
give Right of Way  
Magie Smith, Jackson B. Smith and Frank F. Smith  
sign Consent to give Right of Way on Soledad Road  
Date etc. form off of this paper in Supervisors File  
April 25-1916 from Road Papers No 246  
County Surveyor.

D: 27-194  
R.B. 6-123

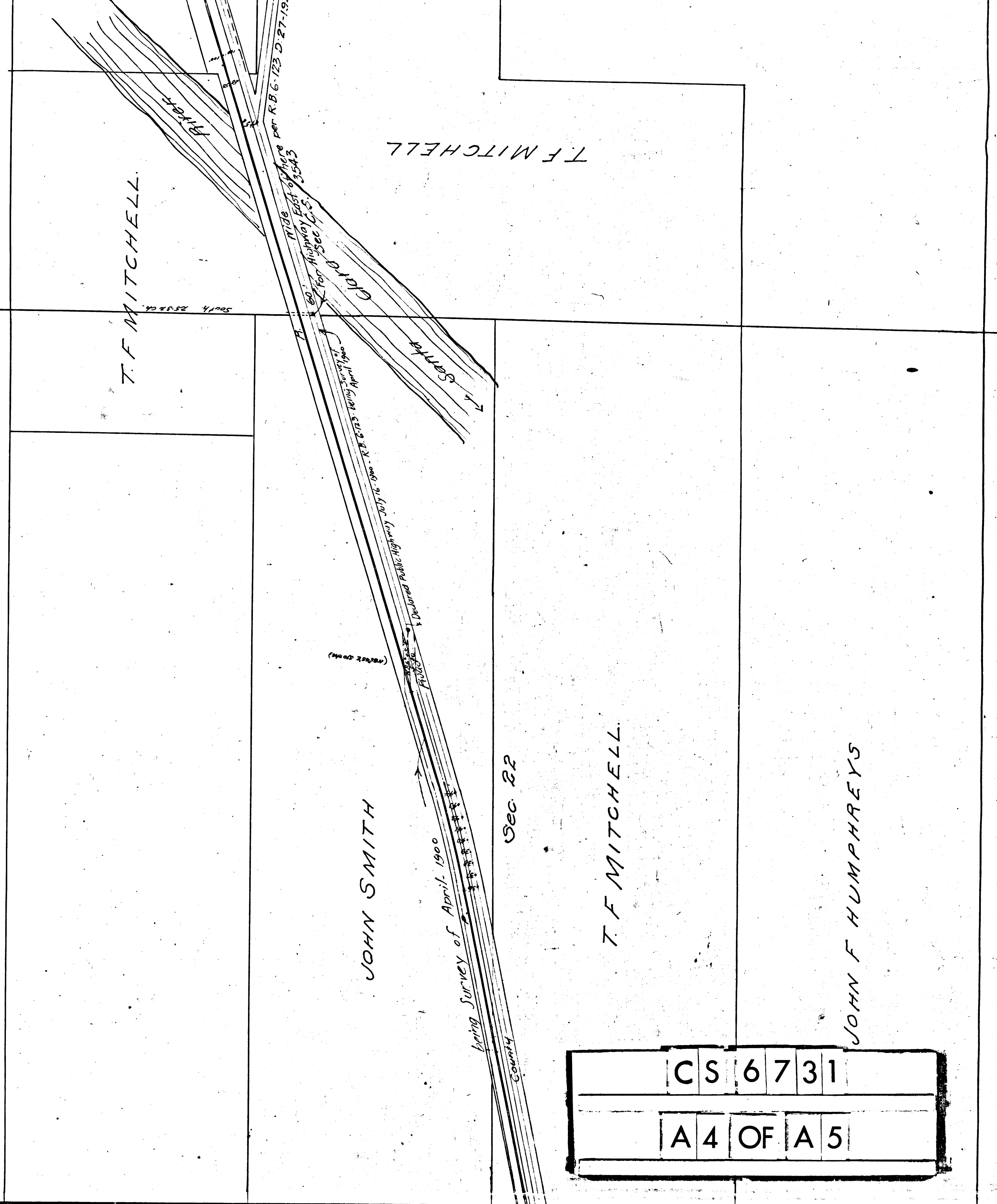
July 16, 1900

Declared Public Highway (along Brown Line) Proposed

60' Wide

WM. PATTERSON

Sta	Bearing	Dist.	Sta	Bearing	Dist.
1	S. 66°25'E	100 Ch.	38	N. 75°46'E	1.00 Ch.
2	S. 65°35'E	100	39	N. 77°10'E	1.00
3	S. 64°25'E	100	40	N. 76°30'E	1.00
4	S. 63°20'E	100	41	N. 75°15'E	1.00
5	S. 62°15'E	100	42	N. 74°00'E	1.00
6	S. 61°20'E	100	43	N. 72°50'E	1.00
7	S. 60°25'E	100	44	N. 71°50'E	2.00
8	S. 59°40'E	100	45	N. 71°30'E	2.00
9	S. 58°55'E	68.00 Chs	46	N. 70°30'E	2.00
10	S. 58°15'E	100 Ch.	47	N. 69°15'E	2.00
11	S. 57°30'E	100	48	N. 67°50'E	2.00
12	S. 56°45'E	100	49	N. 66°40'E	2.00
13	S. 55°50'E	100	50	N. 65°15'E	2.00
14	S. 55°00'E	100	51	N. 64°15'E	2.00
15	S. 54°10'E	100	52	N. 63°00'E	2.00
16	S. 53°20'E	100	53	N. 61°40'E	2.00
17	S. 52°30'E	100	54	N. 60°40'E	2.00
18	S. 51°40'E	100	55	N. 59°15'E	1.23
19	S. 50°55'E	100			
20	S. 50°15'E	100			
21	S. 49°35'E	100			
22	S. 48°55'E	100			
23	S. 48°15'E	100			
24	S. 47°35'E	100			
25	S. 46°55'E	100	44	N. 73°00'E	57.69 Chs
26	S. 46°15'E	100	45	S. 63°40'E	18.35
27	S. 45°35'E	100	46	N. 72°40'E	6.26
28	S. 44°55'E	100	47	N. 72°20'E	8.40
29	S. 44°15'E	100	48	N. 71°50'E	6.35
30	S. 43°35'E	100	49	N. 71°30'E	2.00
31	S. 42°55'E	100	50	N. 70°30'E	2.00
32	S. 42°15'E	100	51	N. 69°15'E	1.75
33	S. 41°35'E	100	52	N. 68°00'E	1.77
34	S. 40°55'E	100	53	N. 66°40'E	2.50
35	S. 40°15'E	93.00	54	N. 65°15'E	3.68
36	S. 39°35'E	100 Ch.	55	N. 64°15'E	1.23
37	N. 77°40'E	100			



CS 6731  
A 4 OF A 5

JOHN F HUMPHREYS

Sec. 14

J. E. YOUNGBLOOD

Sec. 23

J. E. YOUNGBLOOD.

T. F. MITCHELL.

T. F. MITCHELL

C	S	6	7	3	1
A	5	OF	A	5	

