

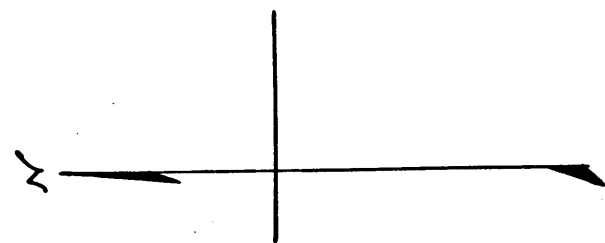
Santa Fe Avenue Extension

Feb. 14 & 15 1889. by Harry F. Stafford
County Surveyor.

Scale: 5 Chs to Inch

Sec. Res. Sur. 4-13 I.M. 7

Road Book 1-14



0 11
15 14

9 10
16 15

Star Tract

M^r Koon
Agent

Mrs. M. Furlong

M. L. Wicks.
Agent.

Dr. H. Nadeau.

L. Morse

John Ross.

L. Morse
Trustee.

583-238 D:1-232 } Diego Lopez.
rec. 7-6-89 } 30 Strip off east end of
my land on Santa Fe Ex.
Diego Lopez

Mrs. Greeley

J. H. Brenner

M. R. Huff

584:157 D:7-203 } B. Toumey
rec. 7-10-89 } 30 Strip off my land
fronting on Santa Fe Trolley Extension
6.16 ch. long.

John Moore

P. D. Bell

A. Lott

12.76

5.05

5.03

10.06

7.18

2.97

10.02
D: 5650-231
D: 3-155

12.48

6.16

11.36

5.00

5.00

20.20

20.36

South Var 15° E 51.14

South Var 14° 15' E 81.06

34.59

7.93

5.98

2.64

4.50

8.14

5.04

4.91

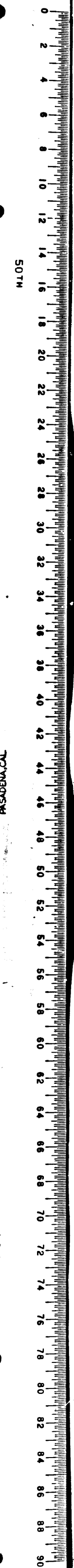
58.47

M 105

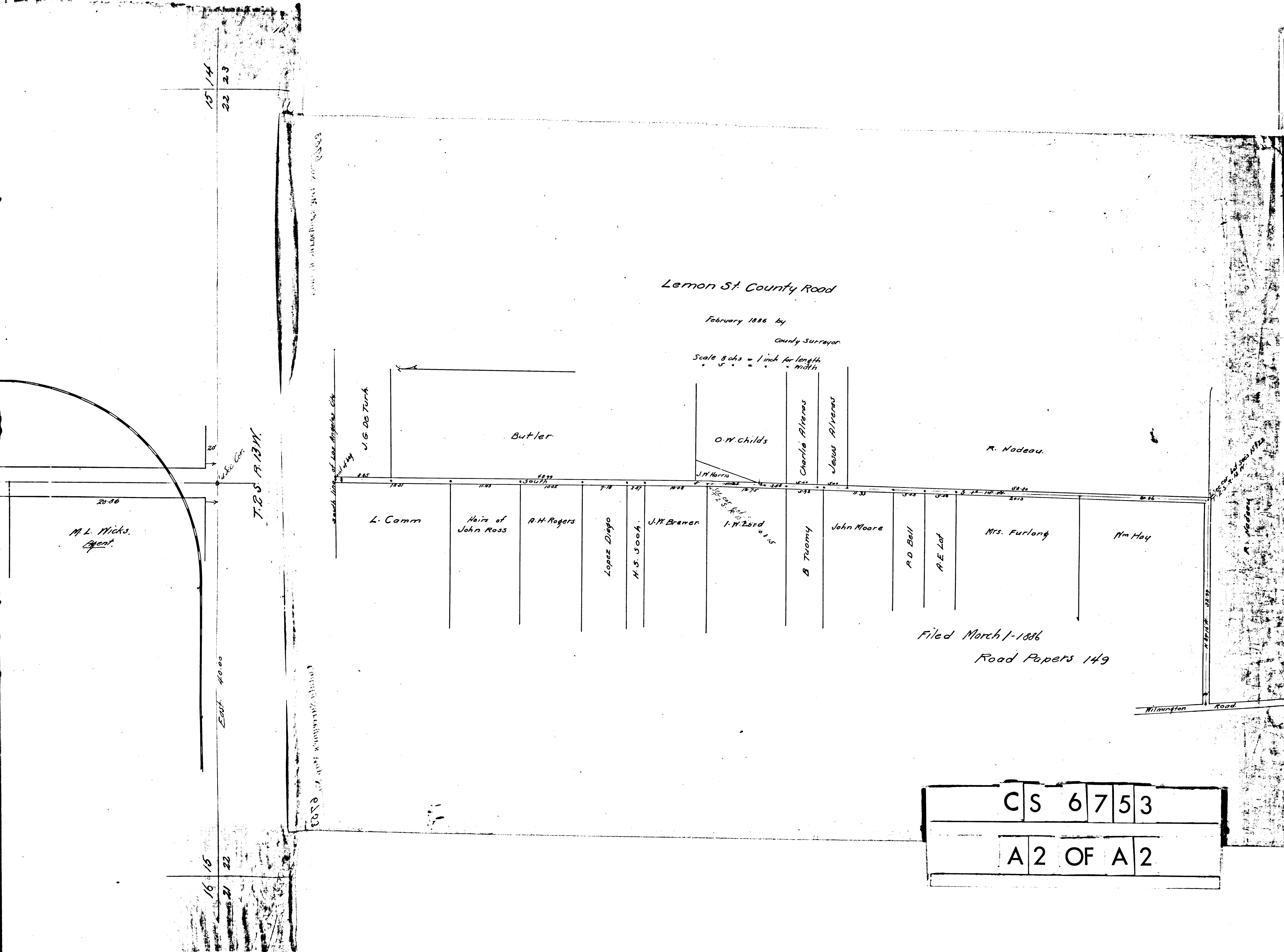
VENCO
PASADENA, CALIF.

9 57

10TH



C	S	6	7	5	3
A	1	OF	A	2	



Lemon St. County Road

February 1886 by
County Surveyor
Scale 8 chs = 1 inch for length
width

Filed March 1-1886
Road Papers 149

C	S	6	7	5	3
A	2	OF	A	2	

