

Morton Road  
as made Nov 1882 by E.T. Wright  
Co. Sur.

Scale 1 inch = 1/4 mile  
C. S. 6756

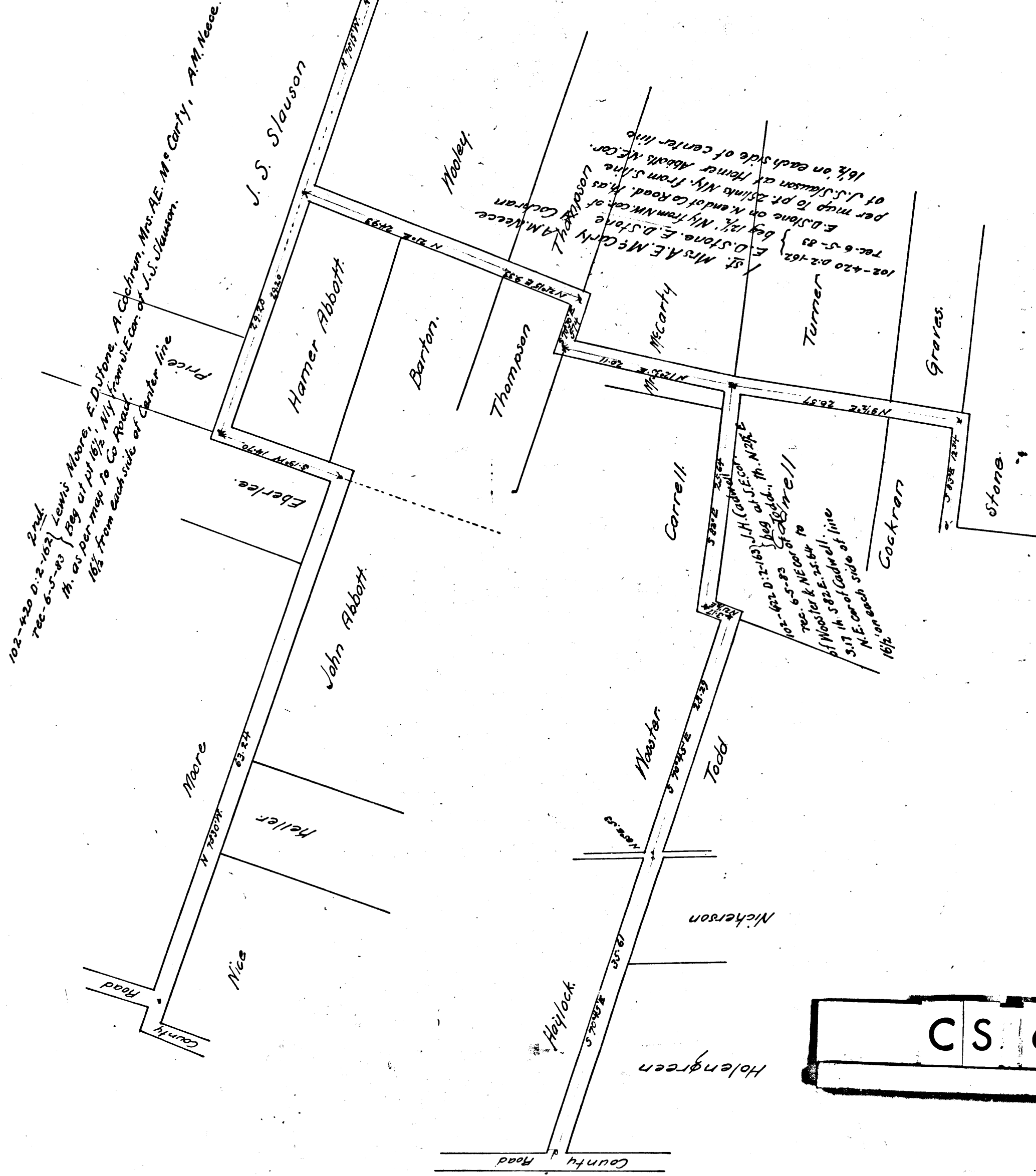
Filed Dec. 5-1882  
J.M.32 Road Book. 2-13.

Morton Road established - D: 13-30-89

See C.S. 7708-5th. 5.

C.S. 8484

C.S. B-120-7-6



CS 6756