

FLORENCE AVE.
~~Santa Gertrudes Road No 2~~
 from Town of Gallatin to the Annahiem stage Road
 Surveyed Nov. 1871 - Frank Lecouvreur - County Surveyor

COUNTY SURVEYORS MAP NO 6758

Scale: 10 ch = 1 in.

See R 2-436, Road Book 6-3

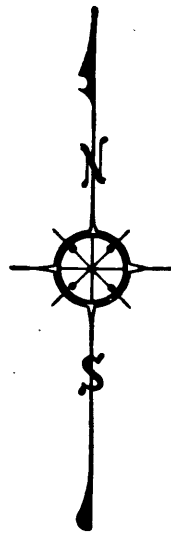
I. M. 33

Declared public highway - D: 19-185, Minute Book 5-119
 Por. Santa Gertrudes Road No. 2 changed to Little Lake Road - D: 13-42
 Por. of Little Lake Road vacated - D: 12-190
 Por. Santa Gertrudes Road No 2 change to Easy Street - D: 13-84
 Easy Street changed to Florence Ave. - D: 49-268, Minute Book 222-361.

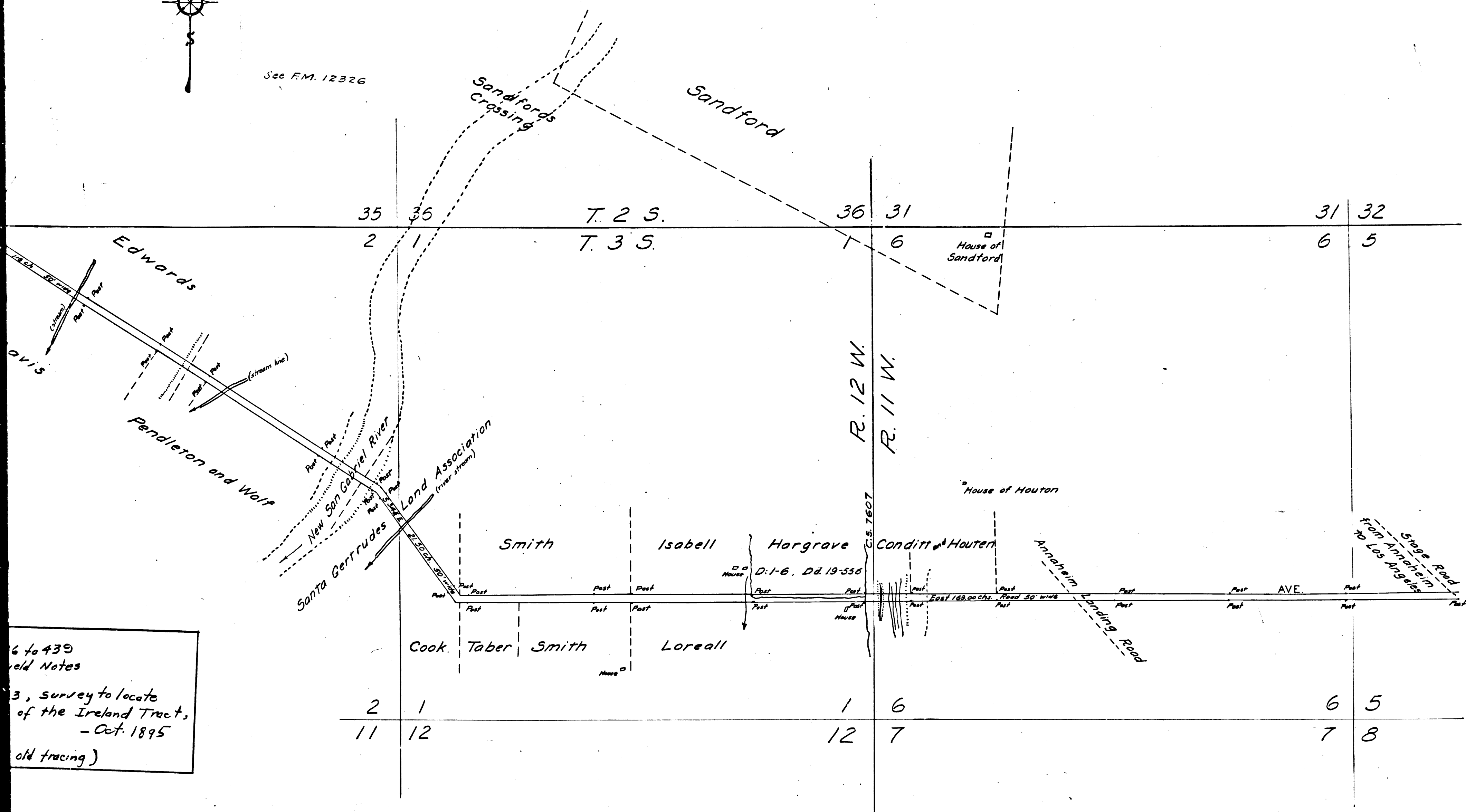
"R" BK. 2-436 to 439
 Nov. 1871 Field Notes
 Road BK. 6-3, survey to locate
 the NE corner of the Ireland Tract,
 - Oct. 1895
 (Pencil on the old tracing)

CS 6758
 A1 OF A2

Retraced by A. Sue - June - 1959
 Checked by R.J. Black



See F.M. 12326



6 to 439
old Notes
3, survey to locate
of the Ireland Tract,
- Oct. 1895
(old tracing)

June - 1959
ck

CS 6758
A2 OF A2