

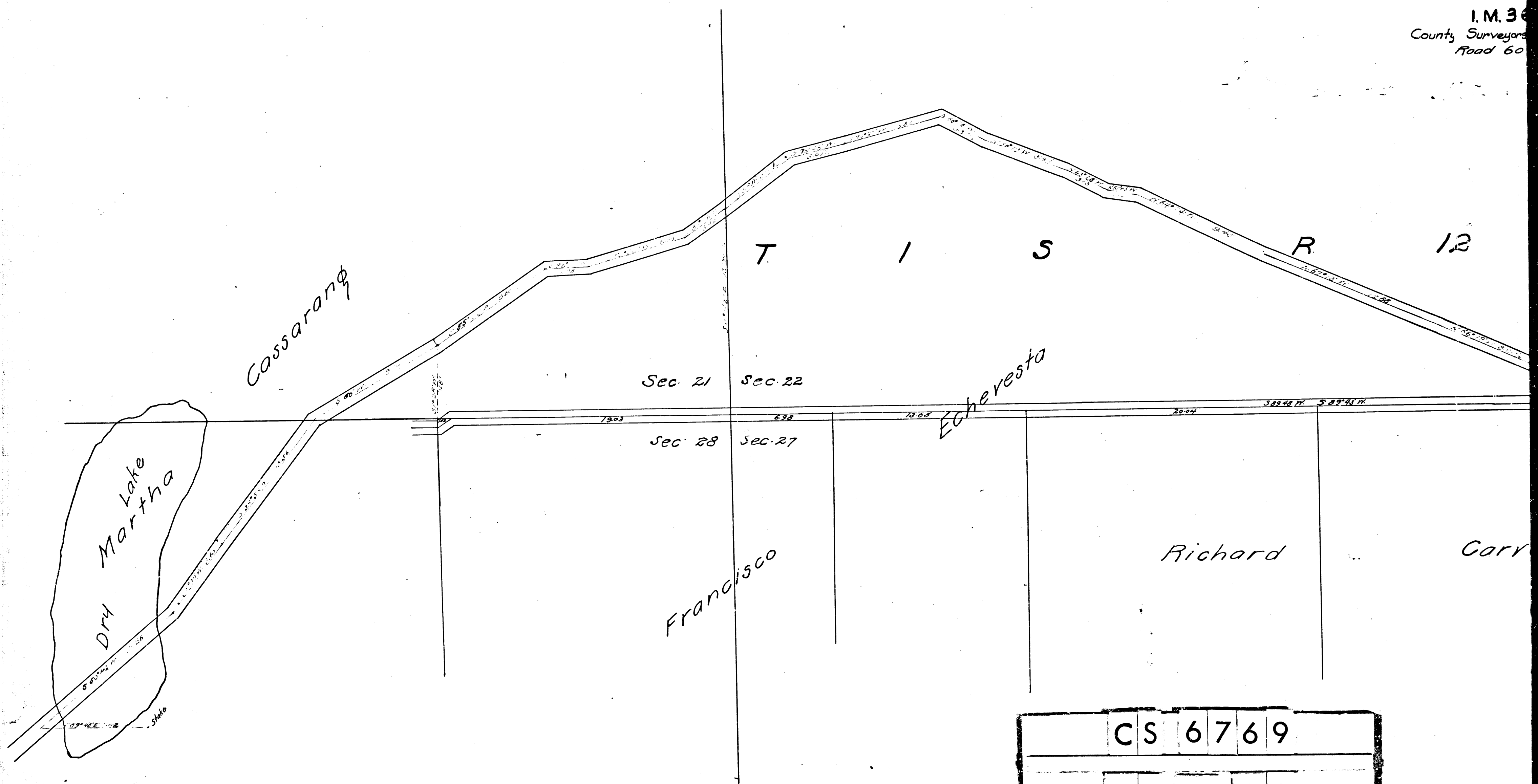
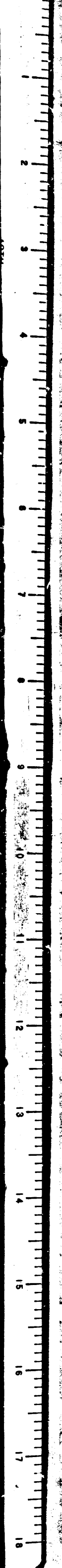
Portion of
Old Monterey

April 1892

Scale 4 ch =

I.M. 30

County Surveyors
Road 60



CS	6	7	6	9
A	1	OF	A	2

Portion of the
Old Monterey Pass Road

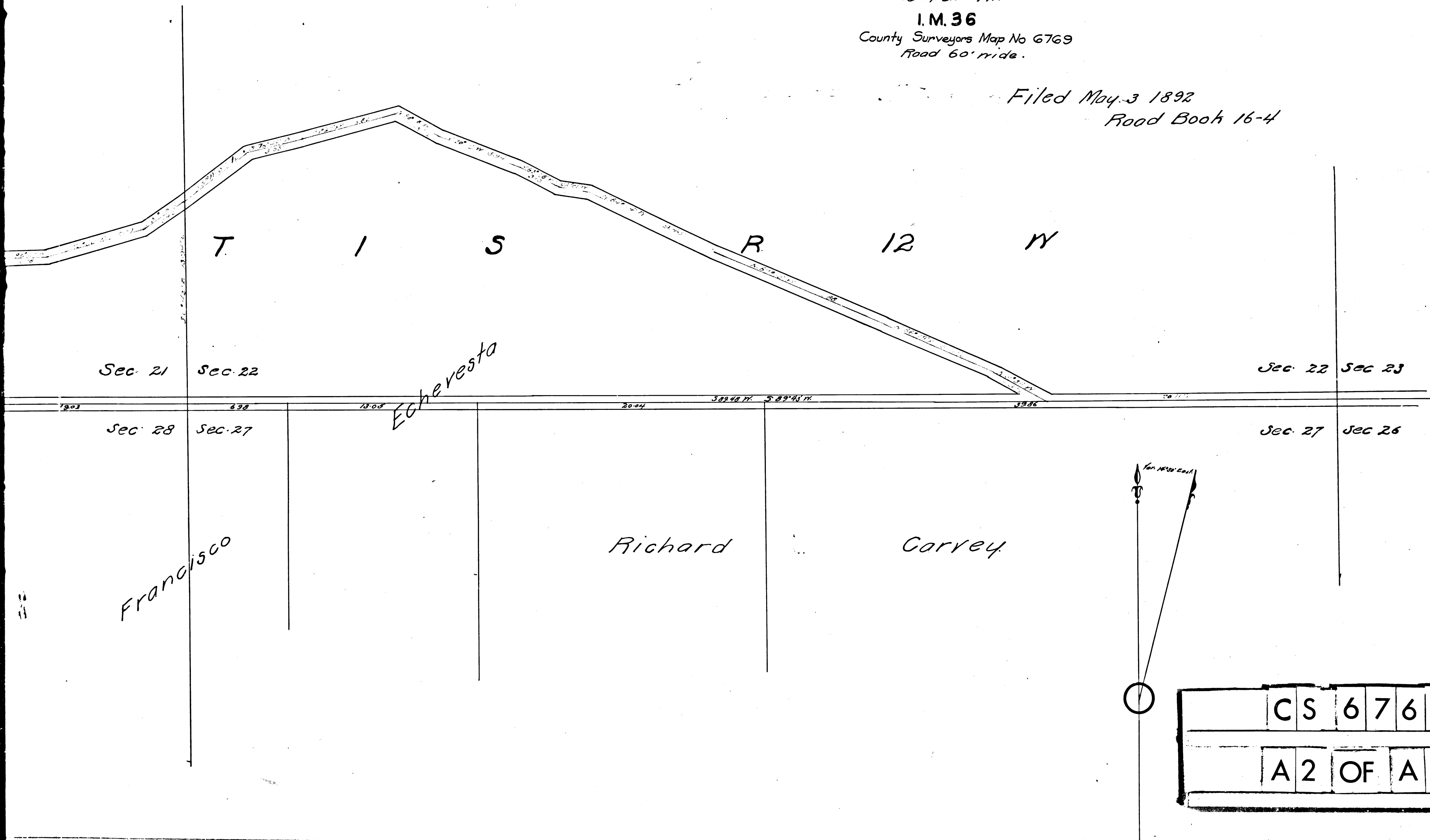
April 1892 by Harry F. Stafford.

Scale 4 ch = 1 in

I. M. 36

County Surveyors Map No 6769
Road 60' wide.

Filed May 3 1892
Road Book 16-4



CS	6	7	6	9
A	2	OF	A	2

H. D. S.

VEMCO
PUBLISHED

957

10TH