

Lenox

Blays

Stephenson

Meade

268 ch.

286 ch.

700

$\frac{14}{100} A$

$\frac{16}{100} A$

19.73

D:1-11

N 89° 35' E

20.09

S 81° 1' E

21.83 ch.

$\frac{6}{100} A$

9.36 ch.

10.15 ch.

$\frac{17}{100} A$

$\frac{6}{100} A$

S 80° 1' E

12.43 ch.

Ahe. Cass & Hampton.

J. S. Anderson.

Nolton.

Getchell

Darcy

Pirtle & March.

Central Avenue

North 29.42 ch.

North 26.09 ch.
Compton Avenue

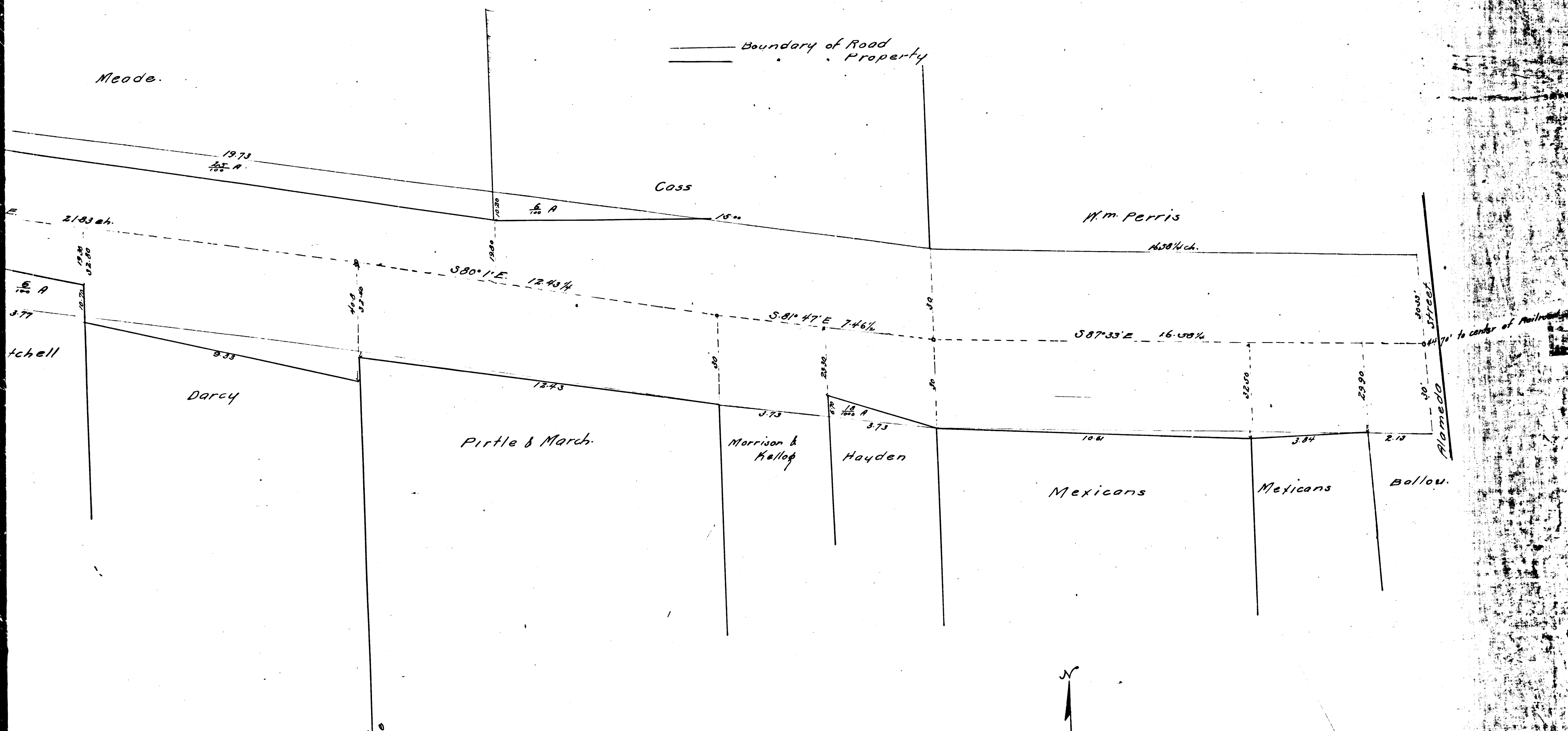
S.W. corner Section 9-T-25-R-137.
Stake & Stone.

CS	6779
A1	OF A2

~~Jeffer~~

Scaled length
... mdt

1/4 Sec. part
190



—— Boundary of Road
 - - - - Property

Meade.

Coss

W.M. Perris

Darcy

Pirtle & March.

Morrison & Kellogg

Hayden

Mexicans

Mexicans

Ballow.

4th ST. ST.

~~Jefferson Street Road~~

Aug 21. 1887 by Jno Goldworthy.

see Map in R. 3-201 Co. Sur.

County Surveyors Map No 6779

Sht. 7

Scale of length = 2ch to lin
 " " width = 20' = 1"

Road Book 13-3

CS	6779
A2	OF A2

1/4 Sec. part
 190

to center of Railroad