

Sheet 7

Compton Road No. 3

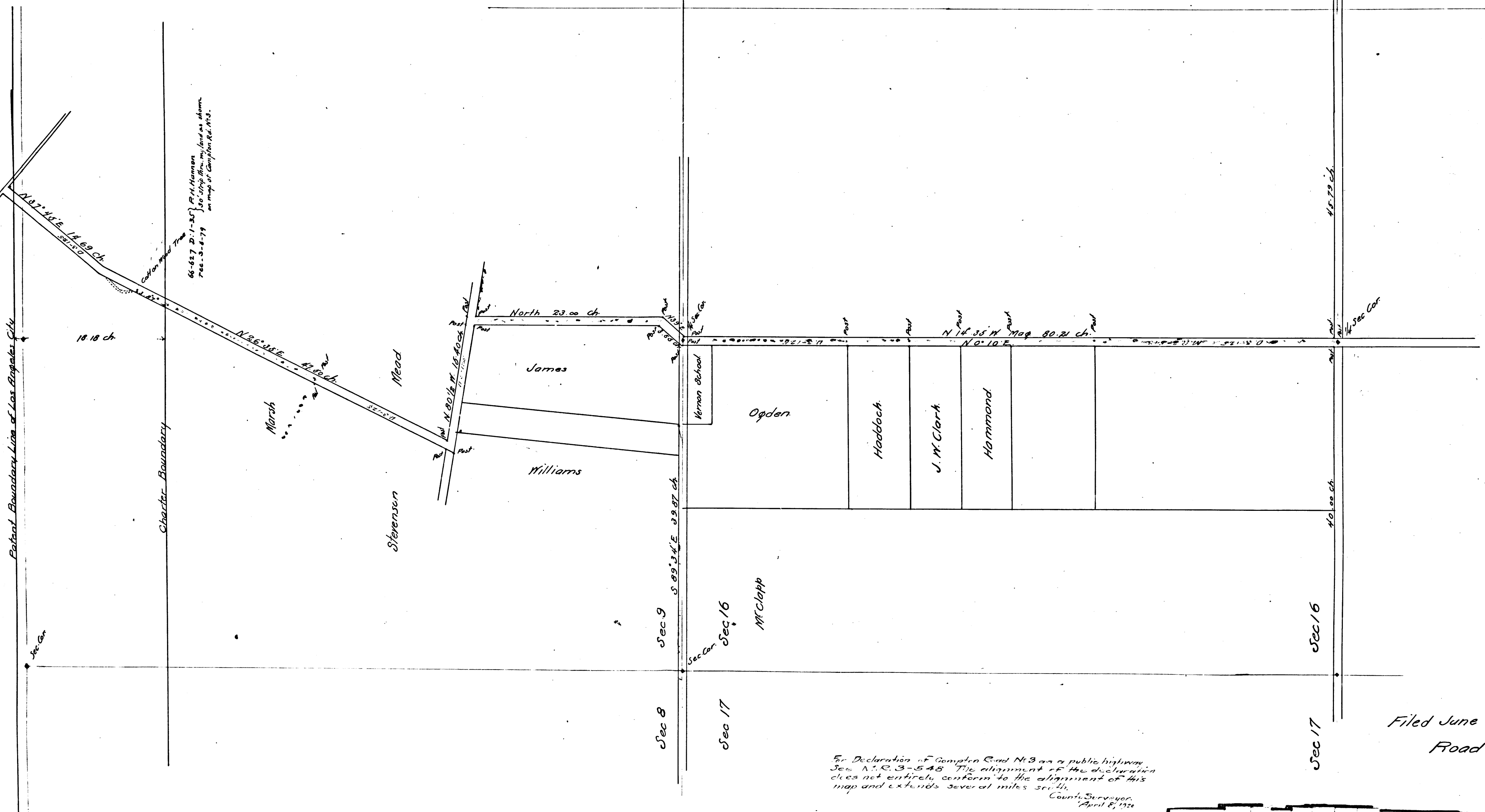
T. 2. S. R. 13. W.

County Surveyors Map No 6787

Scale 600' = 1" = 1/16"

May 1878

by Jno. E. Jackson
Co. Sur.



66-627 D. 1-35 } P.A. Hanson
 766.5-4-79 } 30 Strip from my land as shown
 on map of Compton Rd. 1878.

For Declaration of Compton Road No. 3 as a public highway,
 See N.E. 3-548. The alignment of the declaration
 does not entirely conform to the alignment of this
 map and extends several miles south.
 County Surveyor,
 April 8, 1926

Filed June 5 1878
 Road Book 11-9

CS 6787