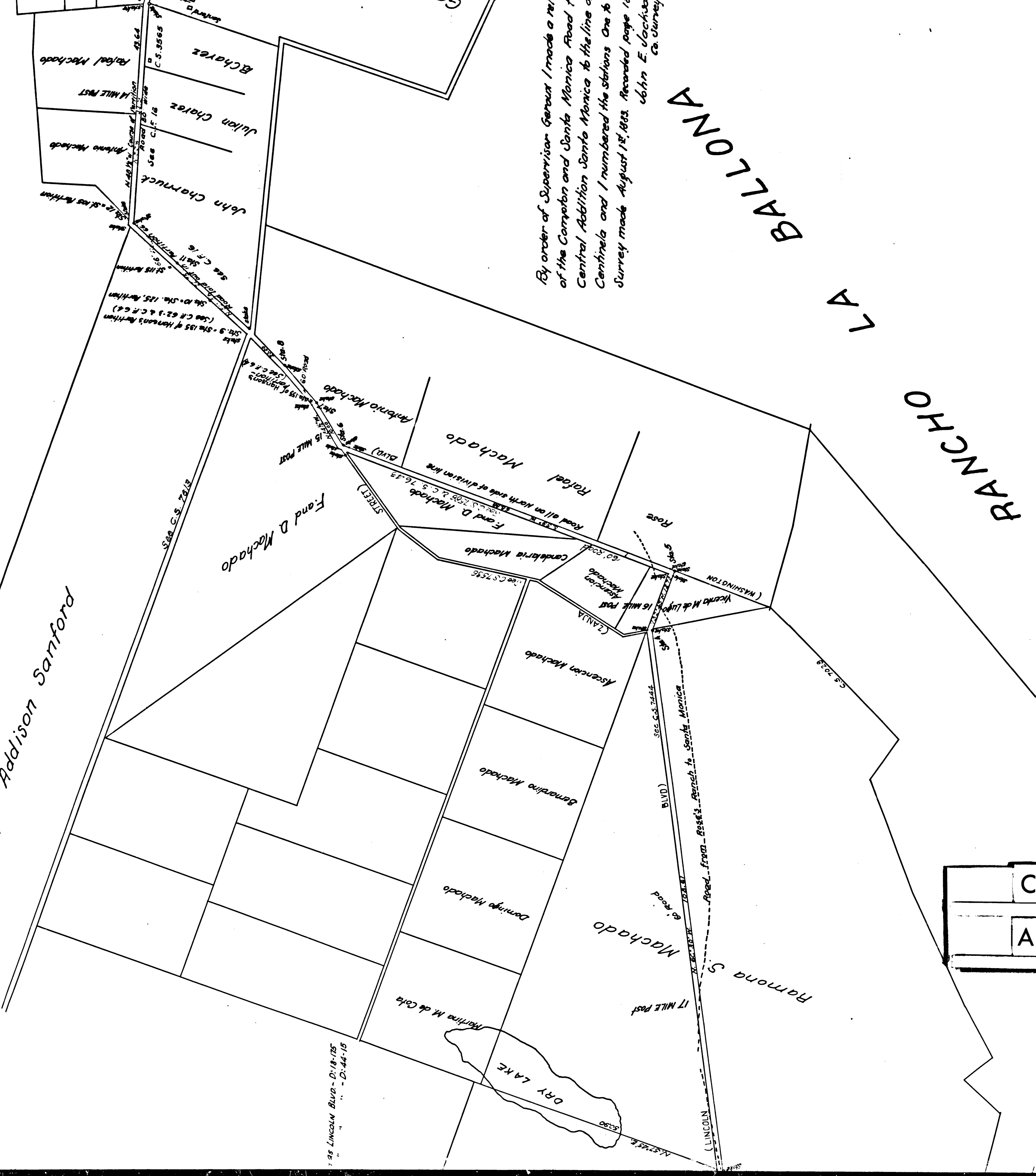


Part of Compton & Santa Monica RR established as WASHINGTON BLVD - D
 INGLEWOOD BLVD - D
 CULVER DRIVE - D
 MESMER AVE. - D
 CENTINELLA - D

George Addison Sanford



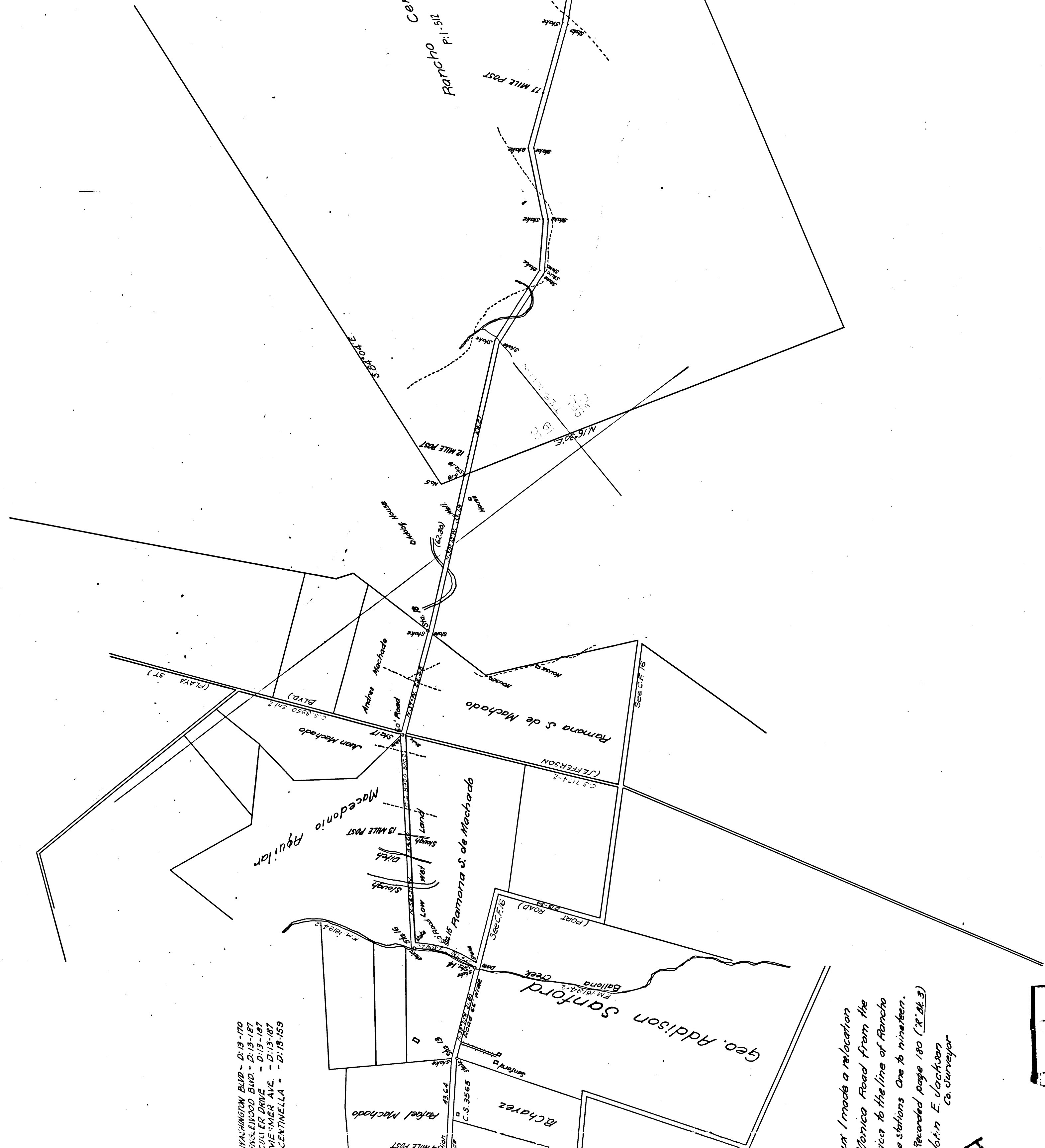
By order of Supervisor Gerout I made a re-
 of the Compton and Santa Monica Road
 Central Addition Santa Monica to the line of
 Centinella and I numbered the stations One to
 Surrey made August 1st, 1883. Recorded page 1
 John E. Uecker
 Co. Survey

RANCHO SANTA MONICA

RANCHO

CS	6795
A2	OF A7

125 LINCOLN BLVD - D-18-175
 " " " " - D-44-15



WASHINGTON BLVD. - D:13-170
 INGLEWOOD BLVD. - D:13-187
 CULLER DRIVE - D:13-187
 MESMER AVE. - D:13-187
 CENTINELLA - D:13-159

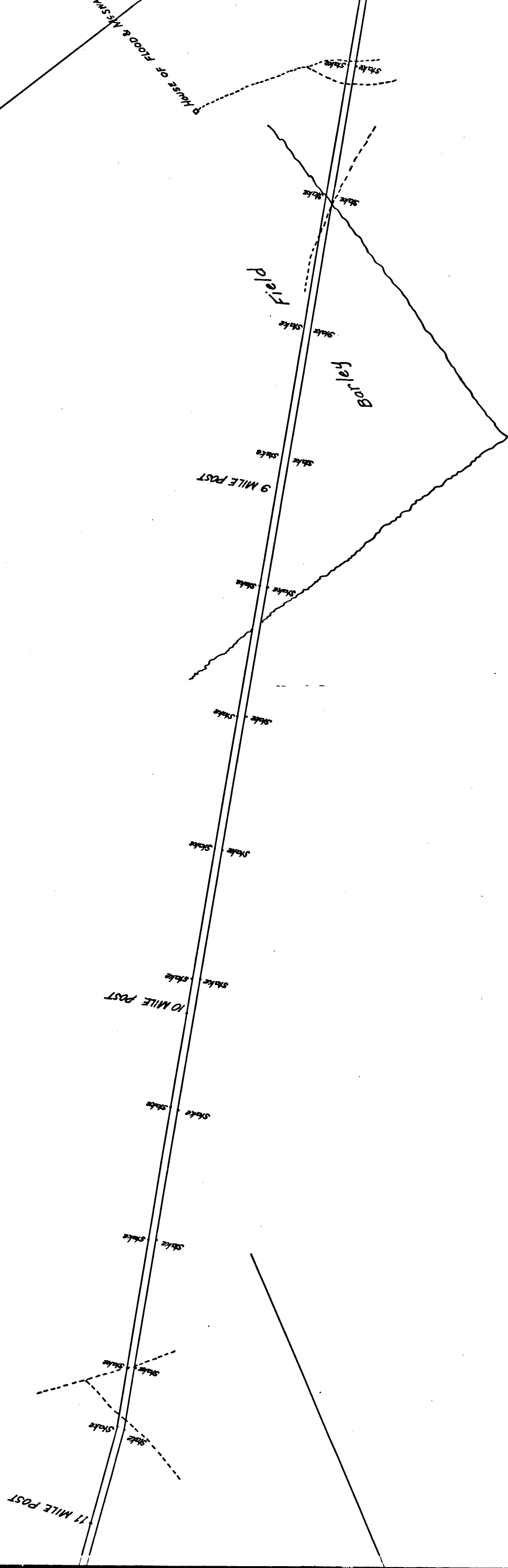
I made a relocation
 of the
 Sanford Road from the
 line to the line of Rancho
 stations One to nineteen.
 Recorded page 180 (R. 21. 3)
 John E. Clackman
 Co. Surveyor

CS	6795
A3	OF A7

Compton and Santa Monica Road declared a public highway by the Board of Supervisors, June 6th 1877 - Road Minute Book 1:pg 173, but did not define same. A pencil notation on page 174, "See J. E. Lee's" probably refers to the original of this map, filed with the Board on April 5, 1877 and there fore the declaration would probably mean the road as shown here on.

C. Surveyor
Jan 4-1916

Certinela
Rancho P. 1-512



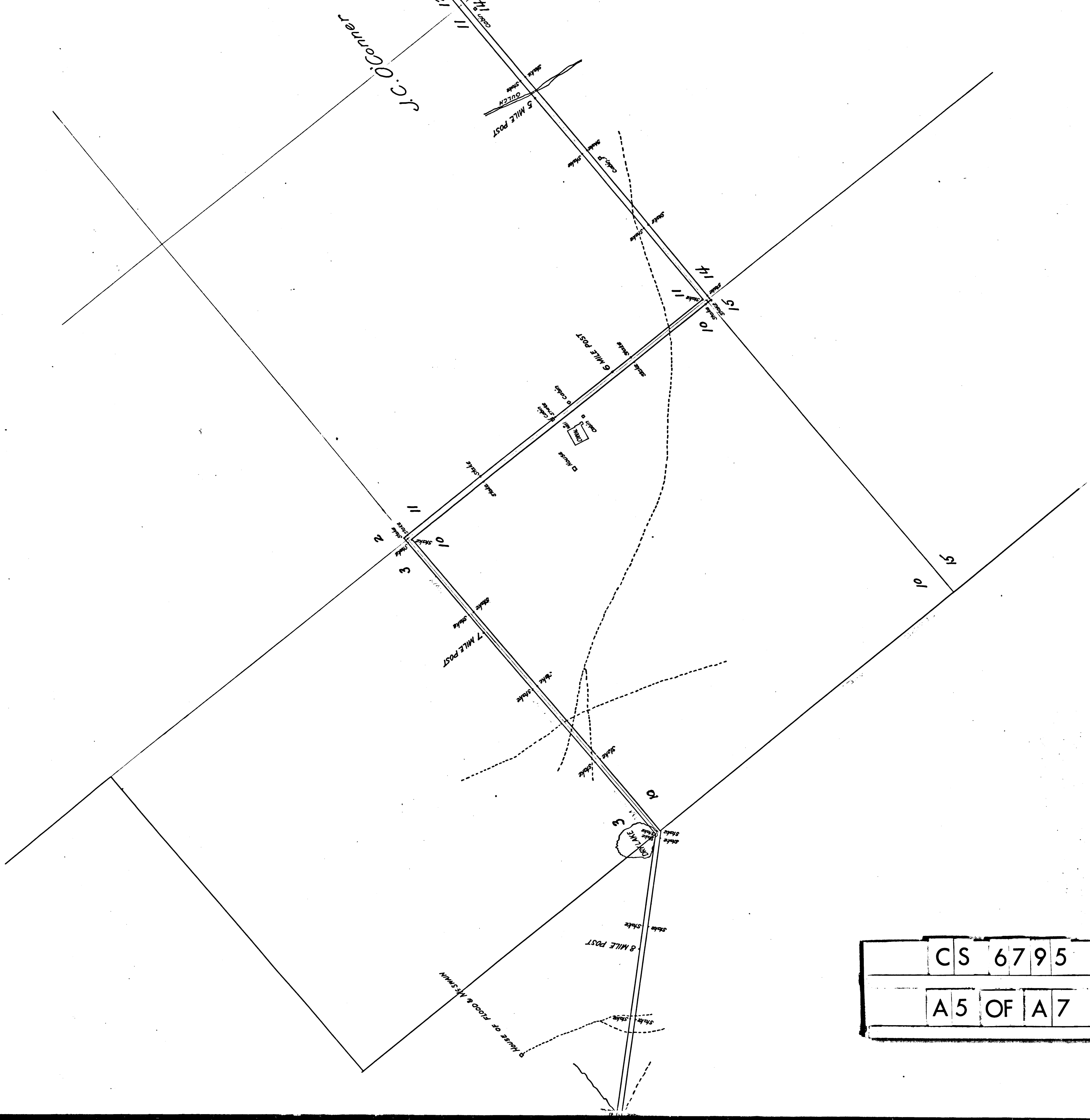
S. F. 2
REDONDO

TOWN

SALSAL

RANCHO

CS	6795
A4	OF A7

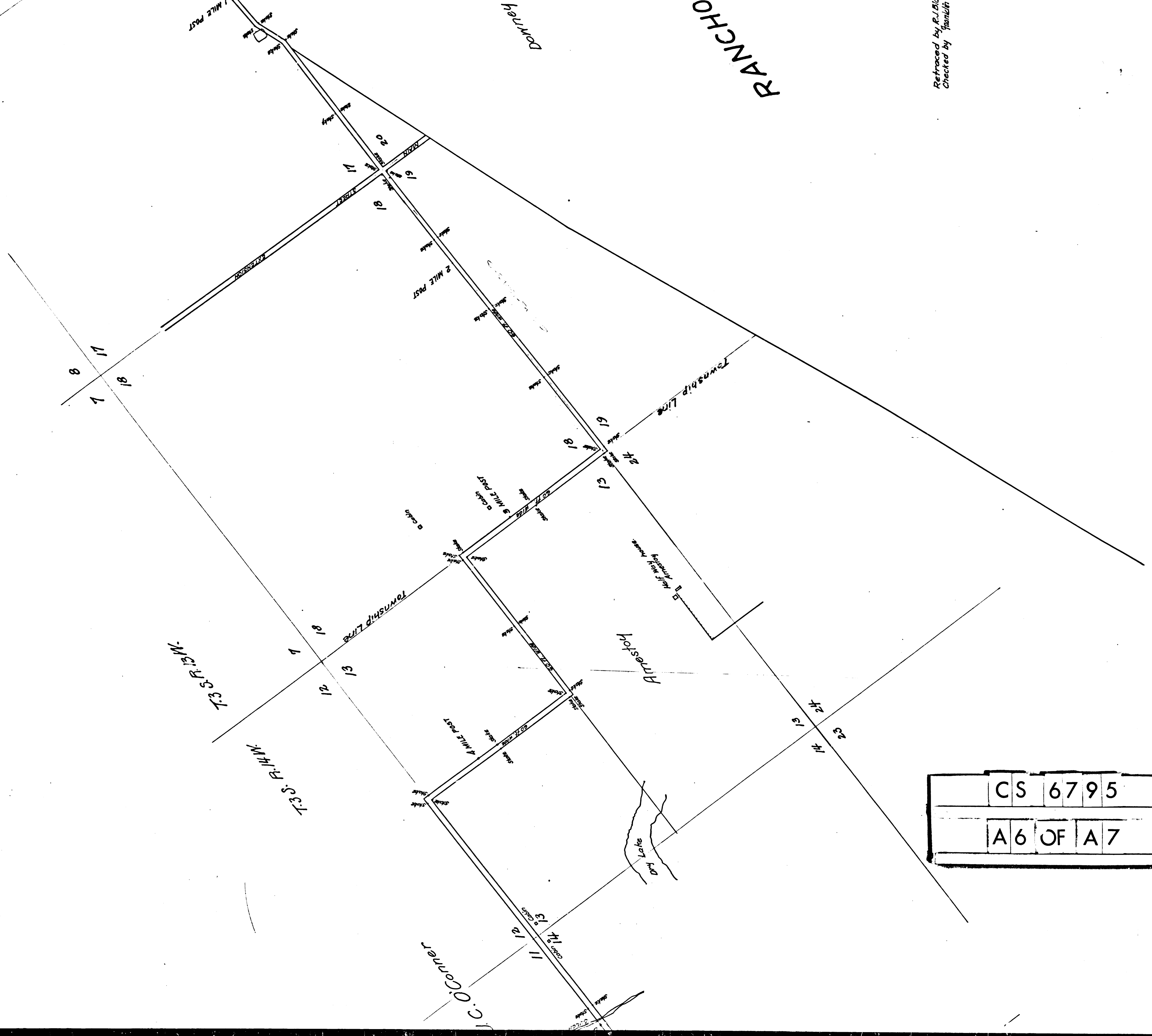


CS	6	7	9	5
A	5	OF	A	7

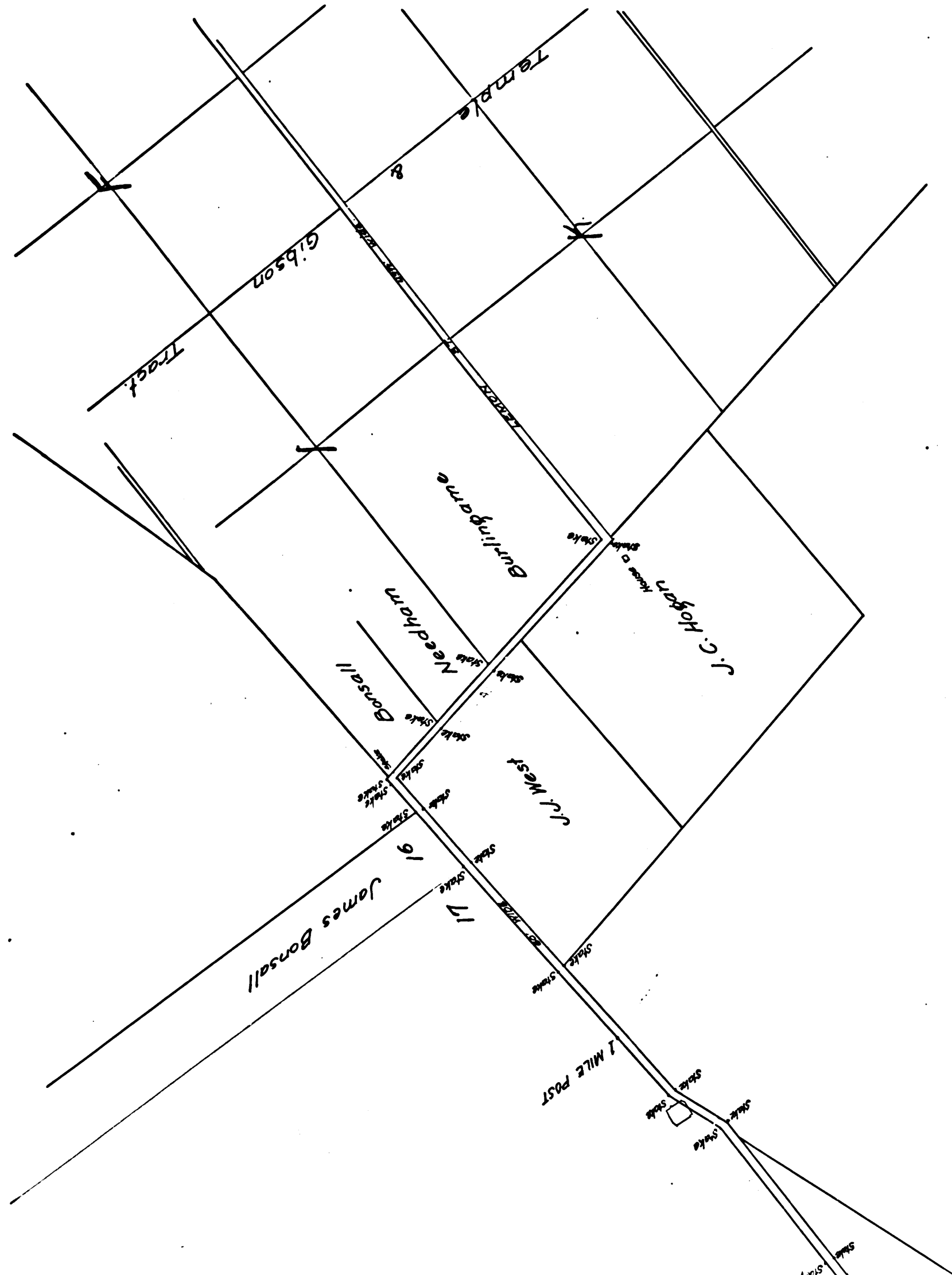
Retraced by R.L. Bl...
Checked by J. Hankitt

RANCHO

Donkey



CS	6	7	9	5
A	6	OF	A	7



SAN PEDRO RANCHO
 Dorney & Beaudry

Map of
COUNTY ROAD
 From
COMPTON to SANTA MONICA

Filed April 5, 1877
 Road Book 4-45 & 7.0

COUNTY SURVEYORS MAP NO. 6795

T. 2, 3, 5. - R. 13, 14, & 15 W.

See "R" Books 2-575 & 3-180

I. M. 23, 24, & 26

COMPTON AND SANTA MONICA ROAD DECLARED A PUBLIC HIGHWAY BY THE BOARD OF
 SUPERVISORS, JUNE 6, 1877 - ROAD MINUTE BOOK J - PAGE 173

Retraced by R. J. Black, October 1950
 Checked by Franklin Wood, October 1950

CS	6795		
A7	OF	A7	