

AVALON BLVD.
OLD WILMINGTON ROAD

Surveyed May 9, 1877
Filed May 8, 1877
COUNTY SURVEYORS MAP NO 6796

T. J. ELLIS CO. Surveyor

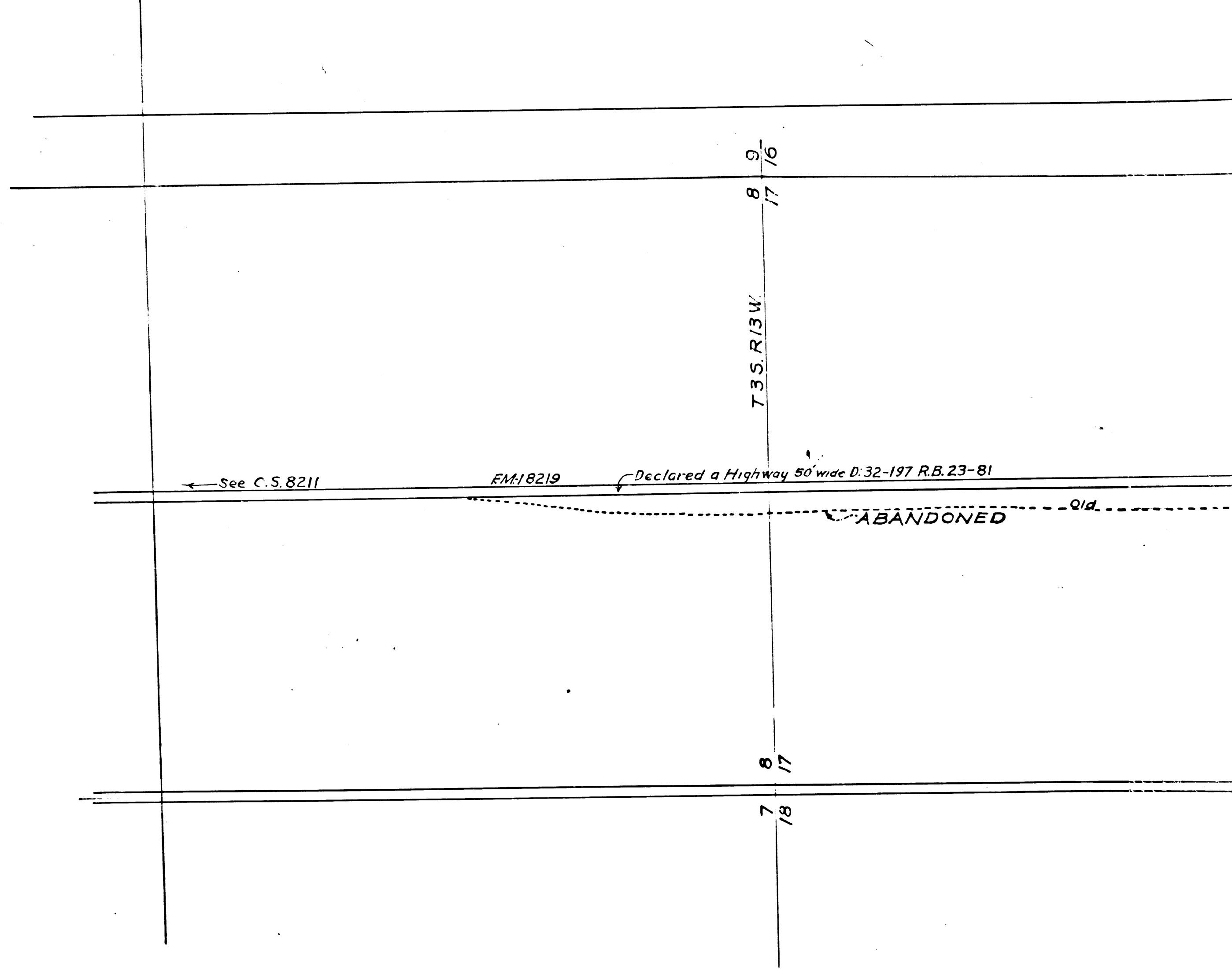
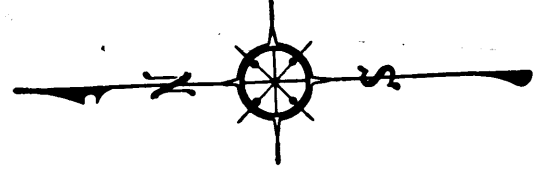
Rd. Maps Bk. 7-11

Scale 1 in = 10 chs.
For Survey Notes See Road Papers 26, Filed May 8, 1877

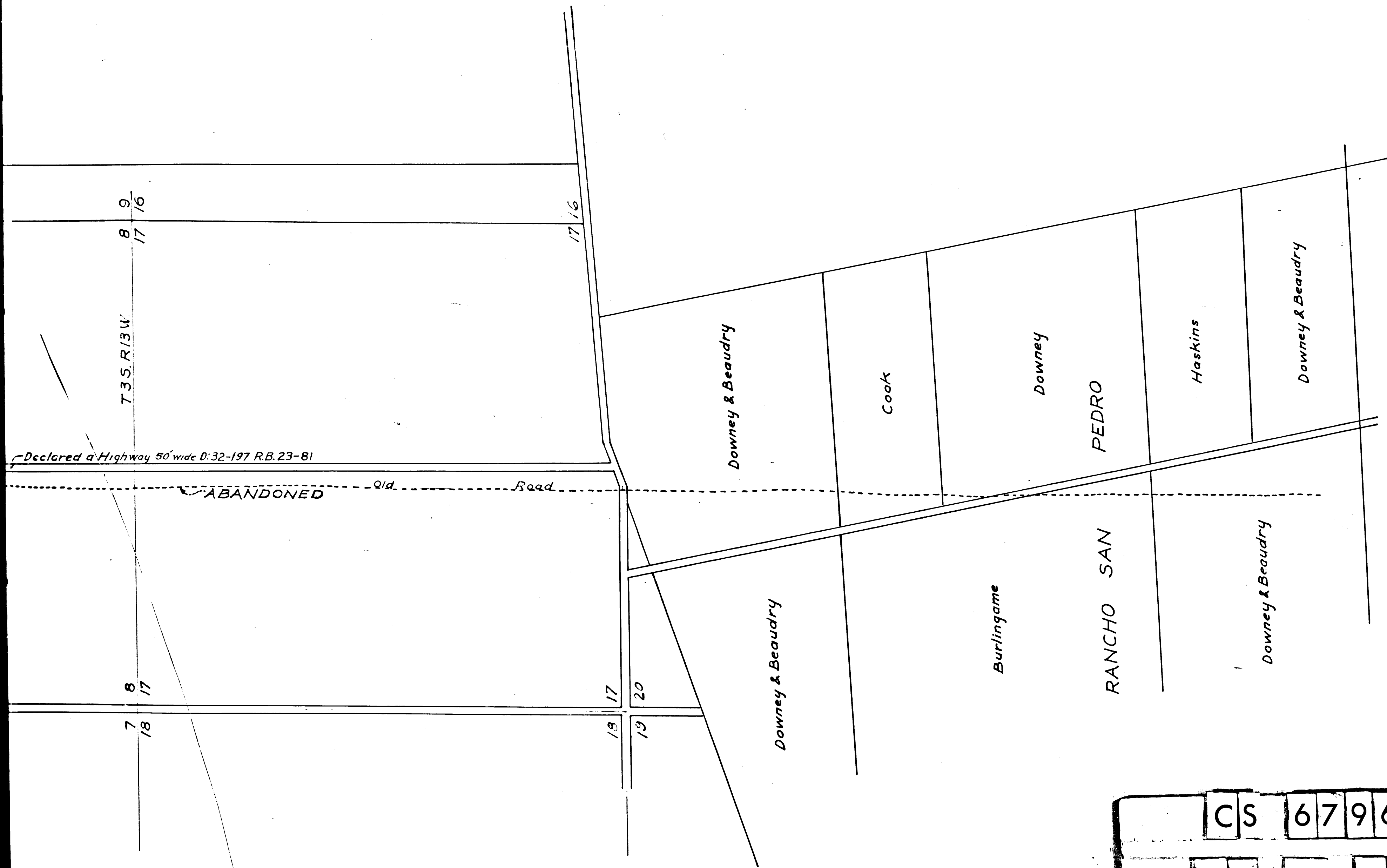
I. M. 26

Declared a Public Highway May 8, 1877, R. B. 1-169 D: 32-8
For Wilmington & L. A. RD. changed to San Pedro St. D: 49-43 R. B. 41-348

Retraced by H. Barrio, June, 1959
Checked by R. J. B.



CS 6796
A1 OF A2



CS	6796
A2	OF A2