

Sta	Bearing	Distance
1	N 21° 05' W	72.34 Cas.
2	N 37° 10' W	2.00 .
3	N 20° 15' W	4.00 .
4	N 31° 40' E.	5.50 .
5	N 27° 00' E.	10.00 .
6	N 37° 00' E.	12.00 .
7	N 32° 45' E.	6.00 .
8	N 37° 45' E.	4.00 .
9	N 35° 40' E.	2.79 .
10	N 70° 50' E.	1.46 .
11	S 86° 25' E.	3.40 .
12	N 78° 30' E.	3.50 .
13	N 62° 46' E.	5.10 .
14	N 55° 35' E.	3.63 .
15	N 75° 00' E.	2.94 .
16	N 88° 30' E.	17.00 .
17	N 66° 15' E.	21.75 .
18	N 52° 25' E.	12.78 .
19	S 78° 30' E.	4.13 .
20	N 78° 40' E.	1.41 .
21	N 58° 40' E.	0.89 .
22	S 67° 30' E.	1.20 .
23	S 68° 45' E.	1.58 .
24	N 61° 45' E.	3.56 .
25	N 78° 10' E.	1.50 .

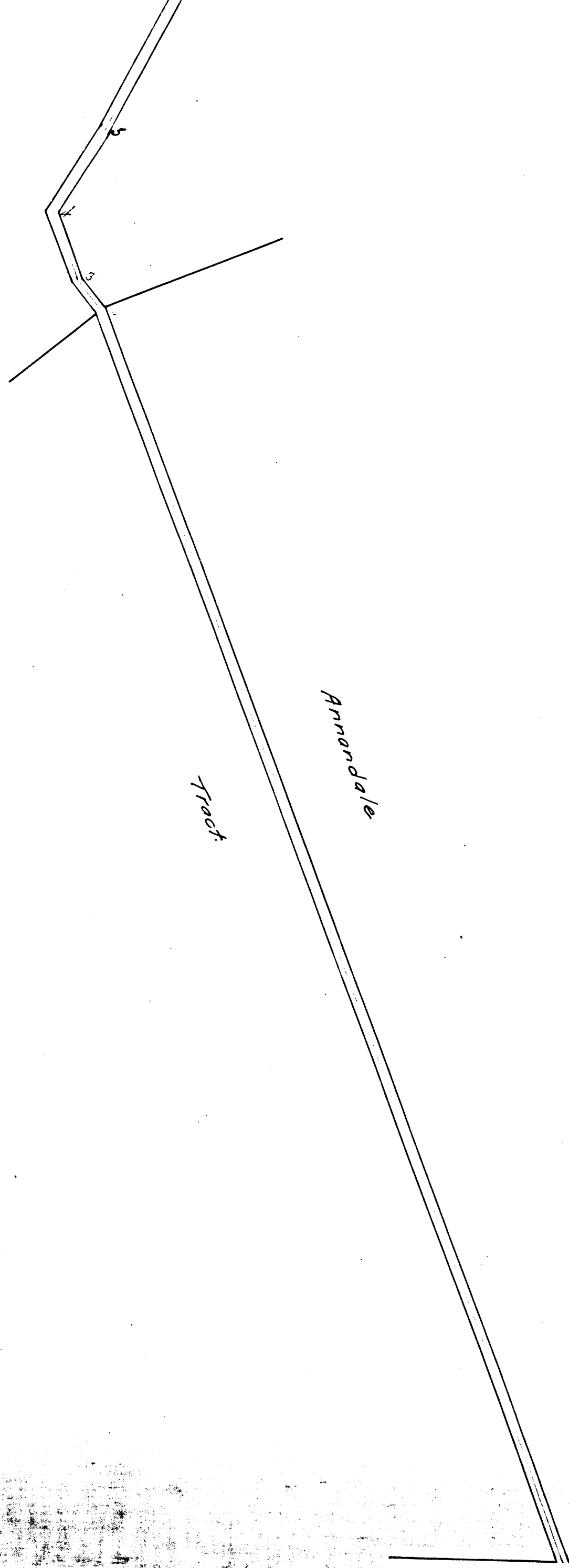
CS 6801  
A 1 OF A 2

Pasadena Boulevard  
from Garvanza to Pasadena via Stuart's.

June 1889  
by Harry F. Stafford,  
Co. Sur.

I.M. 8 C. S. 6801

Scale 1/2" = 10'



No.	Bearing	Distance
1	N 21°05' W	72.34 Chs.
2	N 37°10' W	2.00 .
3	N 20°15' W	4.00 .
4	N 31°40' E	5.50 .
5	N 27°00' E	10.00 .
6	N 37°00' E	12.00 .
7	N 32°45' E	6.00 .
8	N 37°45' E.	4.00 .
9	N 55°40' E	2.79 .
10	N 70°30' E	1.46 .
11	S 86°26' E	2.40 .
12	N 78°30' E	3.50 .
13	N 42°36' E	5.10 .
14	N 55°35' E	3.63 .
15	N 75°00' E	2.94 .
16	N 88°30' E.	17.08 .
17	N 66°15' E.	21.76 .
18	N 52°25' E.	12.78 .
19	S 78°50' E.	4.13 .
20	N 73°40' E.	1.41 .
21	N 53°40' E.	0.69 .
22	S 67°30' E.	1.20 .
23	S 88°45' E.	1.68 .
24	N 61°45' E.	3.56 .
25	N 78°30' E.	1.95 .
26	N 55°15' E.	1.95 .
27	N 68°10' E.	1.00 .
28	N 3°20' E.	13.88 .
29		
30	S 74°15' E.	131 Chs.
	S 79°00' E.	0.47 .
	N 45°00' E.	3.13 .
	S 81°10' E.	0.38 .

Pasadena Boulevard  
 from Garvanza to Pasadena via Stuart's.

June, 1889  
 by Harry F. Stafford,  
 Co. Sur.

I.M. 8 C. S. 6801

Scale 5 ch. = 1 in.

Filed June 8, 1889

Road Book 13-11.

CS 6801  
 A 2 OF A 2

Garvanza