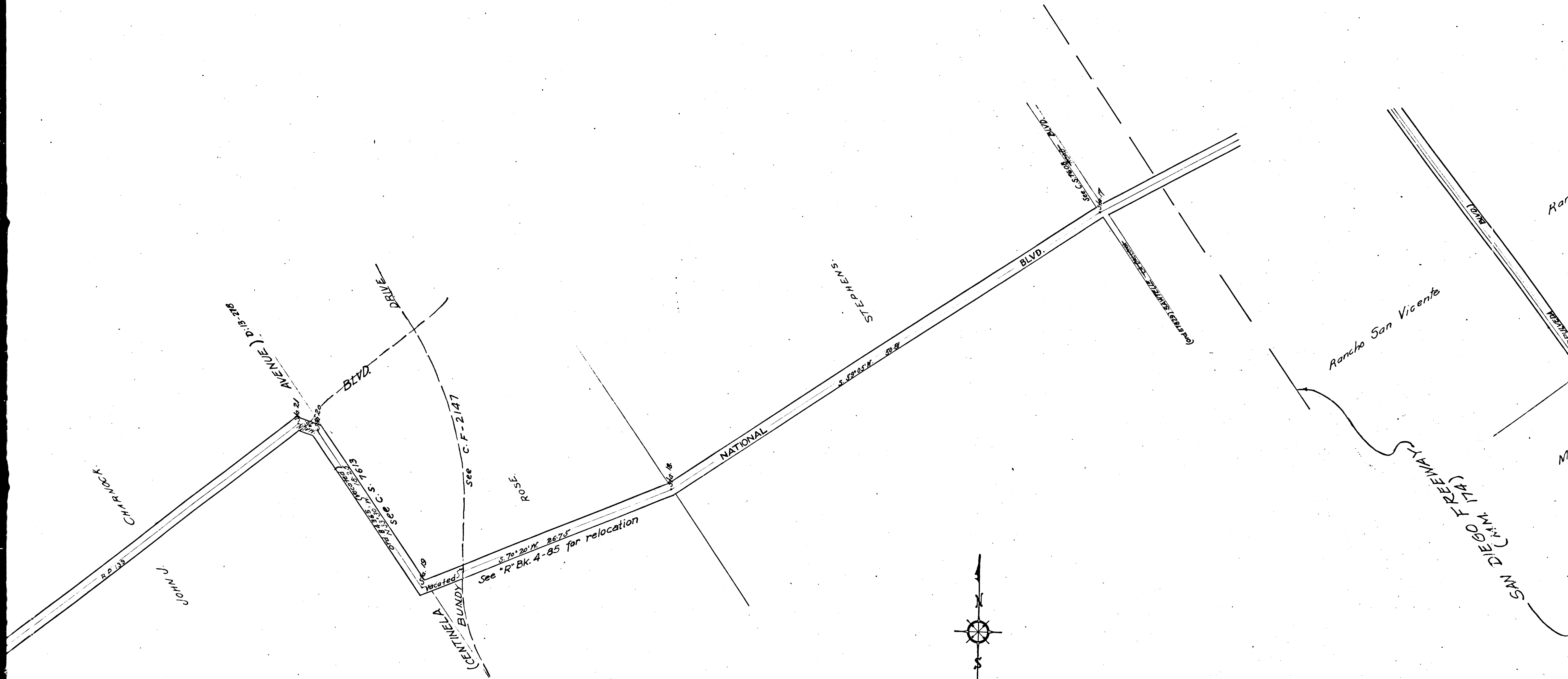




CS	6819
A1	OF A4

CHARACT

For M
 Centra



For National Blvd. changed to Central Ave ~ D:25-198
 Central Ave changed to Ocean Park Blvd. ~ D:59-125; Ord 460

National Boulevard and Military Avenue.

*As surveyed by Harry F. Stafford—
 Co. Surveyor
 Feb. 1889
 Scale: 5 Chs. to 1 in.*

See Record of Survey 4-17 to 20

COUNTY SURVEYORS MAP NO. 6819

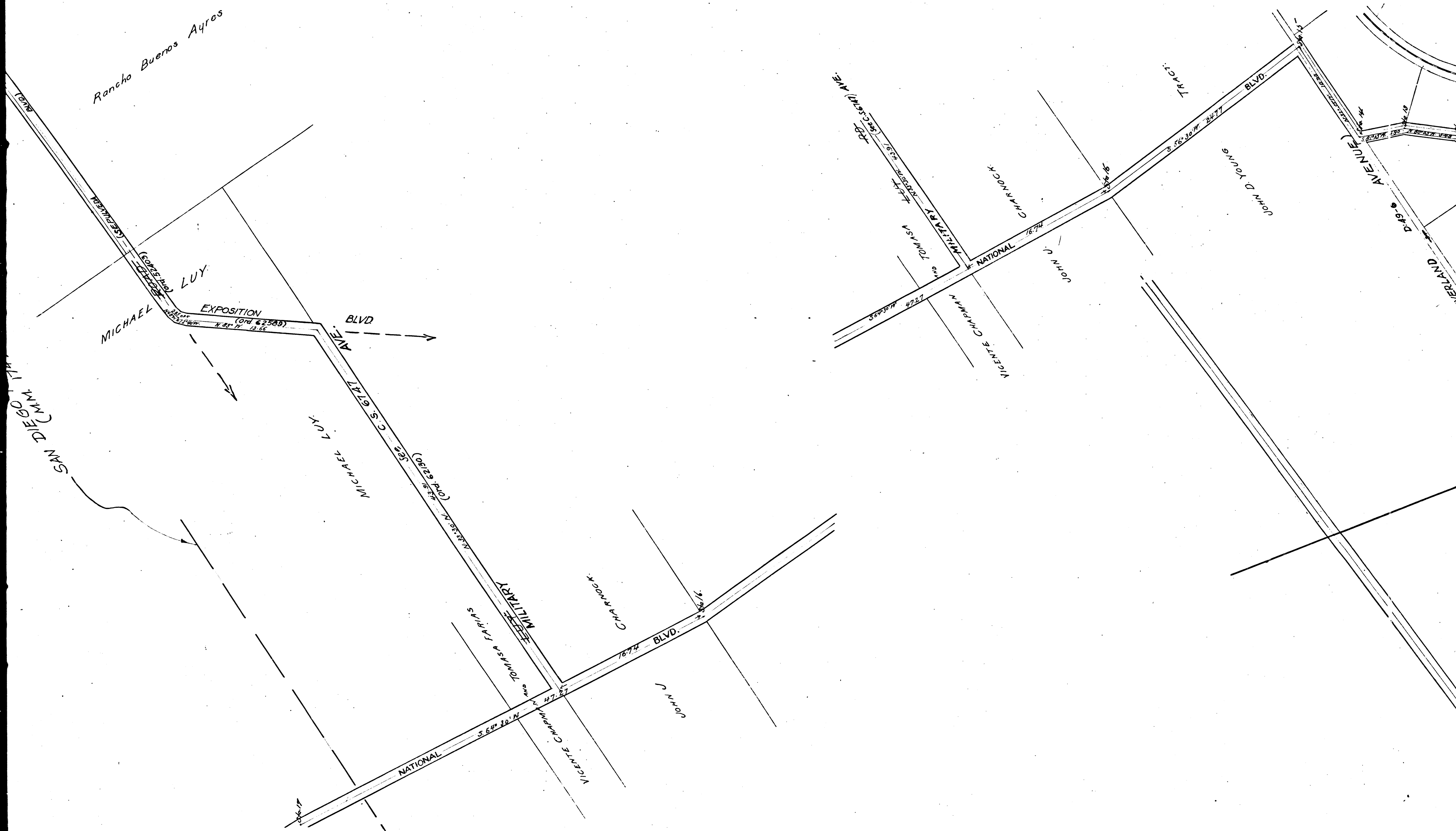
Filed March 1, 1889.

I.M. 21 & 22

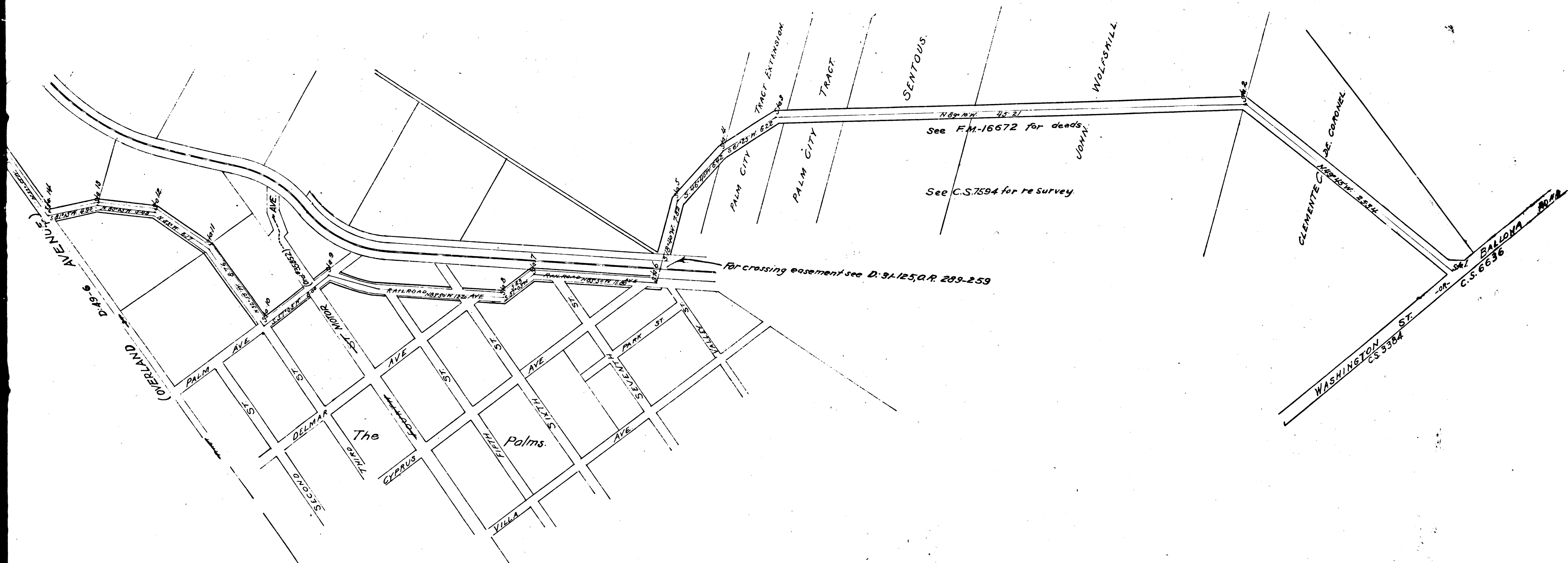
Road Book 8-1, 2, 3 & 4

*See FM-16672 for deeds on National Blvd.
 See C.S. 6747 " " " Military Ave.*

CS	6819
A 2	OF A 4



CS	6	8	1	9
A	3	OF	A	4



12
11.22
11.21

CS	6819
A4	OF A4