

SEPULVEDA BLVD.

Portion of the

~~Long Beach and Redondo Road~~

through the Lands of Mrs. Watson.

Also a Road connecting the Wilmington

Colony Tract with Wilmington & Anaheim Rd

Sept 1891 by Harry F. Stafford

Scale 8 ch = 1 in. C.S. 6821

I.M. 28

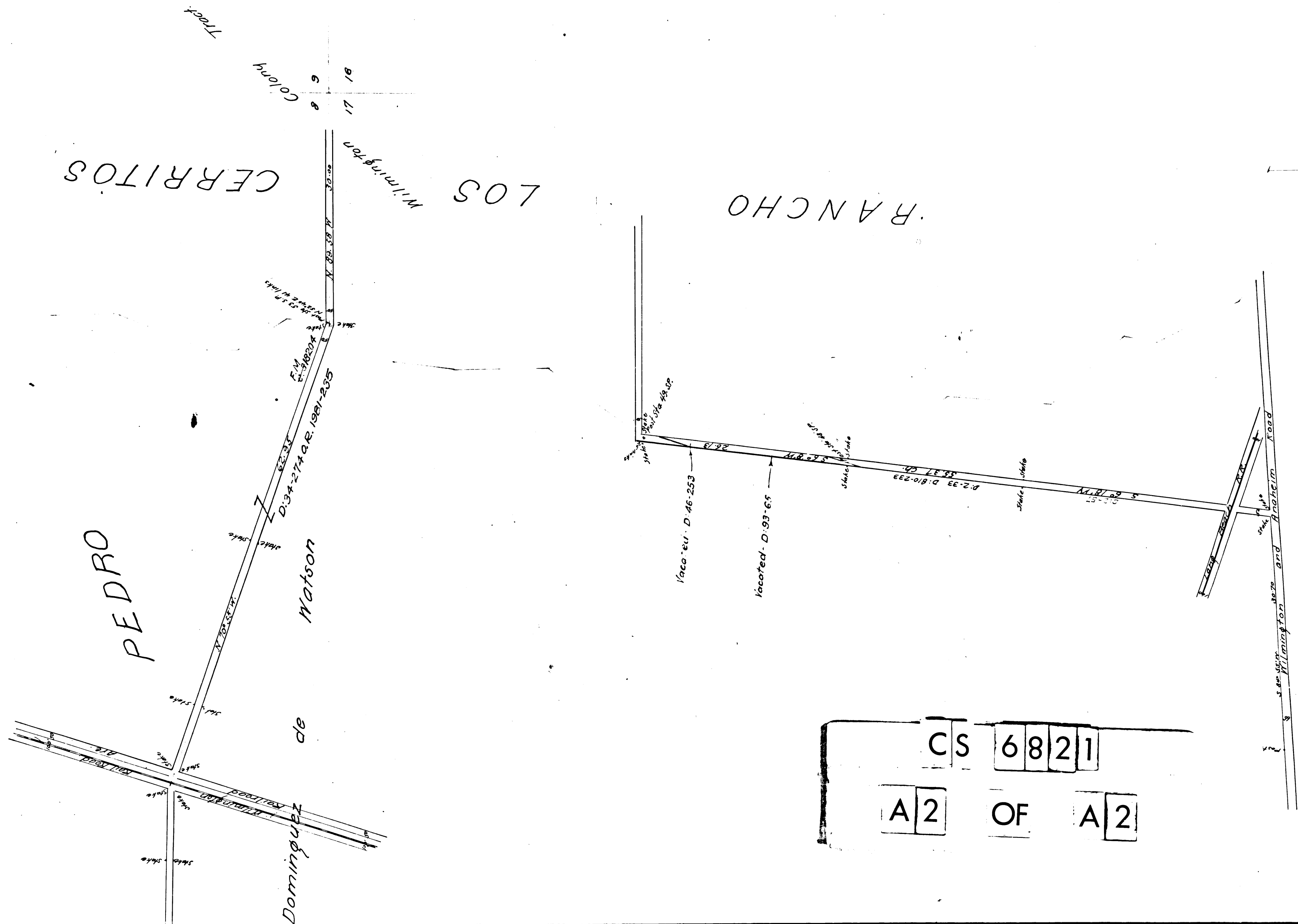
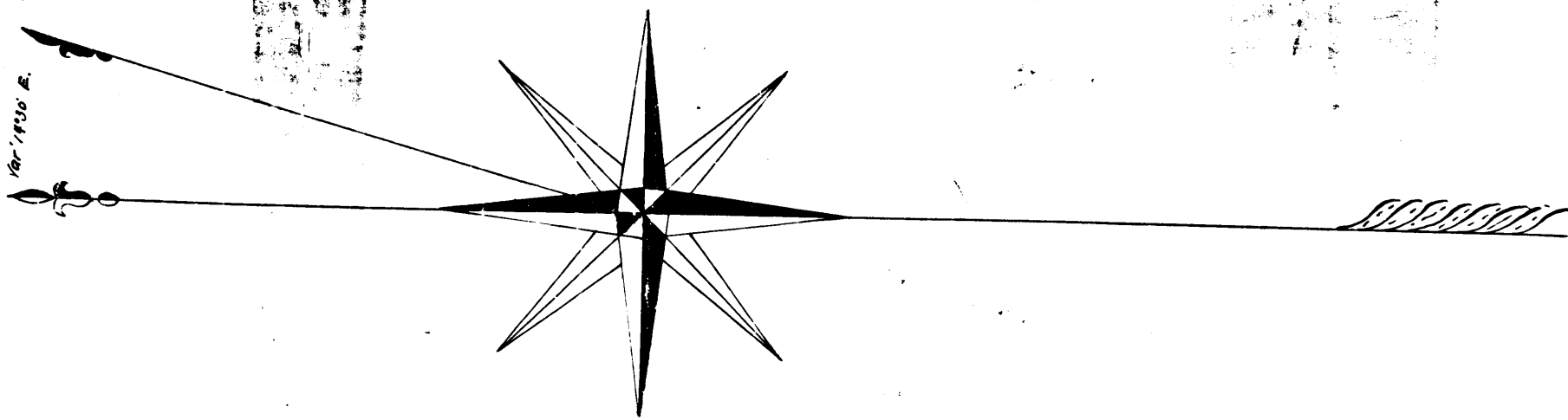
A 1 OF A 2 CS 6821

Filed Oct. 3 1891

Road Book 15-15

For Field Notes see County Surveyor's Record of Surveys - Book 4 Page 278.

Long Beach + Redondo Road changed to Sepulveda Blvd D. 49-202



CS
6
8
2
1

A
2
OF
A
2