

NORWALK BLVD.
Map

showing relocation and straightening of

Norwalk and Puente Mills Road

from sta. 6 to sta. 9

Surveyed May-1893 by A. R. Street - County Surveyor

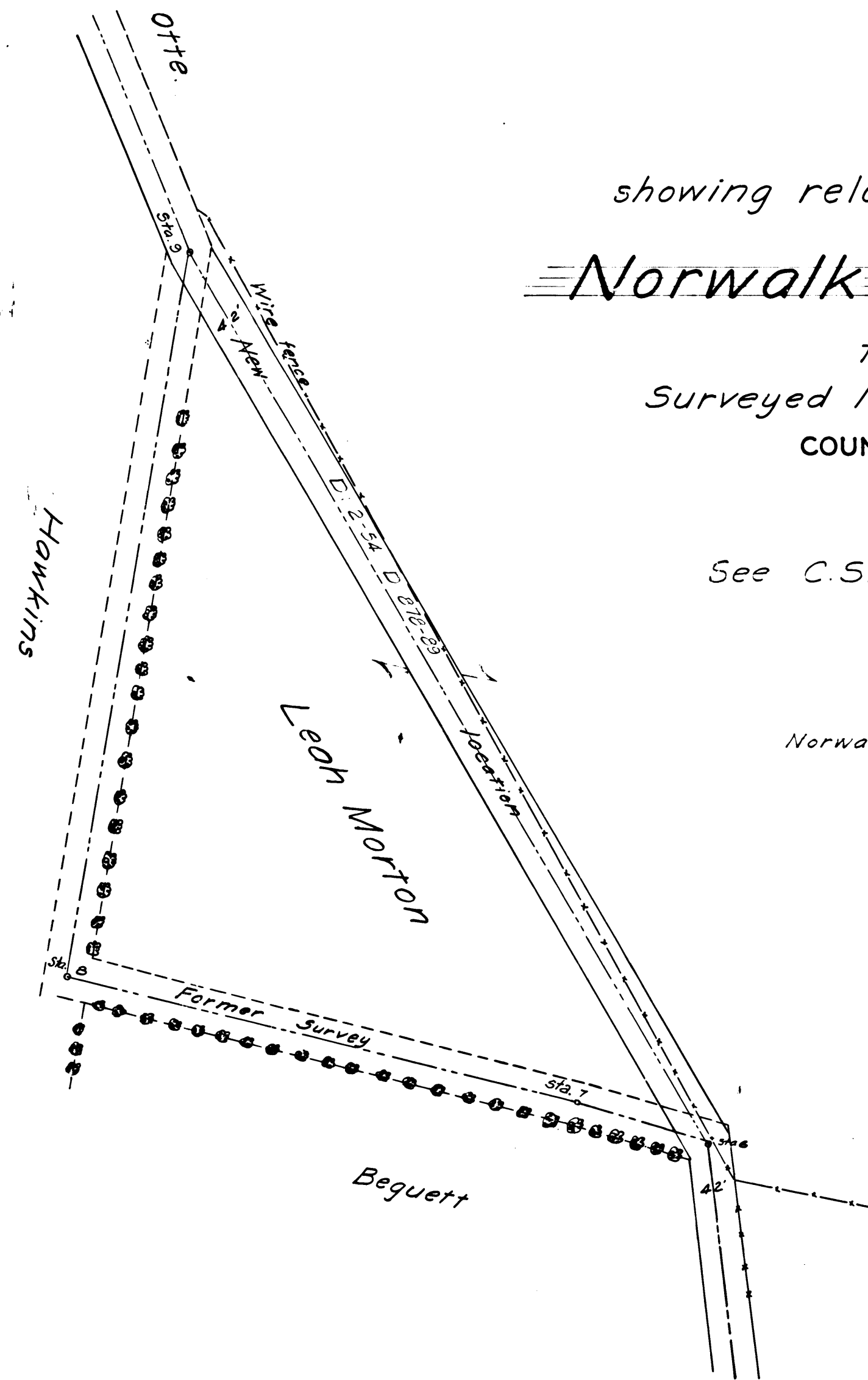
COUNTY SURVEYORS MAP NO 6836

Scale: 1" = 100'

See C.S. 6650 Sht. 1, 2. Road Papers 28

I. M. 37

Norwalk and Puente Mills Road changed to Norwalk Blvd. D: 49-105



Retraced by A. Sue - June - 1959
checked by R.J. Black

C	S	6	8	3	6
---	---	---	---	---	---