

GARFIELD AVE.  
Northern Extension

of the

Compton and Jaboneria Road

Oct. 16 1890

by Harry F. Stafford  
County Surveyor.

C. S. 6861

For Compton & Jaboneria Rd. chg. to Garfield Ave. D: 49-30

scale 8 ch = 1 in.

1. M. 36

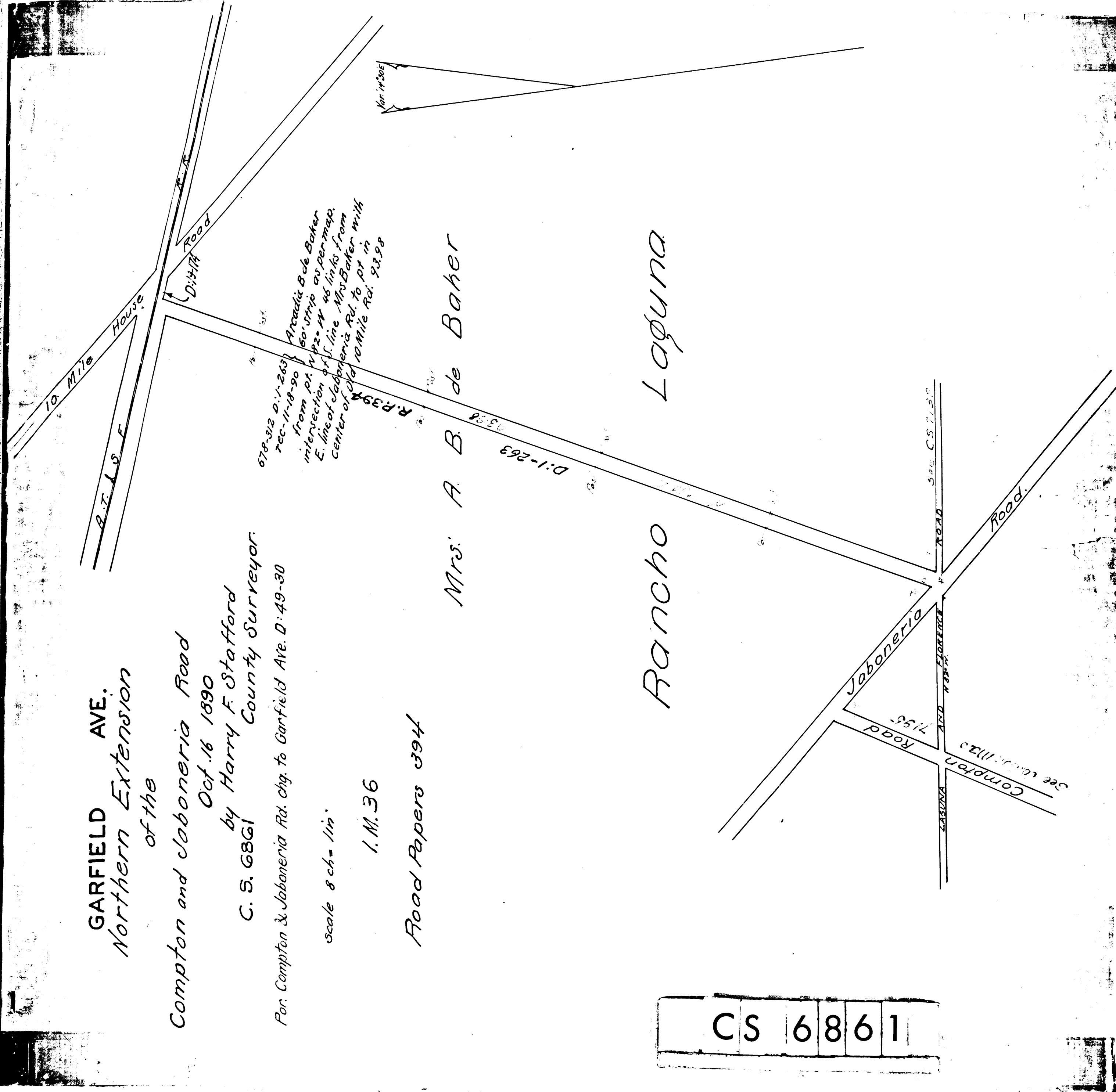
Road Papers 394

Mrs. A. B. de Baher

Rancho

Laguna

CS 6861



678-312 D. I. 263  
rec-11-18-90  
from pt. 1/2  
intersection of  
E. line of Jaboneria Rd. to pt. in  
center of 10 Mile Rd. 9398

Armadillo de Baker  
60' strip as per map  
1/2 W 46 in 1/2 from  
E. line of Jaboneria Rd. to pt. in  
center of 10 Mile Rd. 9398

Mar. 14-2005

D: 1-263

See C. S. 7150

Garfield Ave.

Compton Road

Jaboneria Road

10 Mile House

D. I. 1-263

R. P. 394

See map 1120

Garfield Ave.

Compton Road

Jaboneria Road

10 Mile House

D. I. 1-263

R. P. 394

See map 1120

Garfield Ave.

Compton Road

Jaboneria Road

10 Mile House

D. I. 1-263

R. P. 394

See map 1120

Garfield Ave.

Compton Road

Jaboneria Road

10 Mile House

D. I. 1-263

R. P. 394

See map 1120

Garfield Ave.

Compton Road

Jaboneria Road

10 Mile House

D. I. 1-263

R. P. 394

See map 1120