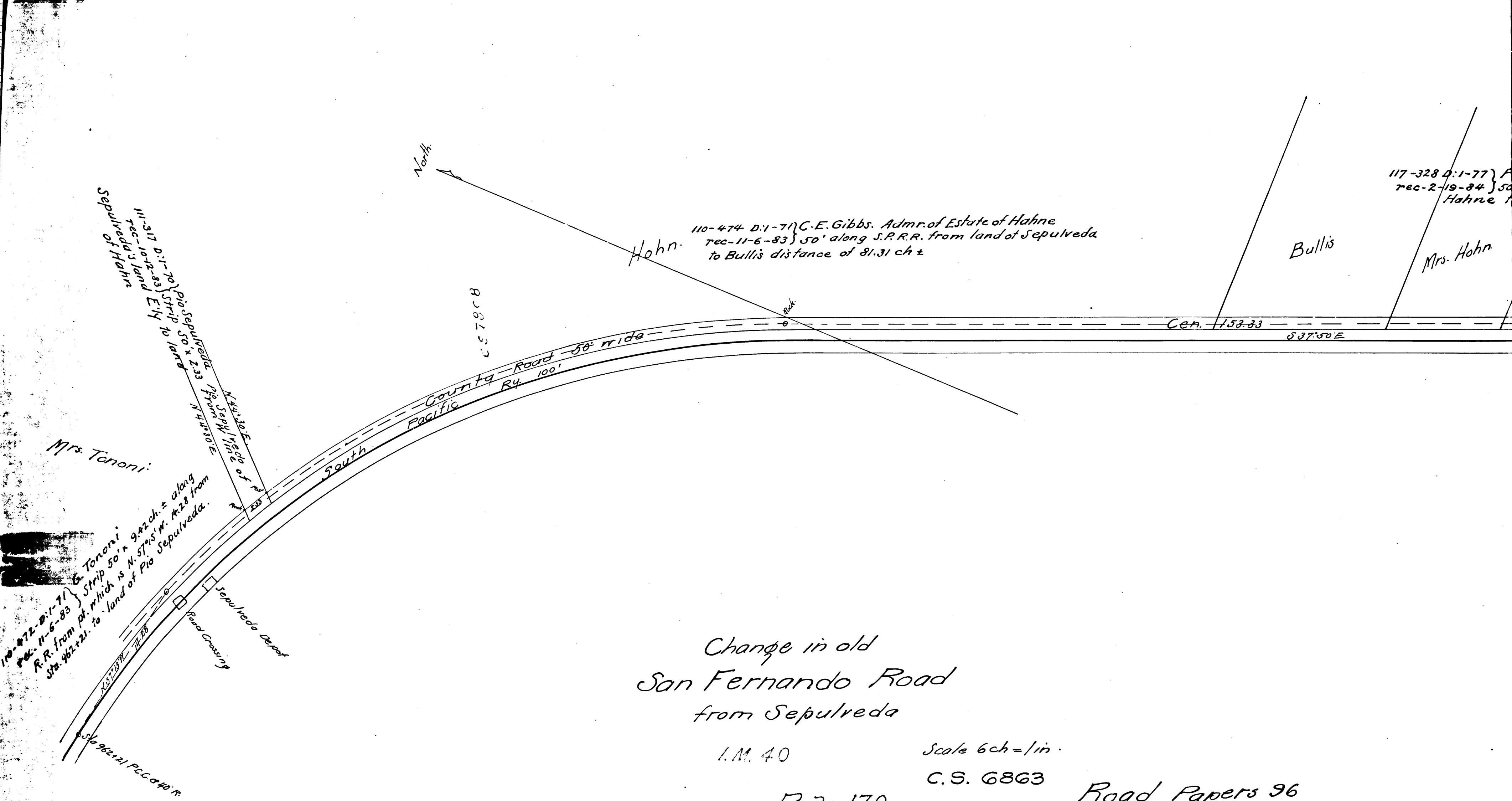


10TH  
957  
MEMCO  
PASADENA  
SOUTH



11-317 D:1-70 } Pio Sepulveda  
 rec-10-12-83 } Strip 50' x 2.33' from  
 Sepulveda's land Ely N 44.23.25.90° E

110-472-D:1-71 } G. Tononi  
 rec-11-6-83 } R.R. from pt. which is N 57.45° W. 428' from  
 Sta. 962+21. to land of Pio Sepulveda.

110-474 D:1-71 } C.E. Gibbs. Admr. of Estate of Hahn  
 rec-11-6-83 } 50' along S.P.R.R. from land of Sepulveda  
 to Bullis distance of 81.31 ch ±

117-328 D:1-77 }  
 rec-2-19-84 } 50'  
 Hahn

11-317 D:1-70 } Pio Sepulveda  
 rec-10-12-83 } Strip 50' x 2.33' from  
 Sepulveda's land Ely N 44.23.25.90° E

110-472-D:1-71 } G. Tononi  
 rec-11-6-83 } R.R. from pt. which is N 57.45° W. 428' from  
 Sta. 962+21. to land of Pio Sepulveda.

110-474 D:1-71 } C.E. Gibbs. Admr. of Estate of Hahn  
 rec-11-6-83 } 50' along S.P.R.R. from land of Sepulveda  
 to Bullis distance of 81.31 ch ±

117-328 D:1-77 }  
 rec-2-19-84 } 50'  
 Hahn

Change in old  
 San Fernando Road  
 from Sepulveda

I.M. 40

Scale 6ch = 1in.

R 3-170

C.S. 6863

Road Papers 96

C	S	6	8	6	3
A	1	OF	A	2	

474 D:1-71 C.E. Gibbs. Admr. of Estate of Hahne  
rec-11-6-83 } 50' along S.P.R.R. from land of Sepulveda  
to Bullis distance of 81.31 ch ±

117-328 D:1-77 } Peter Blackman, Philip Bullis, Jno. Woolsey, A. Glassell  
rec-2-19-84 } 50' x 58 ch. ± along S.P.R.R. from land of  
Hahne to land of Watts et al.

Bullis

Mrs. Hahn

Woolsey

Backman

Watts

Nicks & others

Cent. 1158.83  
S 37.50 E

Old road - 66' wide to Los Angeles ->

Surveyed June 1883 by John E. Jackson.  
Co. Sur.

Change in old  
Fernando Road  
from Sepulveda

I.M. 40

Scale 6 ch = 1 in.

R 3-170

C.S. 6863

Road Papers 96

Filed July 2 1883

C	S	6	8	6	3
A	2	OF	A	2	

HL05

VEMCO  
PASADENA, CAL.

10TH  
957