

IMPERIAL HY.
~~COUNTY ROAD NO. 302~~

from
 Rancho Sausal Redondo to L. A. & San Pedro

C. S. 6866

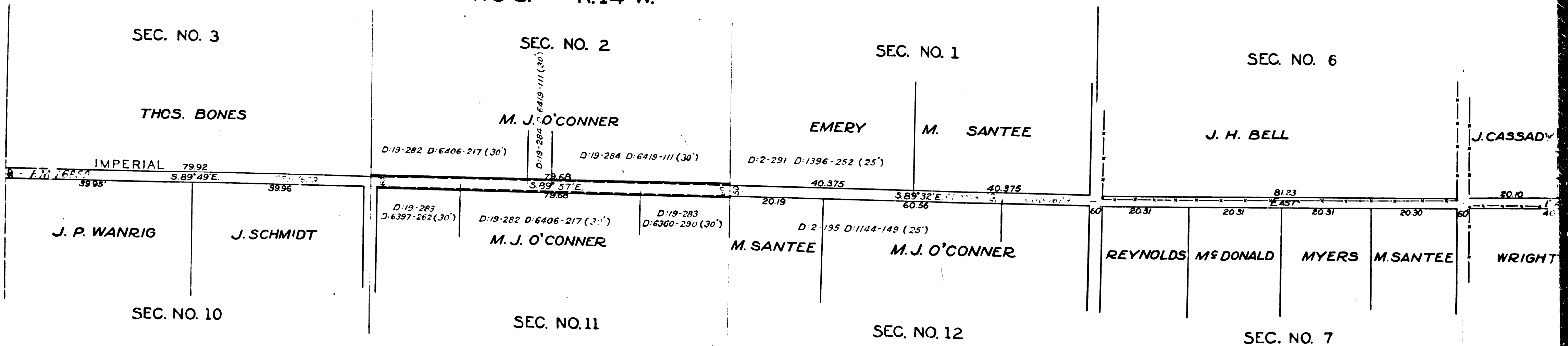
May 31, 1886.
 by E. T. Wright
 I. M. ZG Co. Sur.

Scale 15 Ch. = 1 in. for Length.
 Scale 5 " = 1 " Width.
 Distances to center of Roads

Por. 114th St. (Co. Rd. No. 302) changed to Imperial Highway - D: 49-97



T. 3 S. R. 14 W.



CS 6866
 A1 OF A2

IMPERIAL HY. COUNTY ROAD NO. 302

from
Sausal Redondo to L. A. & San Pedro R.R.

C.S. 6866

May 31, 1886.
by E.T. Wright
I.M.26 Co. Sur.

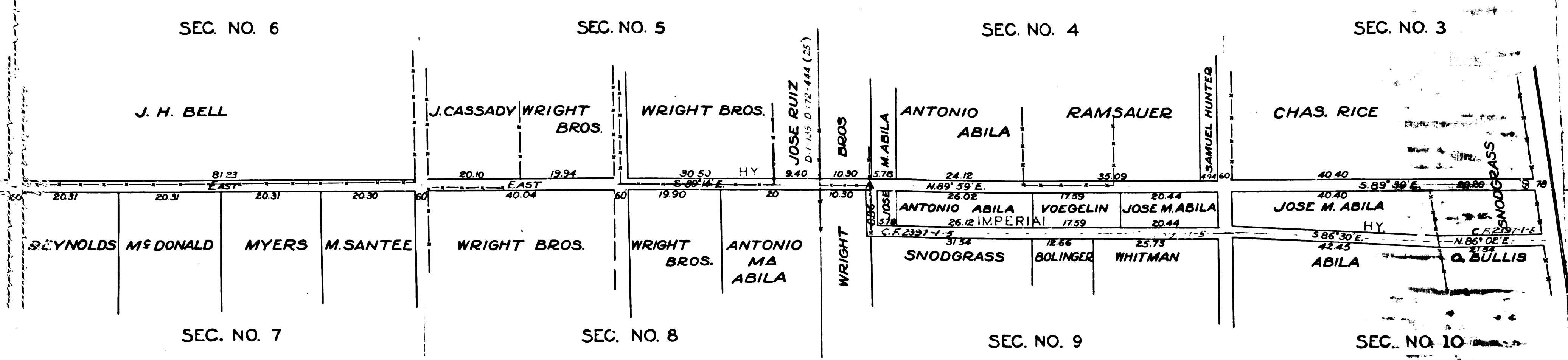
Scale 15 Ch. = 1 in for Length.
Scale 5 = 1 . . . Width.
Distances to center of Roads

FILED JUNE 9, 1886.

ROAD PAPERS 152

(Co. Rd. No. 302) changed to Imperial Highway - D: 49-97

T. 3 S. R. 13 W.



CS 6866
A2 OF A2