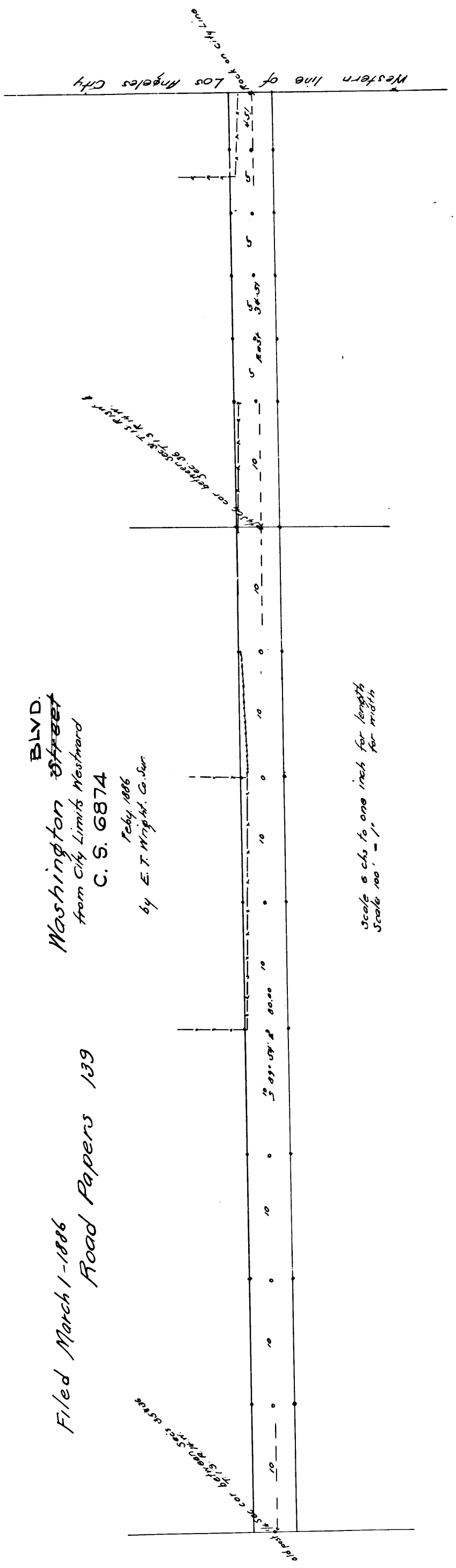


BLVD.
 Washington Street
 from City Limits Westward
 C. S. 6874
 July 1886
 by E. T. Wright, C. S. J.

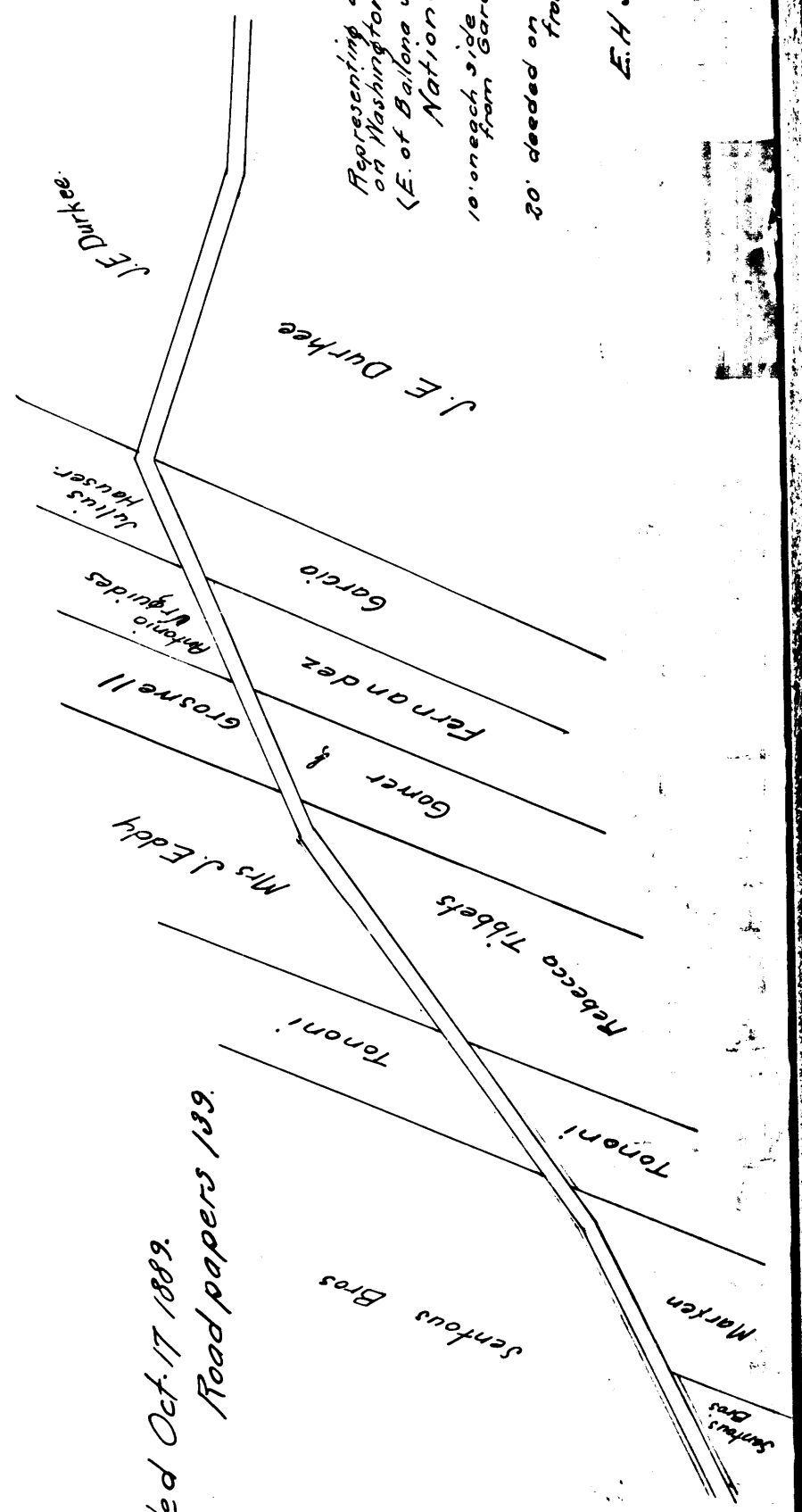
Filed March 1-1886
 Road Papers 139



Scale 100 = 1' one inch for length
 one inch for width

CS 6874

Filed Oct. 17 1889.
 Road papers 139.



Representing about 3 miles
 on Washington St. Extension
 (E. of Balboa Station) of
 National Boulevard
 from Garza & Tibbet
 20' deduced on U. side of road
 from U. E. Durkee

E. H. Speerster
 Oct 17 1889