

N  
 Filed Sept 6 1886  
 Road Papers 146  
 C.S. 6883  
**FARMDALE AVE.**  
 Name changed to Farmdale Ave  
 See 14-15-2 also Ord 93873  
 -Bromm County Road-

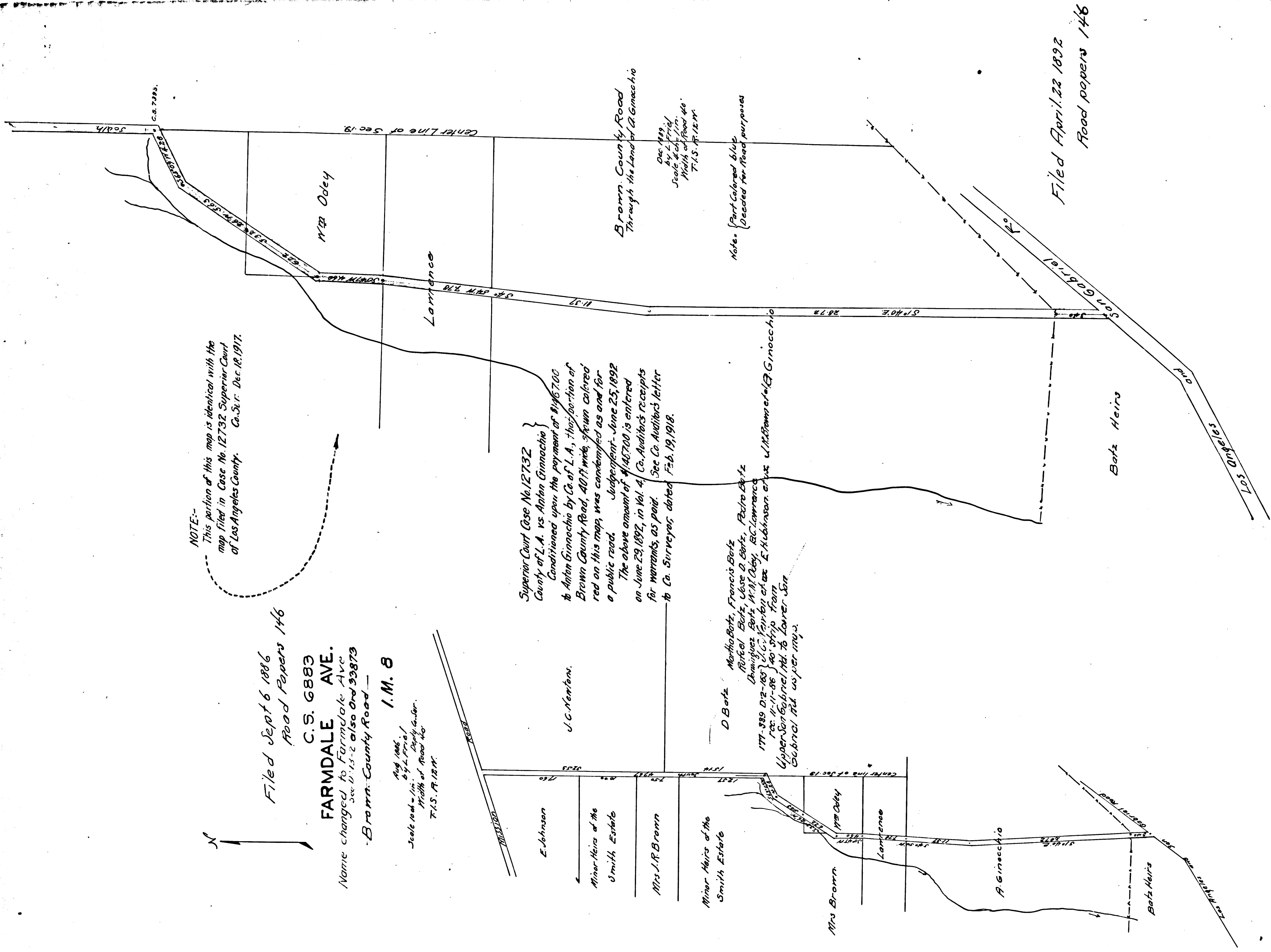
Aug 1886  
 6 1/4" x 11 1/2"  
 Scale 100' = 1" Depth color  
 Width of Road 40'  
 T.S. R. 12 N.

I.M. 8

NOTE:-  
 This portion of this map is identical with the  
 map filed in Case No. 12732 Superior Court  
 of Los Angeles County. Co. S. r. Dec. 12, 1917.

Superior Court Case No. 12732  
 County of L.A. vs Anton Ginnocchio  
 Conditioned upon the payment of \$146,700  
 to Anton Ginnocchio by Co. of L.A., this portion of  
 Brown County Road, 40 ft wide, shown colored  
 red on this map, was condemned as and for  
 a public road. Judgment - June 25, 1892  
 The above amount of \$146,700 is entered  
 on June 29, 1892, in Vol. 4, Co. Auditor's receipts  
 for warrants, as paid. See Co. Auditor's letter  
 to Co. Surveyor, dated Feb. 19, 1918.

D. B. Bats  
 Martha Bats, Francis Bats  
 Bertha Bats, Jose O. Bats, Pedro Bats  
 Dominguez Bats, M. M. Odey, B. C. Lawrence  
 177-389 D. 2-103 J. C. Karpis et al vs E. M. Johnson et al  
 Upper San Gabriel Mt. to Lower San  
 Gabriel Mt. w per mo.



Note: Part Colored blue  
 Decided for Road purposes

Dec 1889  
 By L. P. Ford  
 Scale 40' = 1"  
 Width of Road 40'  
 T.S. R. 12 N.

Filed April 22 1892  
 Road papers 146

CS 6883