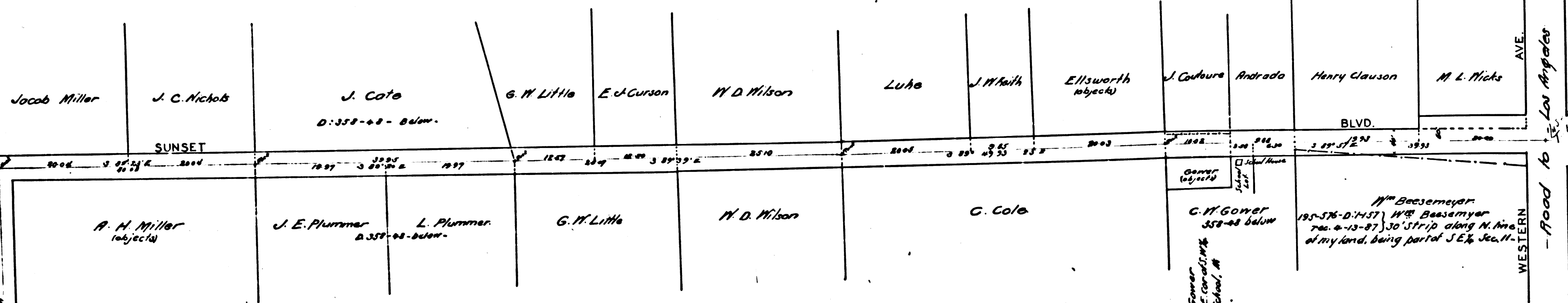


SUNSET BLVD.
~~Laurel County Road~~

Road Papers 116

I. M. 40 C. S. 6895

January 1896
 by E. T. Wright



189-72 2-1-86 } L. E. May
 700-12-9-87 } 20' strip off E. side of S.E. 1/4 cor. of
 FAIRFAX AVE.
 189-72 2-1-86 }
 700-12-9-87 }

358-48 D-1472 } J. M. Cote, J. E. Plummer & Trustees for School
 700-12-9-87 } Beg. of S.E. cor of Nichols & N. E. Cor of Miller,
 N. E. 1/4 cor. bet Sec. 11 & 12

Scale 10 chs to one inch for length.
 . 100 feet width

C. M. Gower
 358-48 below
 537-223 D-1-237 } Mary G. Gower
 700-12-9-87 } Beg. at N.E. cor of M. W.
 Sec. 11 N. E. 1/4 cor. of M. W. School, M.
 N. 1/2 N. E. 1/4 cor. of M. W. School, M.

M. Boesemeyer
 185-576-D: 1437 } W. S. Boesemeyer
 rec. 4-13-87 } 30' strip along N. line
 of my land, being part of S.E. 1/4 Sec. 11.

Sec. 8
 Sec. 9
 Sec. 17, □ Low of school House, Sec. 16
 T. 15 R. 14 W.

CS 6895