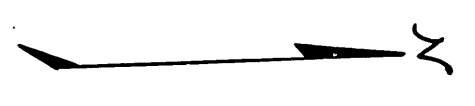
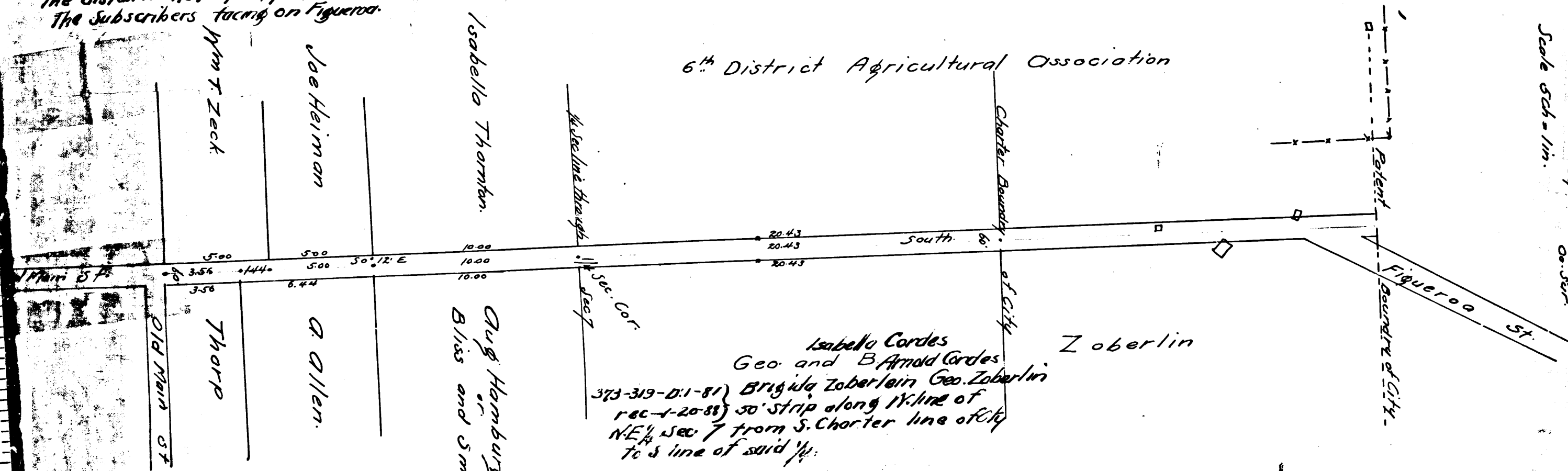


Figueroa St. Extension Sht. 24 C.S. 6899



373-197-01-180 Joe Heimann, Wm Zeck P.T. Royal, H. Minans, J.B.M. Michael Anson Fitcher
rec. 1-20-88 50' strip for length
the distance the property of
The subscribers facing on Figueroa.

6th District Agricultural Association



Isabella Cordes
Geo. and B. Arnold Cordes
373-319-01-81 Brigida Zoberlein Geo. Zoberlein
rec. 1-20-88 50' strip along N. line of
NE 1/4 Sec. 7 from S. Charter line of City
to S. line of said 1/4.

Road papers 248

Scale 50' = 1 in.
Dist. 1886
by E.T. Wright

C S 6 8 9 9

VEMCO
PASADENA, CALIF.

VEMCO
PASADENA, CALIF.

10TH
957

10TH
957

10TH
957

10TH
957