



VEMCO  
PASADENA, CAL.

957

10TH

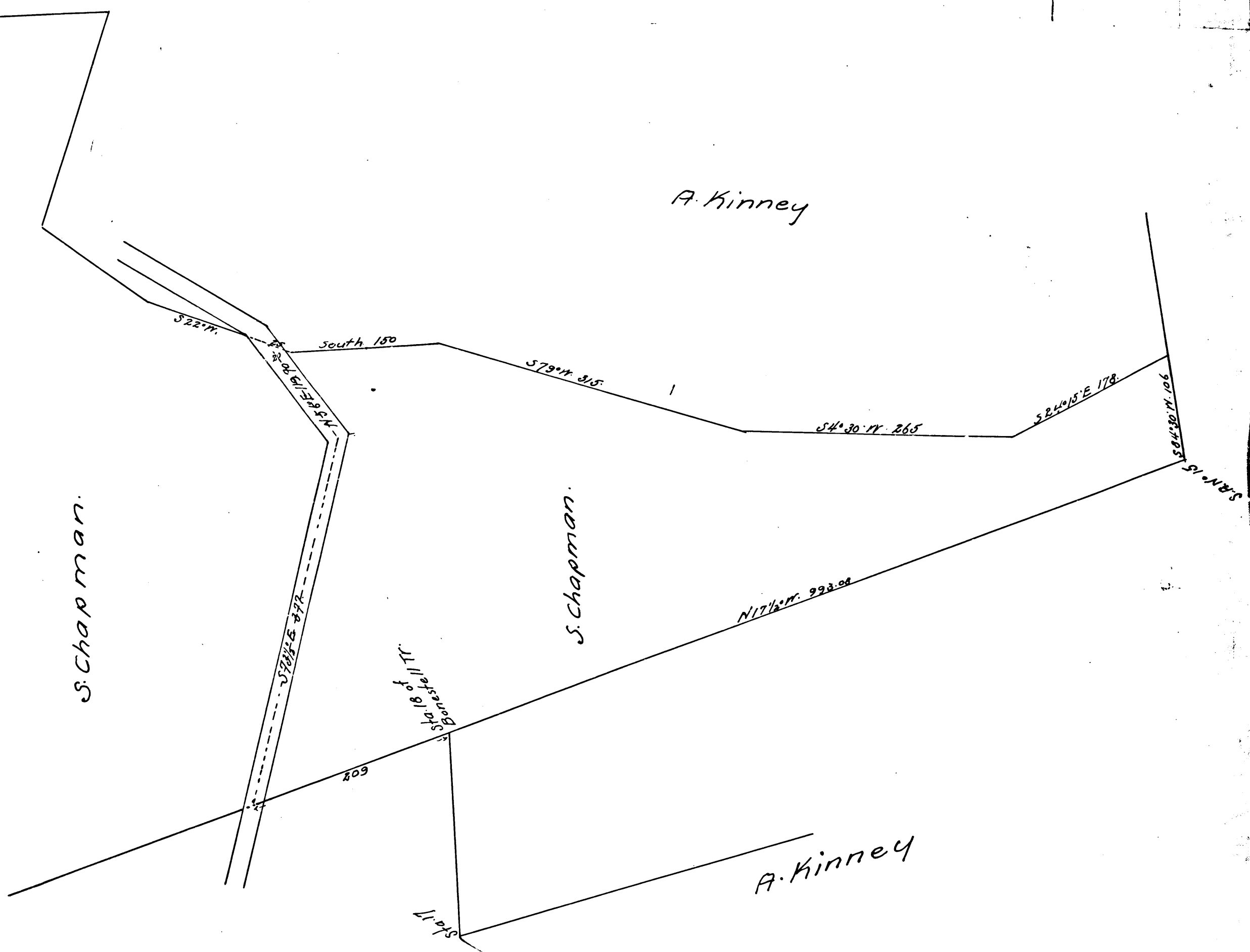
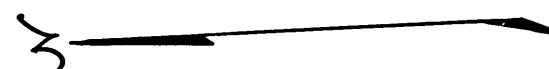
Plat  
of a private Road  
for A. Kinney

Surveyed Apr 1885  
by E.T. Wright  
Co. Sur.  
C.S. 6903

Scale 100' = 1 in.

Flood Papers 82

INDEX 88-D,E-7



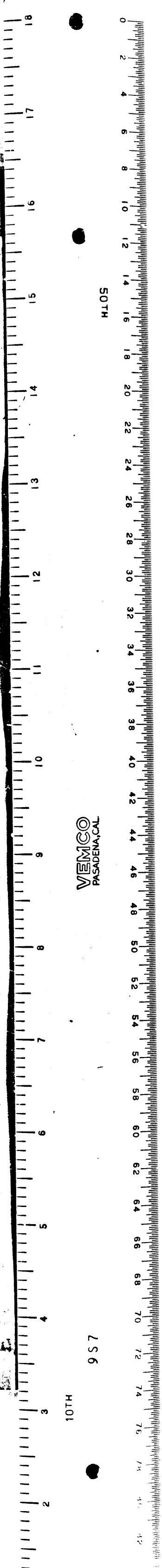
S. Chapman.

S. Chapman.

A. Kinney

A. Kinney

CS 6903



VEMCO  
PASADENA, CAL.

957

10TH