

Change in Road from  
Los Angeles to El Monte.

Sec. 17.

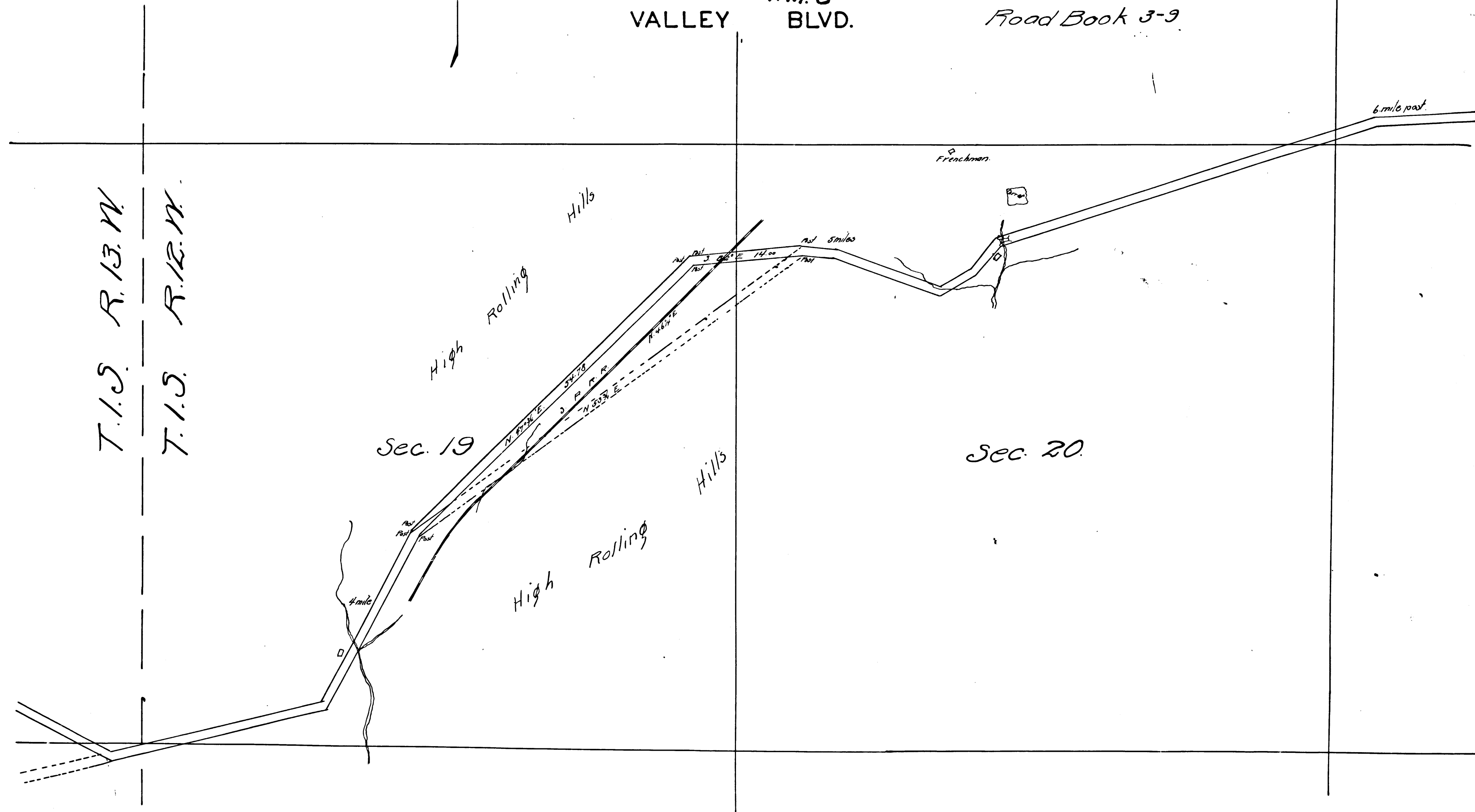
T.J. Ellis Co. Sur.

I.M. 8 C.S. 6905

VALLEY

BLVD.

Road Book 3-9



T.1.S. R.13.N.  
T.1.S. R.12.N.

Sec. 19

Sec. 20

CS 6905