

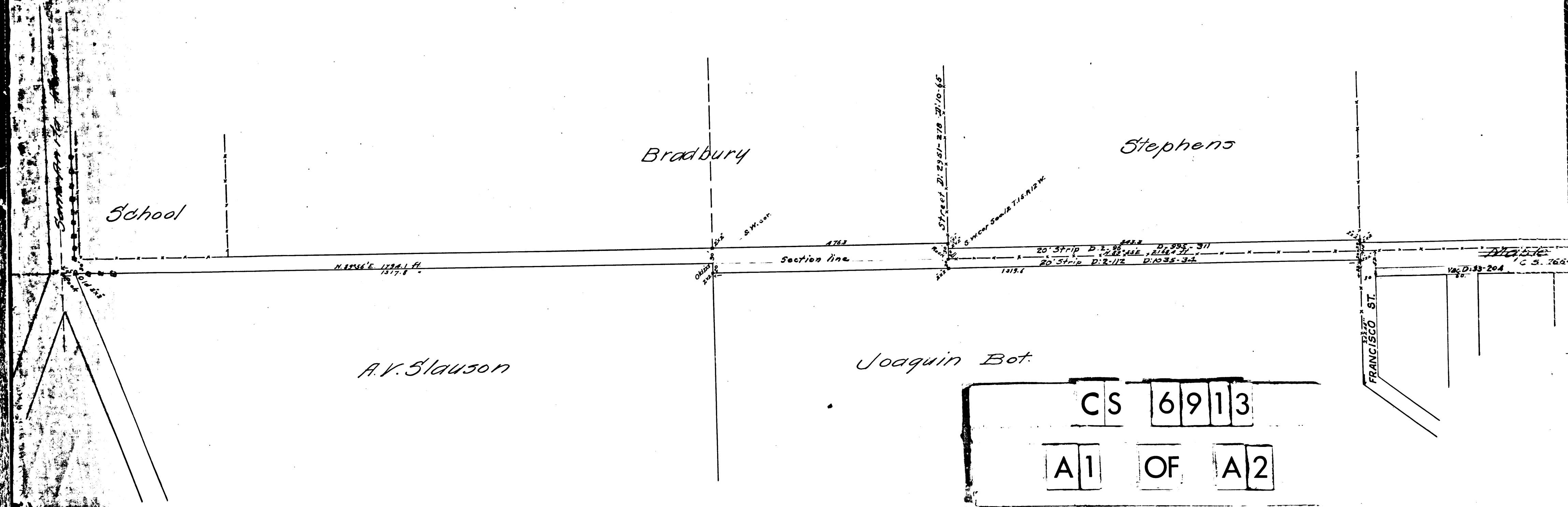
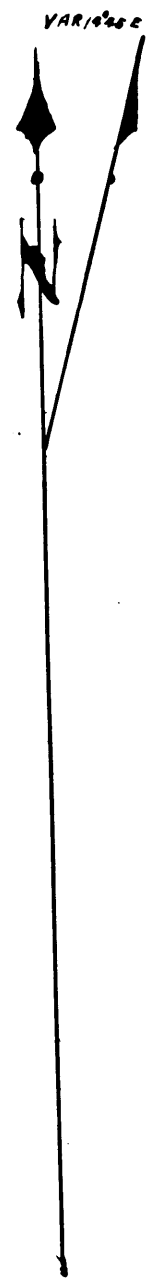
GRAND AVE.
Maple Avenue
SAN GABRIEL ROAD DISTRICT

Los Angeles, Co. California.
Surveyed under instructions from the
Hon. Board of Supervisors.

Nov. 30th 1894.
by A. R. Street.
Co. Sur.
C. S. 6913
R: 5-290
I. M. 44

Filed Dec. 6, 1894.

Scale 120 feet to one inch.



GRAND AVE.
Maple Avenue
 SAN GABRIEL ROAD DISTRICT

Los Angeles, Co. California.
 Surveyed under instructions from the
 Hon. Board of Supervisors.

Nov. 30th 1894.
 by A. R. Street.

Filed Dec. 6, 1894.

Co. Sur.
 C. S. 6913
 R: 5-290
 I. M. 44

Feet to one inch.

