

WINDSOR RD. GARFIELD AVE.

~~Ninth Street Extension~~

GLENDALE

Los Angeles Road District

Surveyed and platted from maps and records  
Under instructions from the

Honorable Board of Supervisors  
of Los Angeles County, Cal.

64

Filed May 25, 1894.

A. R. Street, County Surveyor.

Jan. 17 1894. C. S. 6915

Scale: 2 Chs. per inch. I. M. 41



CS 6915  
A1 OF A2

WINDSOR RD. GARFIELD AVE.

~~Ninth Street Extension~~

GLENDALE

Los Angeles Road District

Surveyed Nov. 28, 1894.

by Alfred R. Street.

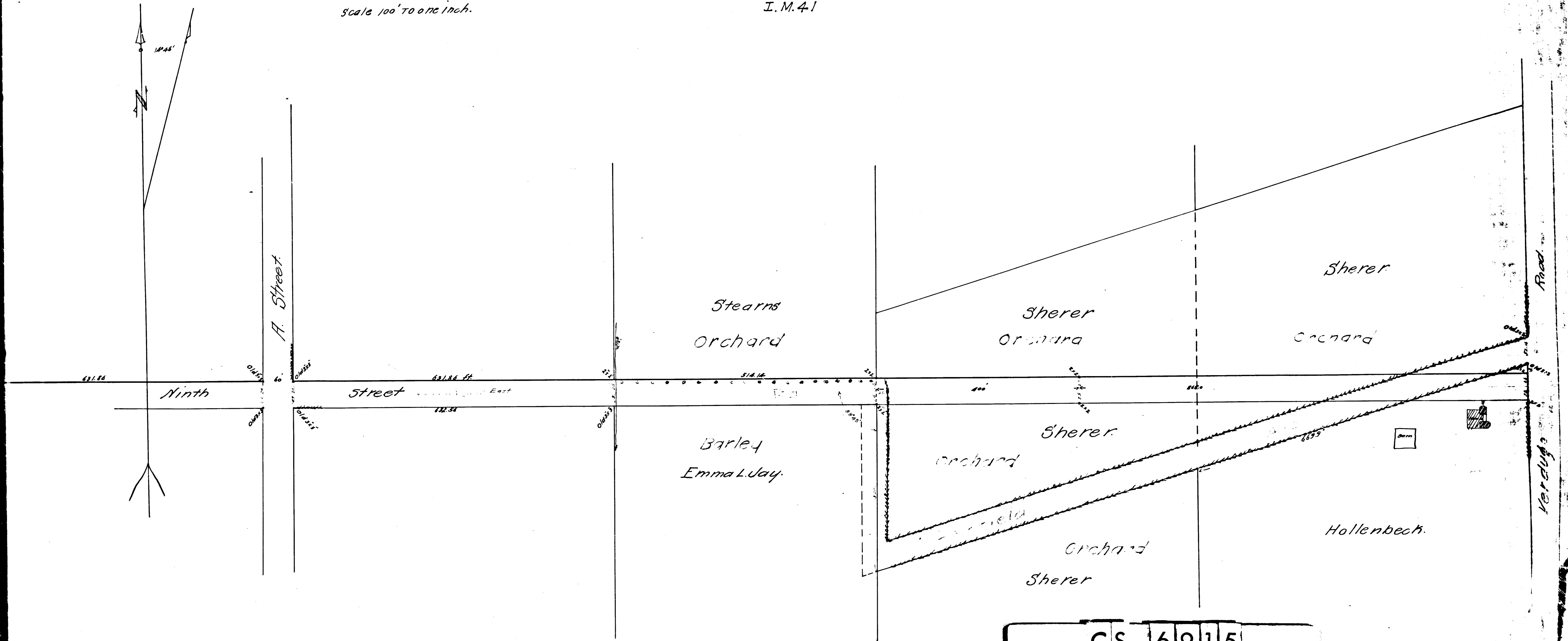
Co. Sur.

C. S. 6915

I. M. 41

Filed Dec. 6, 1894.

Scale 100' to one inch.



CS	6	9	1	5
A	2	OF	A	2