

MAP
OF THE
San Fernando and Tejunõa Road
surveyed under instructions from the
Honorable Board of Supervisors
OF
Los Angeles Co., Cal.
IN
San Fernando Road District

as surveyed by
A. R. Street, County Surveyor

April, 9-10,
1894.

I.M. 53 C.S. 6916

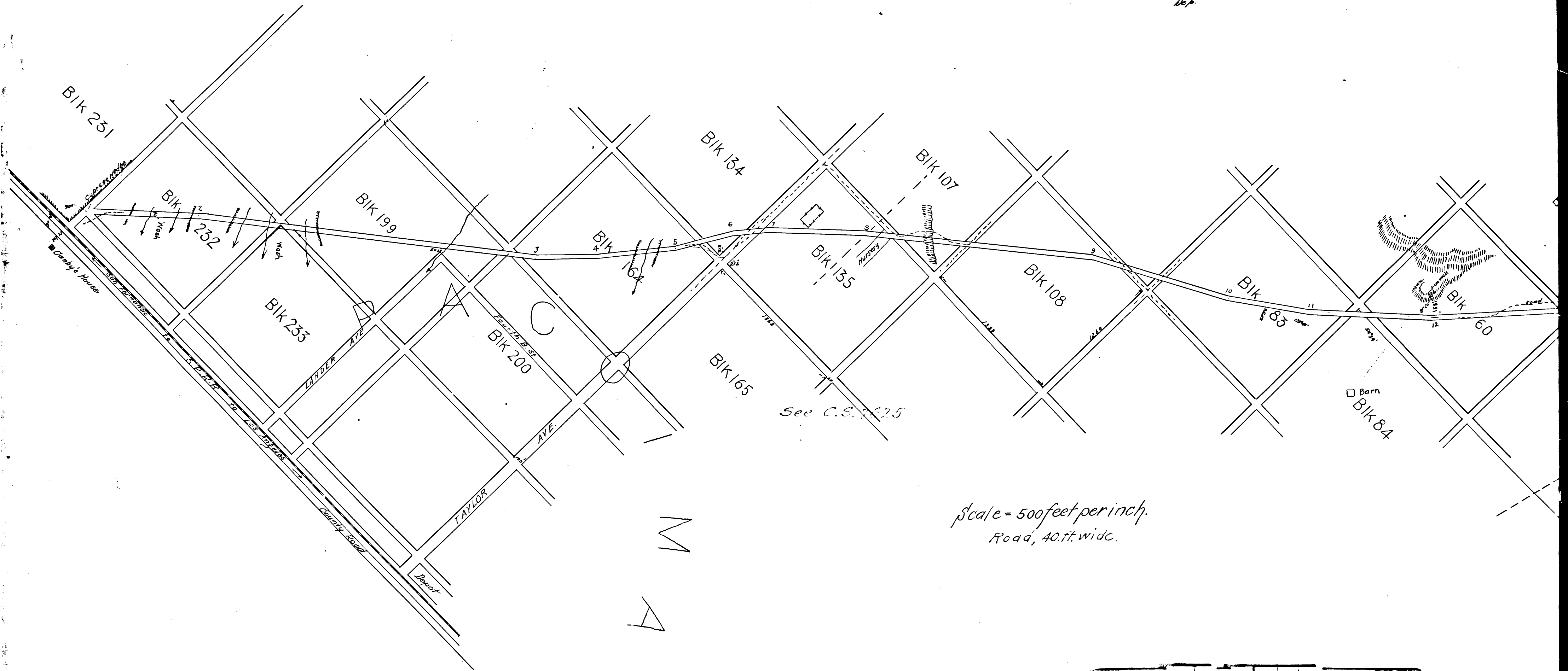
Filed April 17 1894

See R5-92

T. H. Ward, Clerk.

By C. W. Bell,
Dep.

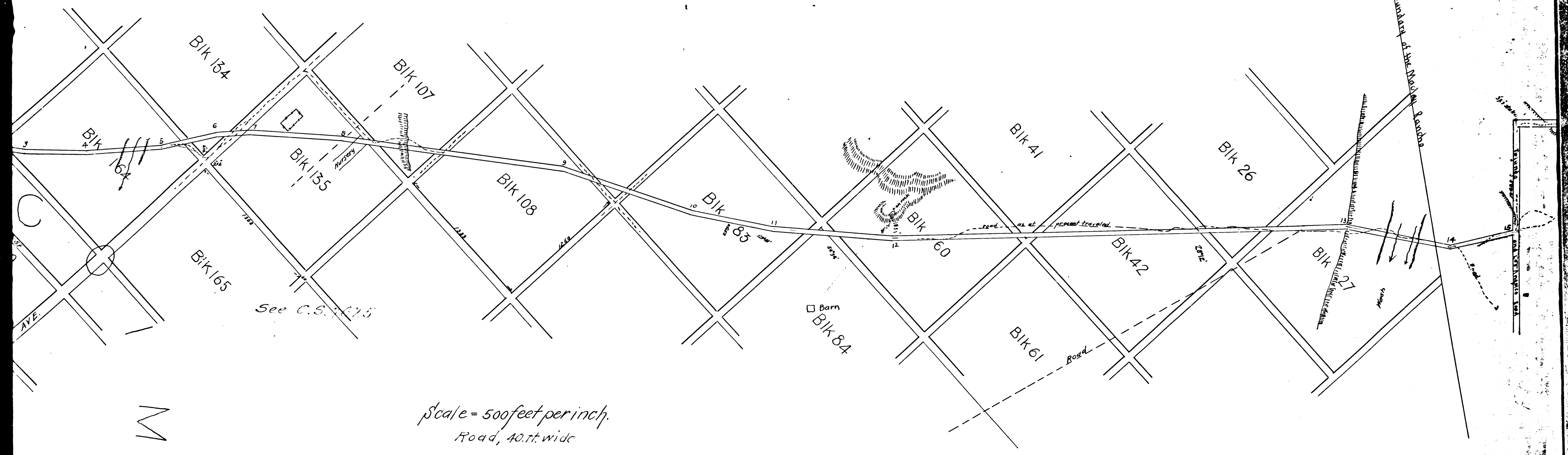
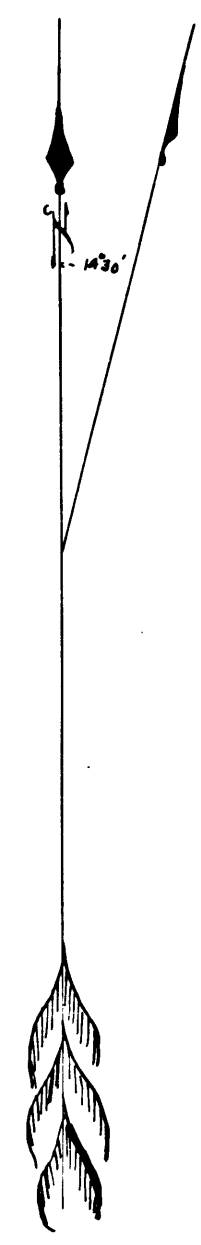
Sta	Course	Dist feet
C	N 48° 13' E	228.7
1	S 85° 30' E	1022.7
2	S 81° 12' E	2100.0
3	S 85° 38' E	550.0
4	N 86° 41' E	716.0
5	N 77° 21' E	526.7
6	N 85° 58' E	375.4
7	S 86° 15' E	858.1
8	S 82° 20' E	2100.0
9	S 71° 24' E	1322.8
10	S 75° 53' E	768.2
11	S 85° 51' E	1150.0
12	N 86° 21' E	434.1
13	S 74° 19' E	1000.0
14	N 76° 24' E	624.9
(North line)	(to 20.3 6 1/2)	



CS 6916
A 1 OF A 2

MAP
OF THE
San Fernando and Tejunga Road
surveyed under instructions from The
Honorable Board of Supervisors
OF
Los Angeles Co., Cal.
IN
San Fernando Road District
as surveyed by
A. R. Street, County Surveyor
April, 9-10,
1894
I.M. 53 C.S. 6916
See R.S. 92

Filed April 17 1894
T. H. Ward, Clerk.
By C. W. Bell,
Dep.



Scale = 500 feet per inch.
Road, 40 ft. wide

M
A

CS	6916	
A 2	OF	A 2