

BONESTELL TRACT

THE HERMITAGE



ALTADENA DR.

MAP

of a portion of  
~~SANTA ANITA AVE.~~

surveyed April 4, 1899

Jos. H. Smith, Co. Sur.

SCALE 100'-1" FIELD BOOK 80-87

C. S. 7021

and figures are from records

Block ... measurements on ground

I. M. 44

Santa Anita Ave. changed to Foothill Blvd. - E-4 3d Ord. 2158, City of Pasadena

Foothill Blvd. changed to North Foothill Blvd. - E-4 1st Ord. 2191

PHILIPP ENGEL  
M.R. 42-87

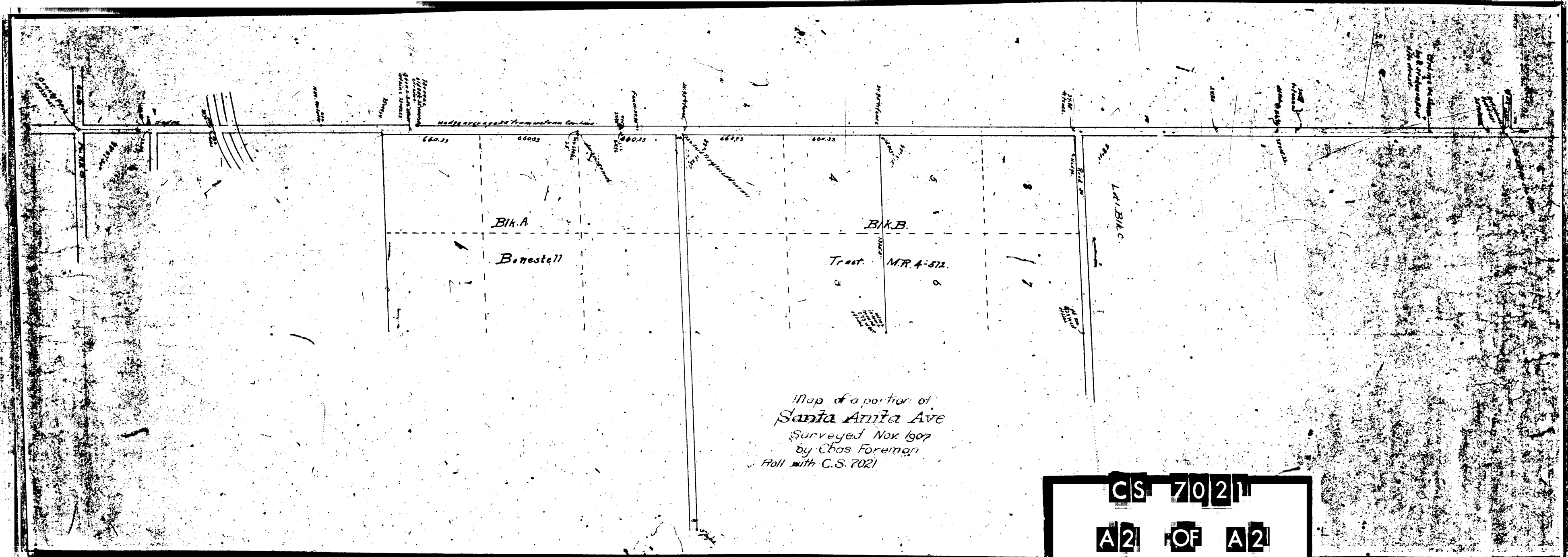
FOOTHILL BLVD.

COUNTY ROAD

7	6
5	8
LEONARD ARBETTER'S	
3	8
2	9
1	10

PUBLIC SCHOOL

CS	7021	
A1	OF	A2



Map of a portion of  
*Santa Anita Ave*  
Surveyed Nov 1907  
by Chas Foreman  
Roll with C.S. 7021

CS 7021  
A2 OF A2