

MAP

SHOWING COMPROMISE LINE AS FINALLY AGREED BETWEEN COUNTY FARM & JOHNSTON PLACE
SURVEYED BY ORDER OF DIST. ATTORNEY MAY 1900

JOS. H SMITH CO. SUR.

F. B. 21-55

SCALE 3/4" = 100'

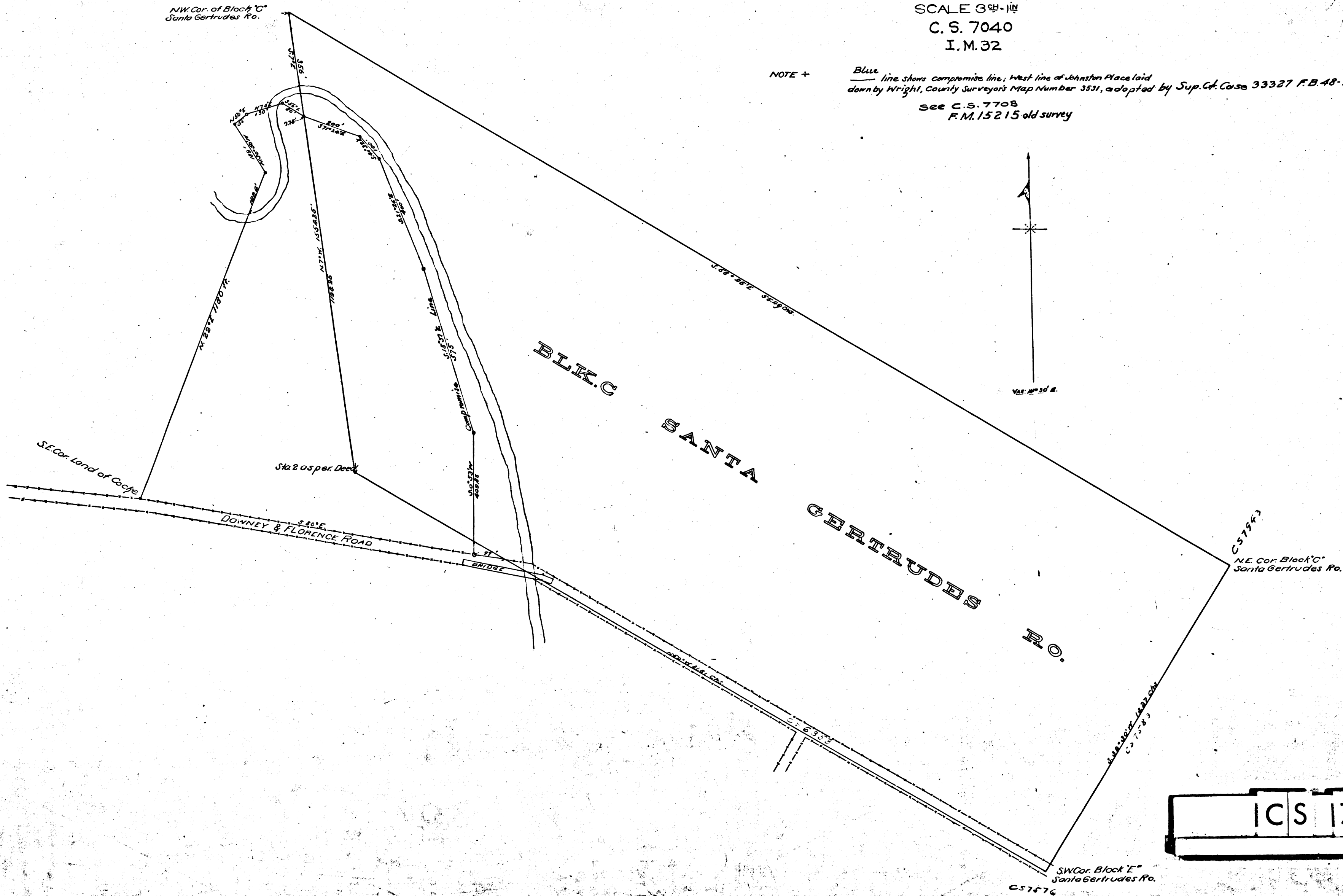
C. S. 7040

I. M. 32

NOTE +

Blue line shows compromise line. West line of Johnston Place laid down by Wright, County Surveyor's Map Number 3531, adopted by Sup. Ct. Case 33327 F. B. 48-75.

See C. S. 7708
F. M. 15215 old survey



ICS 17040