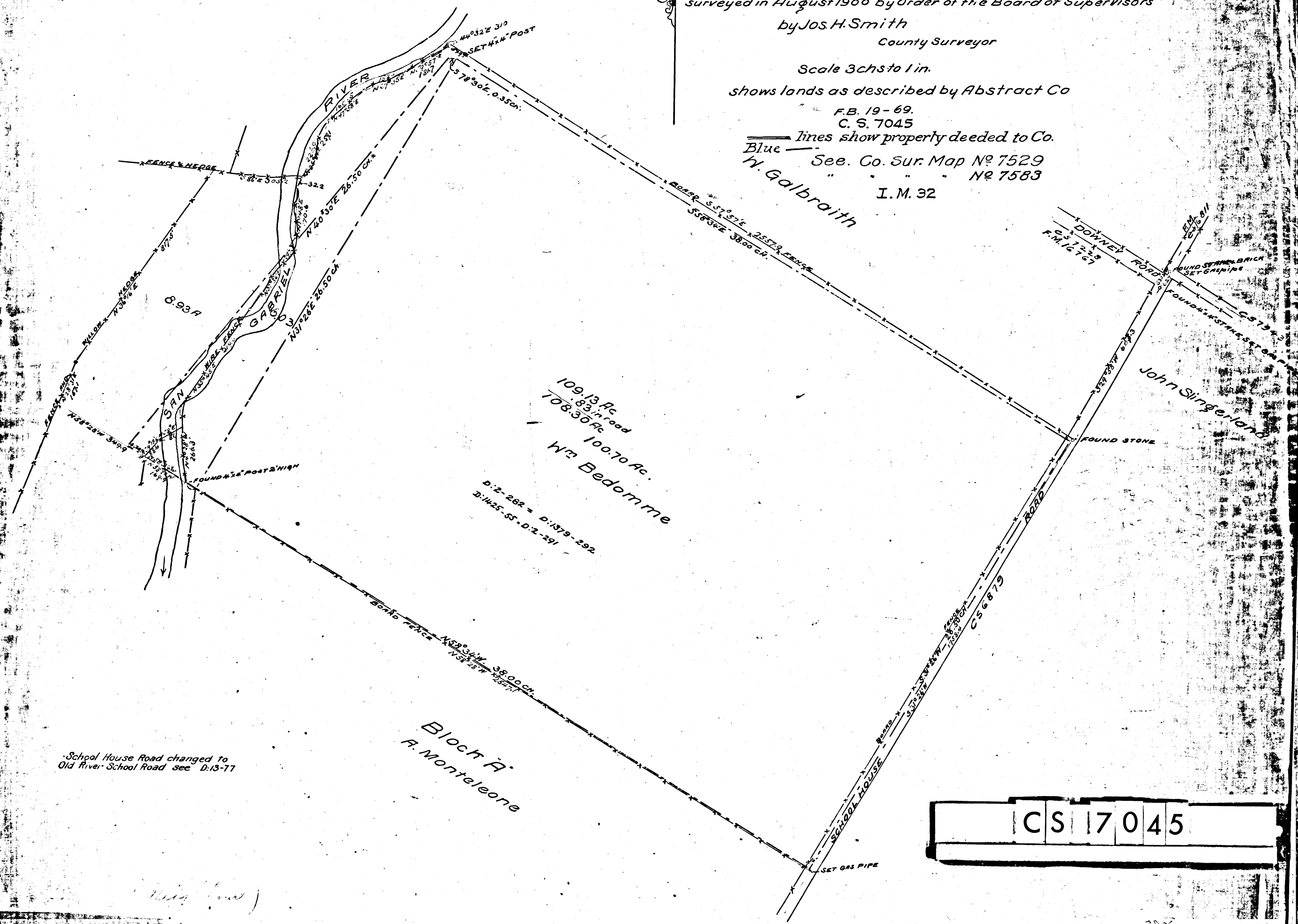


Lands of Wm. Bedomme in
Rancho Santa Gertrudes
surveyed in August 1900 by Order of the Board of Supervisors
by Jos. H. Smith
County Surveyor

Scale 3chs to 1 in.
shows lands as described by Abstract Co
F.B. 19-69.
C. S. 7045
Blue lines show property deeded to Co.
See. Co. Sur. Map No 7529
W. Galbraith
No 7583
I. M. 32



109.13 Ac
89.17 Ac
708.30 Ac
100.70 Ac.
Wm Bedomme

D:2-282 = D:1319-282
D:1425-55 = D:2-291

Block A
A. Monteleone

School House Road changed to
Old River School Road see D:13-77

CS 7045