

**WILMINGTON ST. EXTENSION**  
*from the Dominguez Colony Tract Rancho San Pedro  
to American Ave Ro. Los Cerritos*  
*Surveyed Nov. 1900 by order of the board of Supervisors by*

*Jos. H. Smith County Surveyor*

*true Course Var 14° 30' E.*

*Field Book 22 P. 22*

*Scale 200ft = 1in.*

*Road 40ft wide*

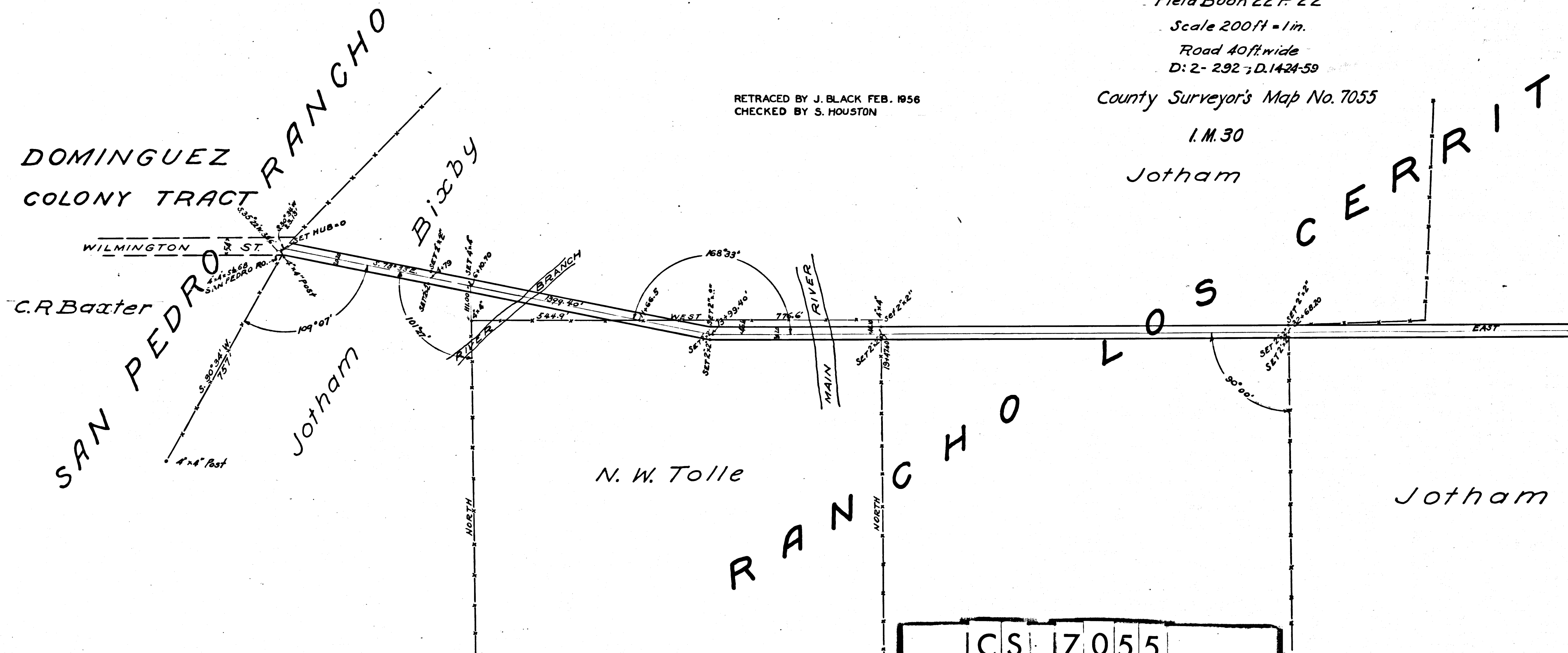
*D: 2-292; D. 1424-59*

*County Surveyor's Map No. 7055*

*I. M. 30*

*Jotham*

RETRACED BY J. BLACK FEB. 1956  
CHECKED BY S. HOUSTON



CS	7	0	5	5
A	1	OF	A	2

# INGTON ST. EXTENSION

uez Colony Tract Rancho San Pedro

rican Ave Ro. Los Cerritos

by order of the board of Supervisors by

H. Smith County Surveyor

true Course Var  $14^{\circ}30'E$ .

Field Book 22 P. 22

Scale 200ft = 1in.

Road 40ft wide

D: 2-292; D. 1424-59

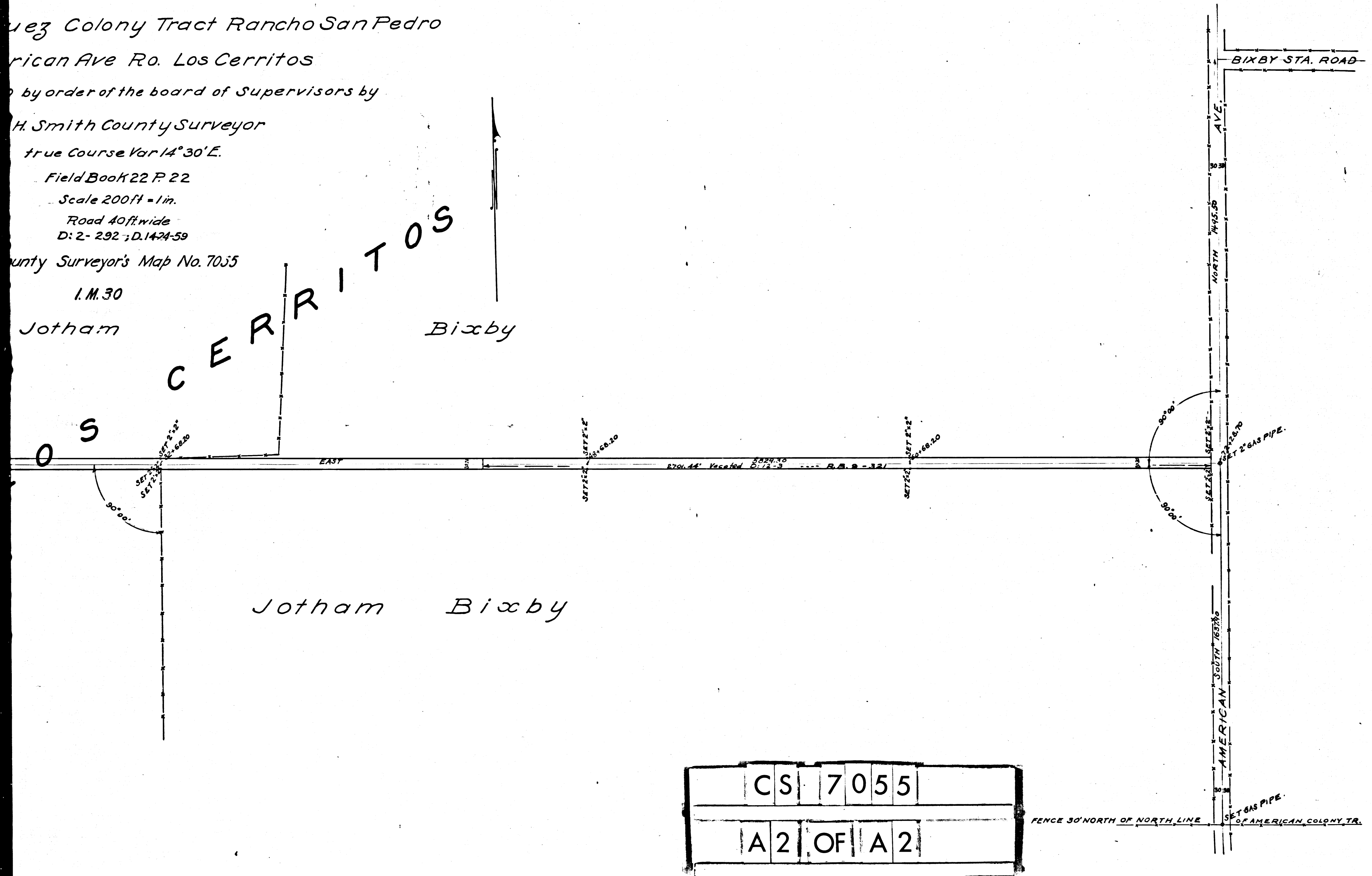
County Surveyor's Map No. 7055

I.M. 30

Jotham

CERRITOS

Bixby



CS	7	0	5	5
A	2	OF	A	2

FENCE 30' NORTH OF NORTH LINE