

MAP
OF
THE PROPOSED EXTENSION OF

SANTA GERTRUDES ROAD
IMPERIAL HY.

ALONG THE NORTH LINE OF BLOCK 'N' AND BETWEEN
BLOCKS 'H' & 'F' - 'G' & 'E' SANTA GERTRUDES RANCHO

SURVEYED FEB. 1901. SCALE: 1" = 100'

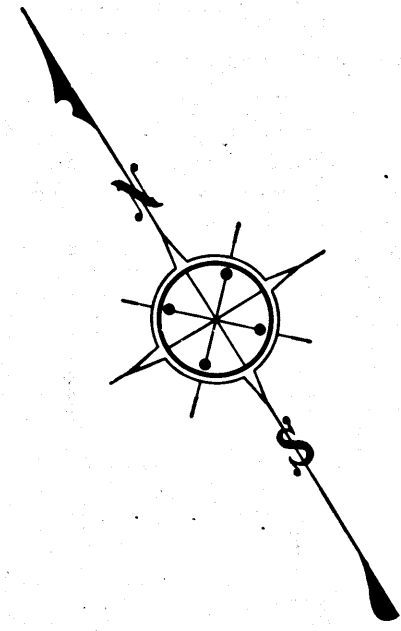
J.H. Smith - COUNTY SURVEYOR
County Surveyors Map No 7064

L.B. NO. 3-3 & 4

SHT. NO. 32
33

Declared a public highway 40' wide along the S 1/4 line of Blk. F - D: 17-244 R.B. 13-370
N 1/4 Blks. H and N - D: 17-281 R.B. 14-60
Santa Gertrudes Road changed to Imperial Highway - D: 49-97

J. H. Smith
Wm M^c Cormack } VIEWERS
W. H. Hall



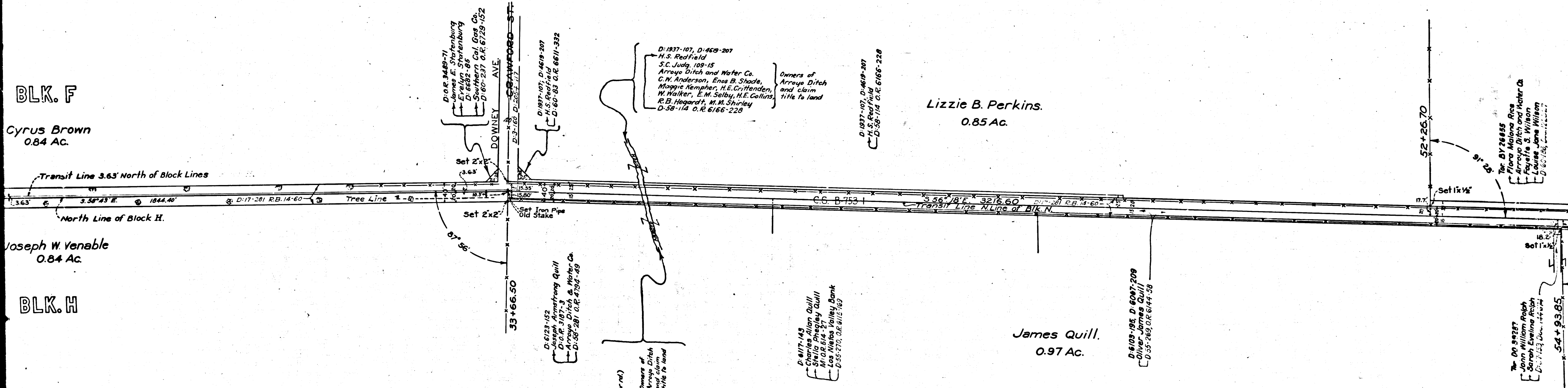
BLK. F
Cyrus Brown
0.84 Ac.

BLK. H
Joseph W. Venable
0.84 Ac.

Lizzie B. Perkins.
0.85 Ac.

James Quill.
0.97 Ac.

BLK. N



CS 7064
A2 OF A3