

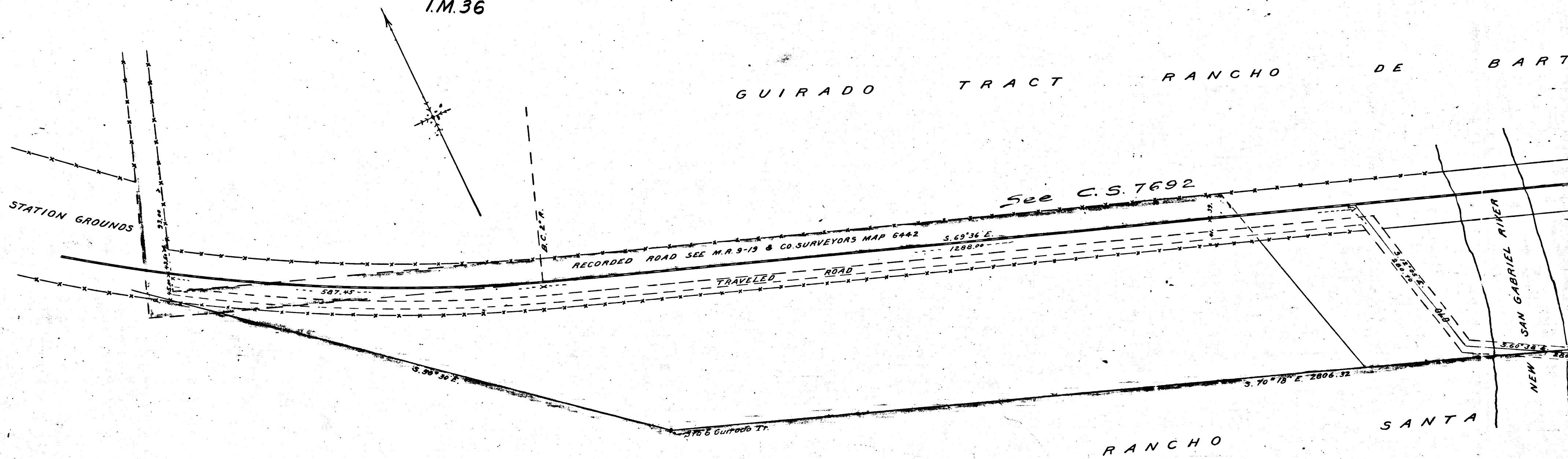
*SURVEY OF LOS NIETOS ROAD*

*from station grounds at Rivera to east line  
Guirado Tract*

*J.H. Smith Co. Sur Scale 1 in = 100 ft.  
F.B. L. 4-19*

C. S. 7080

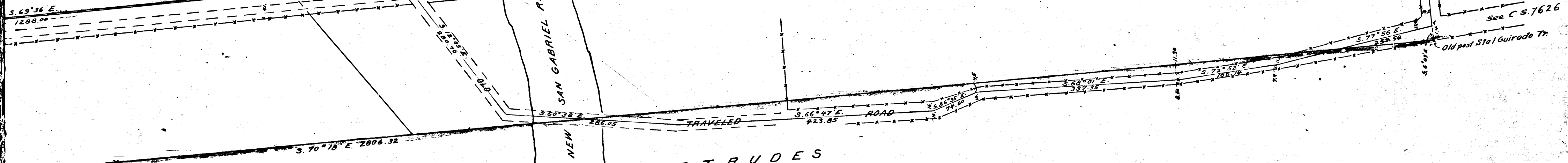
I.M. 36



CS	7	0	8	0
A	1	OF	A	2

TRACT RANCHO DE BARTOLO VIEJO

See C.S. 7692



RANCHO

SANTA

GERTRUDES

CS	7080
A2	OF A2