

MAP

Showing a portion of

~~BEN LAMOND AVE~~  
BARRANCA AVE  
1/11 Section 36, T.1N.10W.

Surveyed by order of Board of Supervisors Jan. 22, 1903.

Scale 300ft. = 1 in. Leo Youngworth Co. Sur. Var. 14° 30' E.

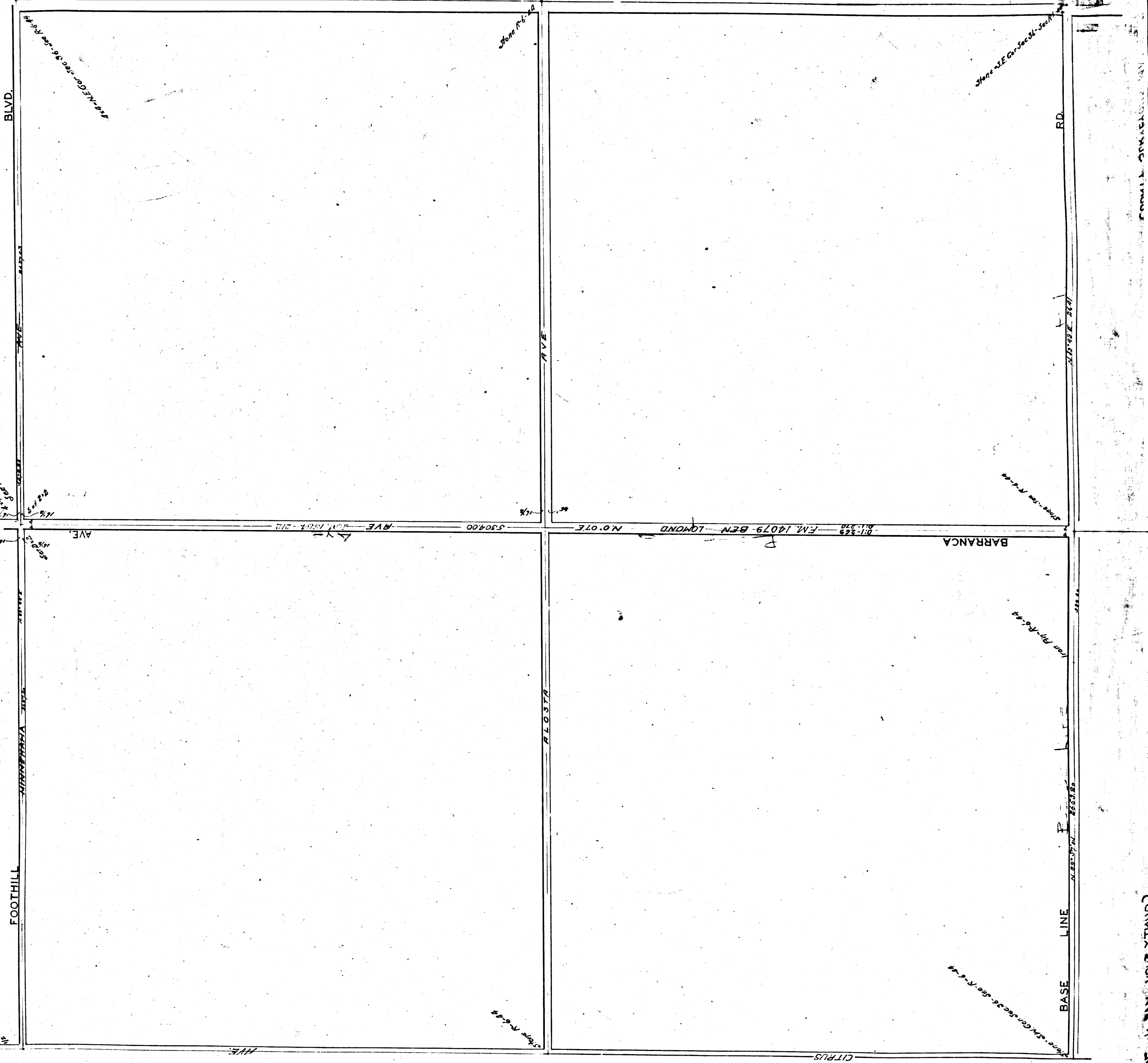
F. B. 24-12.

R. 6-44.

C. S. 7097

I. M. 47

Minnehaha Ave changed to Foothill Blvd. D. 19-28



CS 7097

1903-04 1/11 36 T.1N.10W