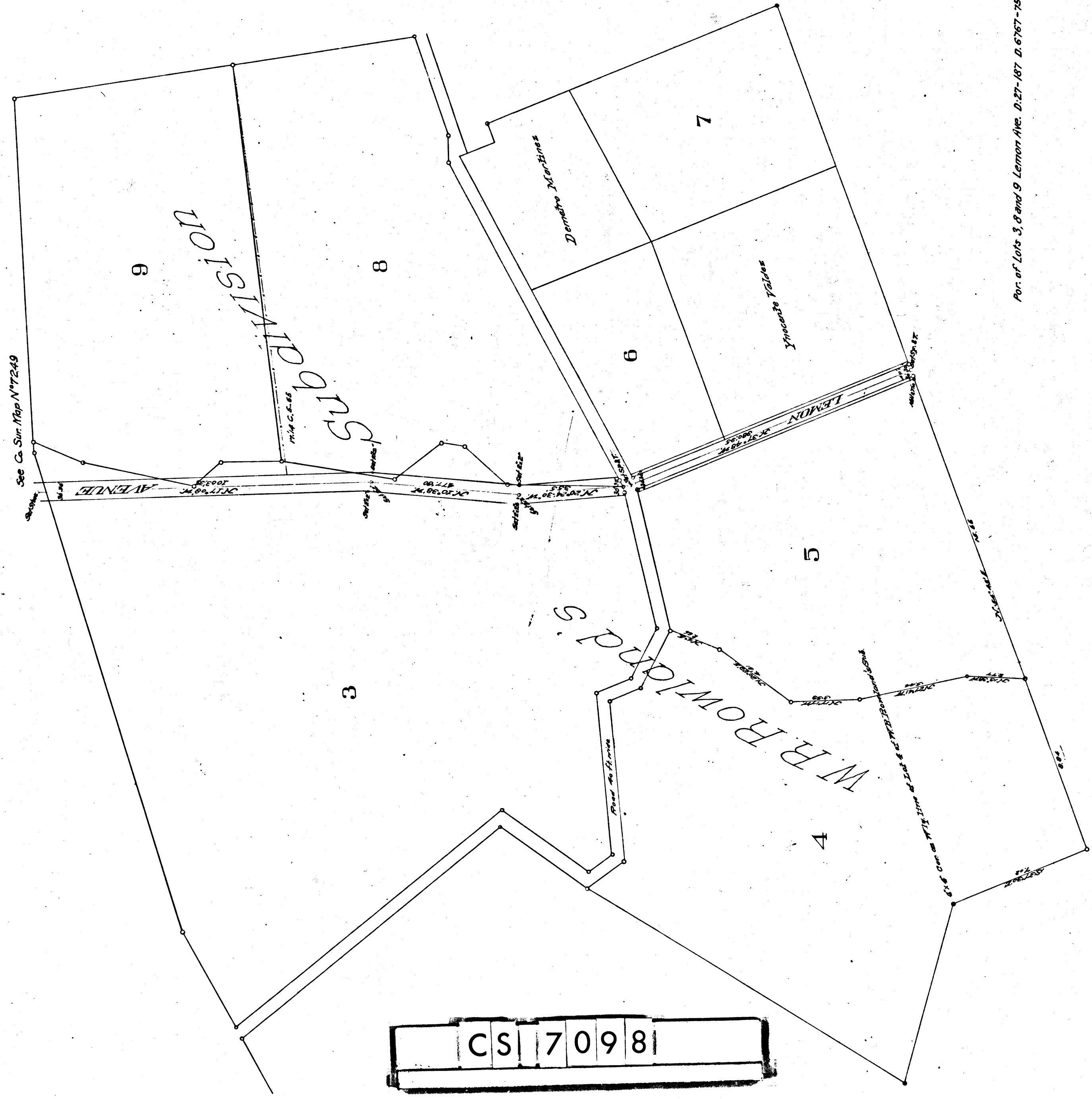


MAP
of charge in
LEMON AVENUE

in
W.F. Rowland's Subdivision
of a
Portion of Rancho La Puente
As shown in M.E. 42, pp. 79, 80.
Surveyed February, 1903
by
Leo V. Youngworth, County Surveyor

Scale 3 chains = 1 inch
C. S. 7098
I. M. 39
F.B. 55-9, 10



Por. of Lots 3, 8 and 9, Lemon Ave. D. 27-187 D. 6767-75