

CS 7099

MAP

Showing changes in the  
Puente <sup>1/2</sup> Spadera Road

From Sta. Bas shown on C.S. Map # 4140

I. V. Young & Co., Stuz.

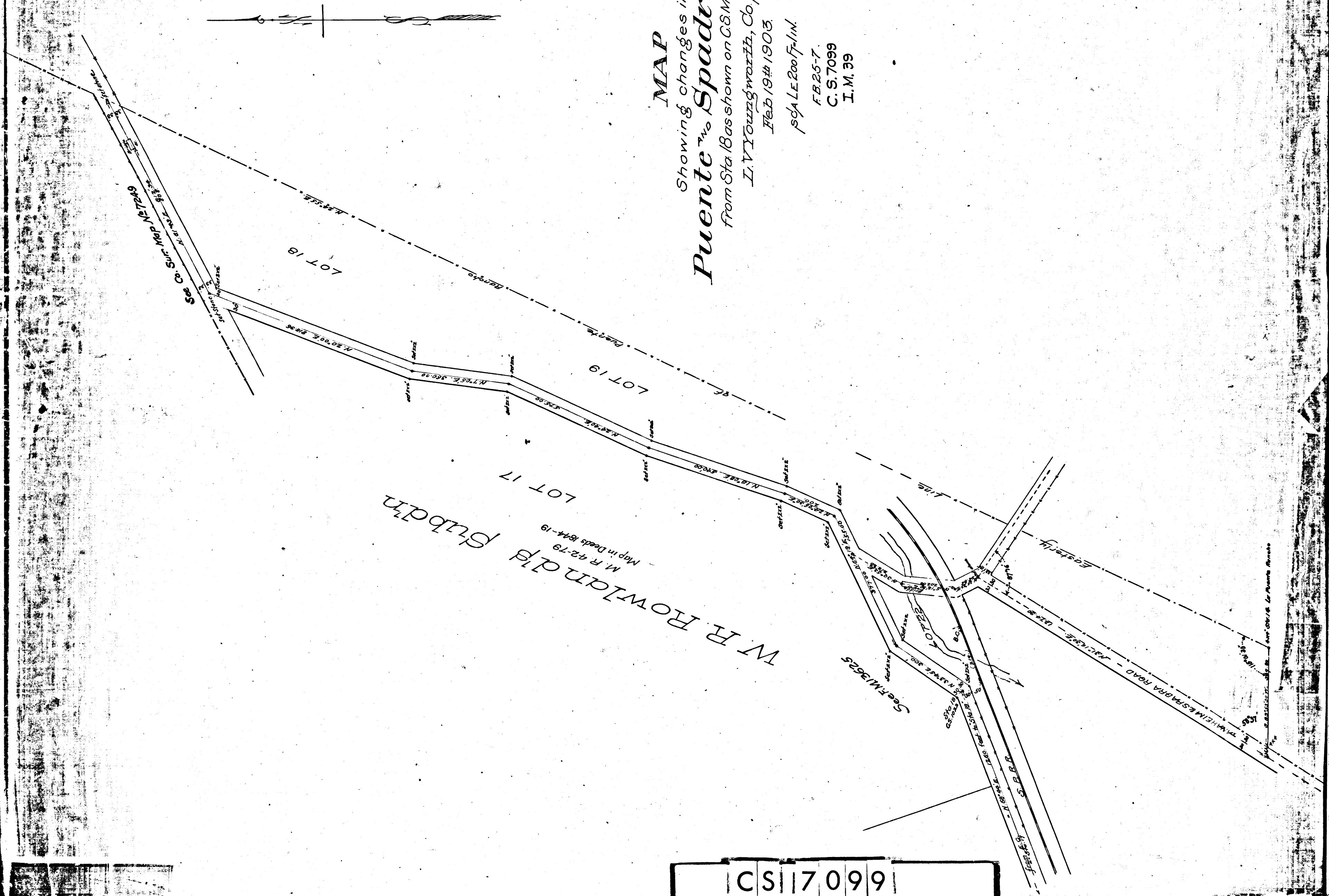
Feb. 19# 1903.

Scale 1/2" = 100'

F.B. 25-7.

C. S. 7099

I. M. 39



W. R. ROWLAND'S Subdn  
M. R. 42-79  
Map in Deeds 1844-19

See Co. Surv. Map No. 249

See M. 3625