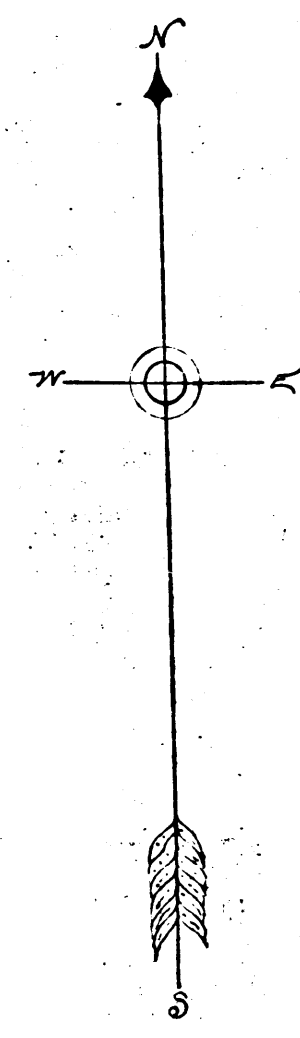
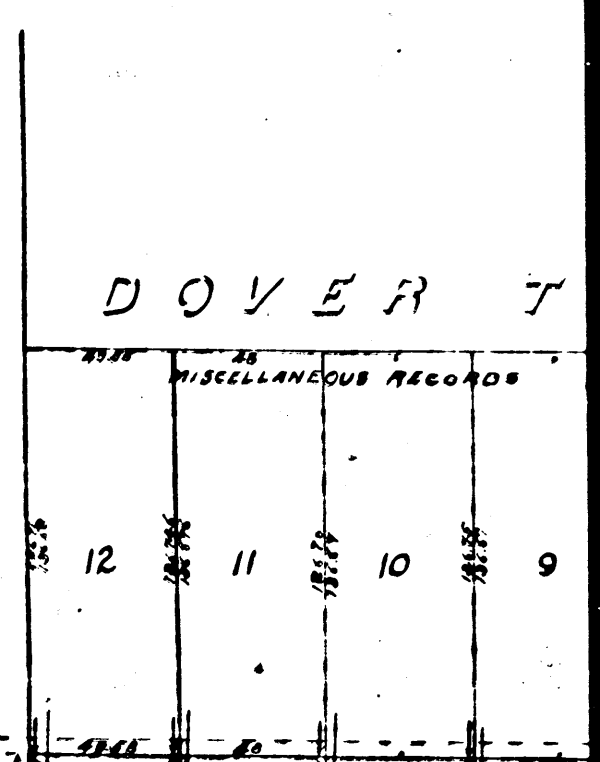
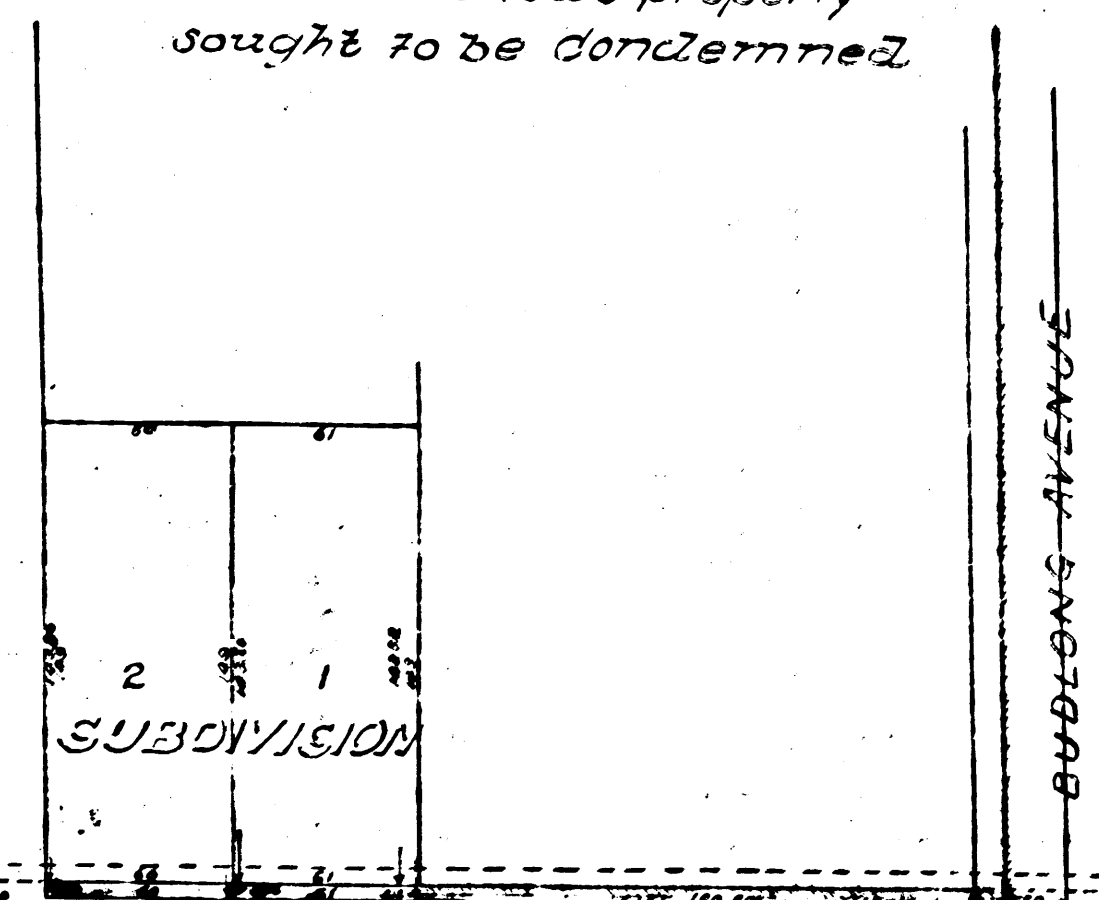
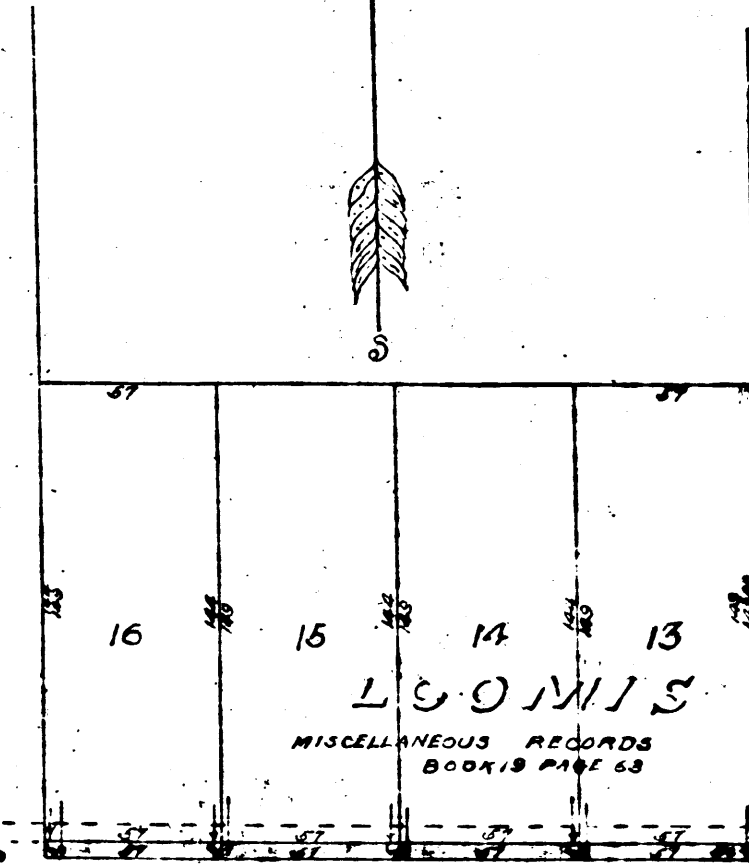
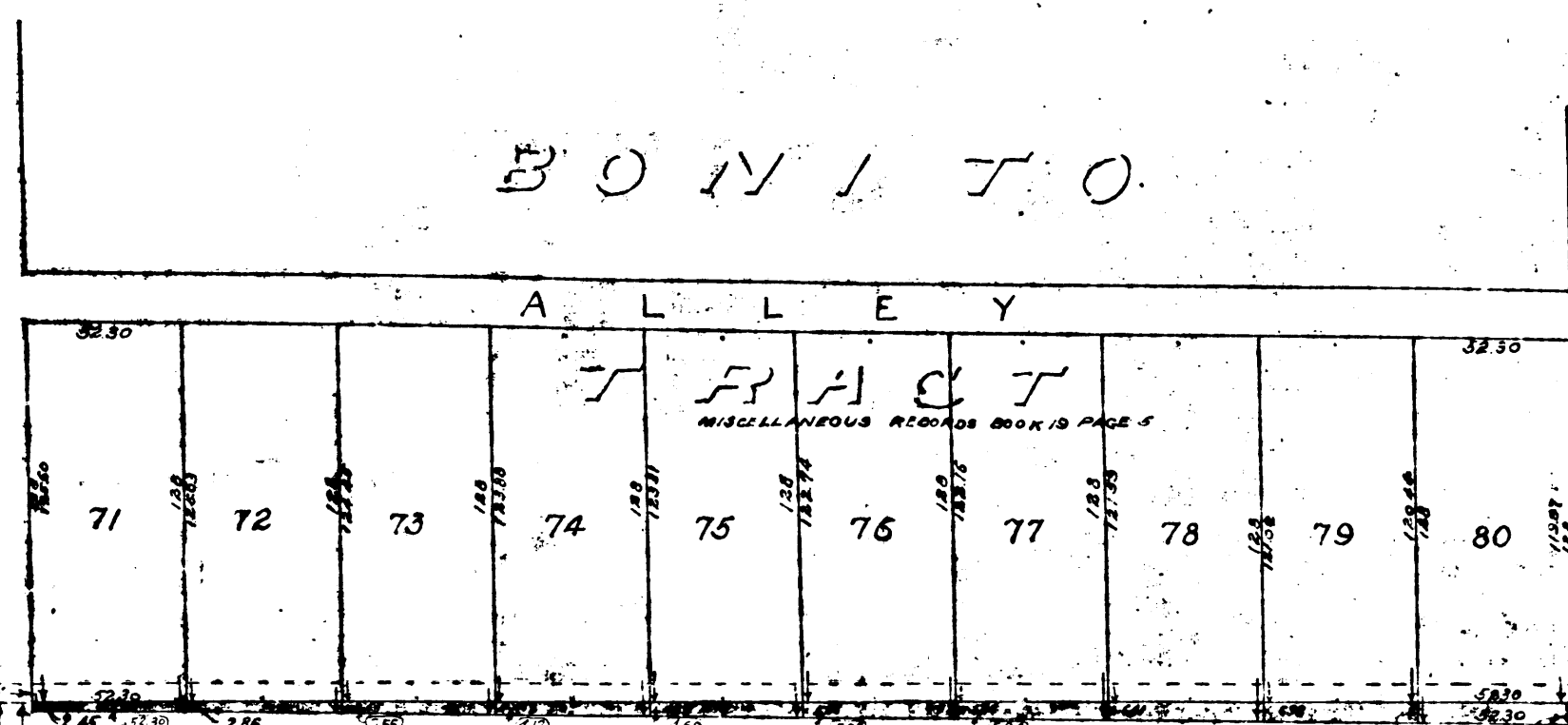


opening
TWENTY
 Vermont Avenue
 COUNTY SUR
 See also C

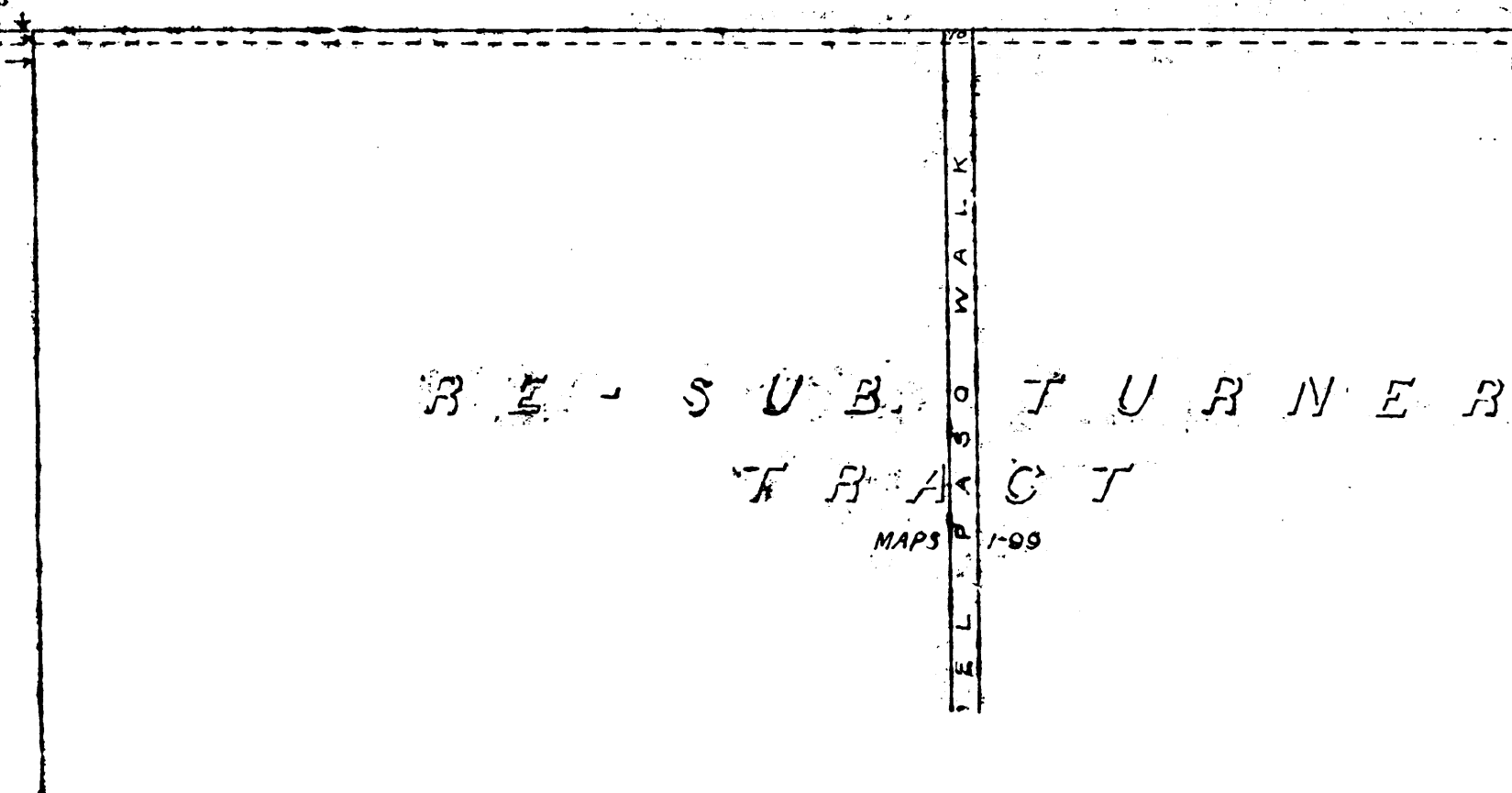


Note, (Blue shading on this print within strip along North line)
 Red ~~line~~ shows property
 sought to be condemned.

NORMAN D I E



T W E N T Y S E C O N D



PATERSON

LEOTI AVENUE

TRACT

COOK

BUDBLONG AVENUE

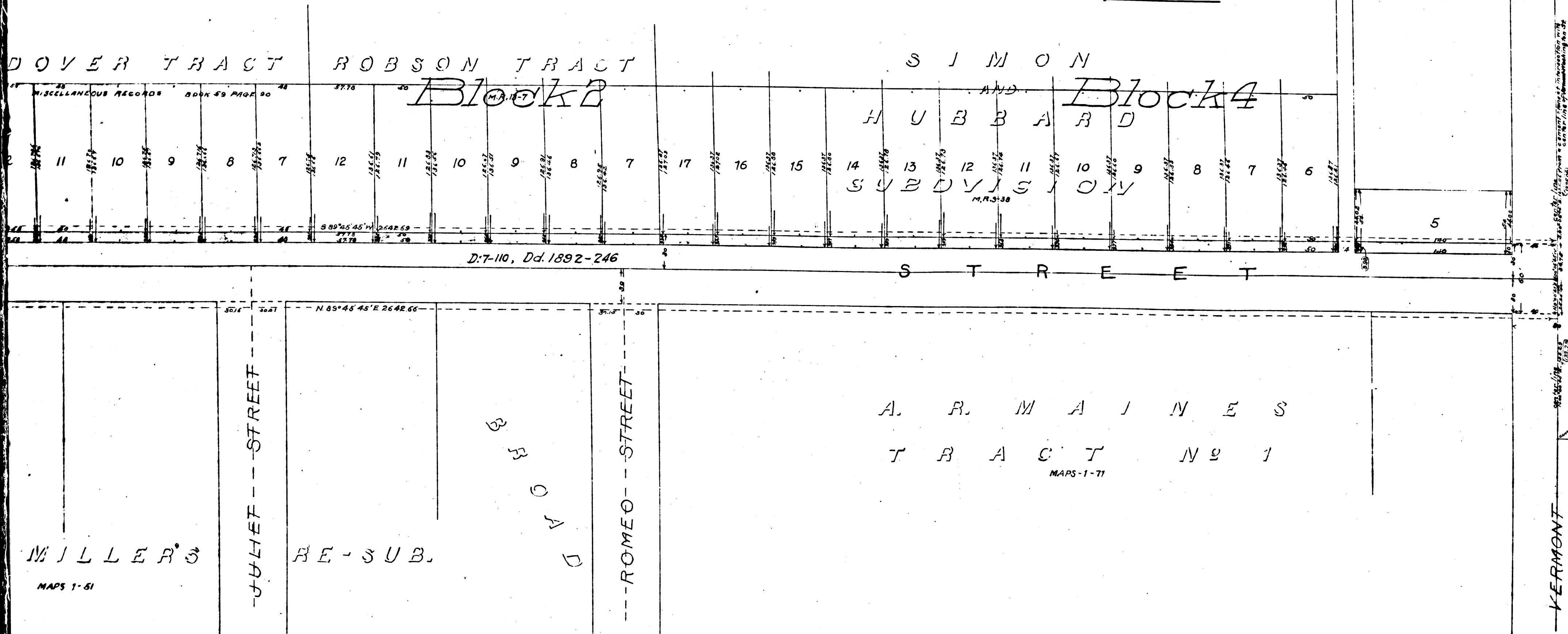
AND MILLER'S

CS	7	1	2	7
A	1	OF	A	2

opening and widening of
WENTY SECOND STREET
 between
 Mont. Avenue and Normandie Avenue
 January 1904

COUNTY SURVEYORS MAP NO. 7127
 T. 1 S. - R. 14 W.
 See also County Surveyors Map No 6890
 I. M. 9

City of Los Angeles
 vs.
 B. W. Day et al.
 Superior Court, Case 39872
 Judgement for Plaintiff
 Filed Oct 28, 1902.
 See D:7-110, Dd. 1892-246
 For Final Judgment.



CS	7127
A2	OF A2