

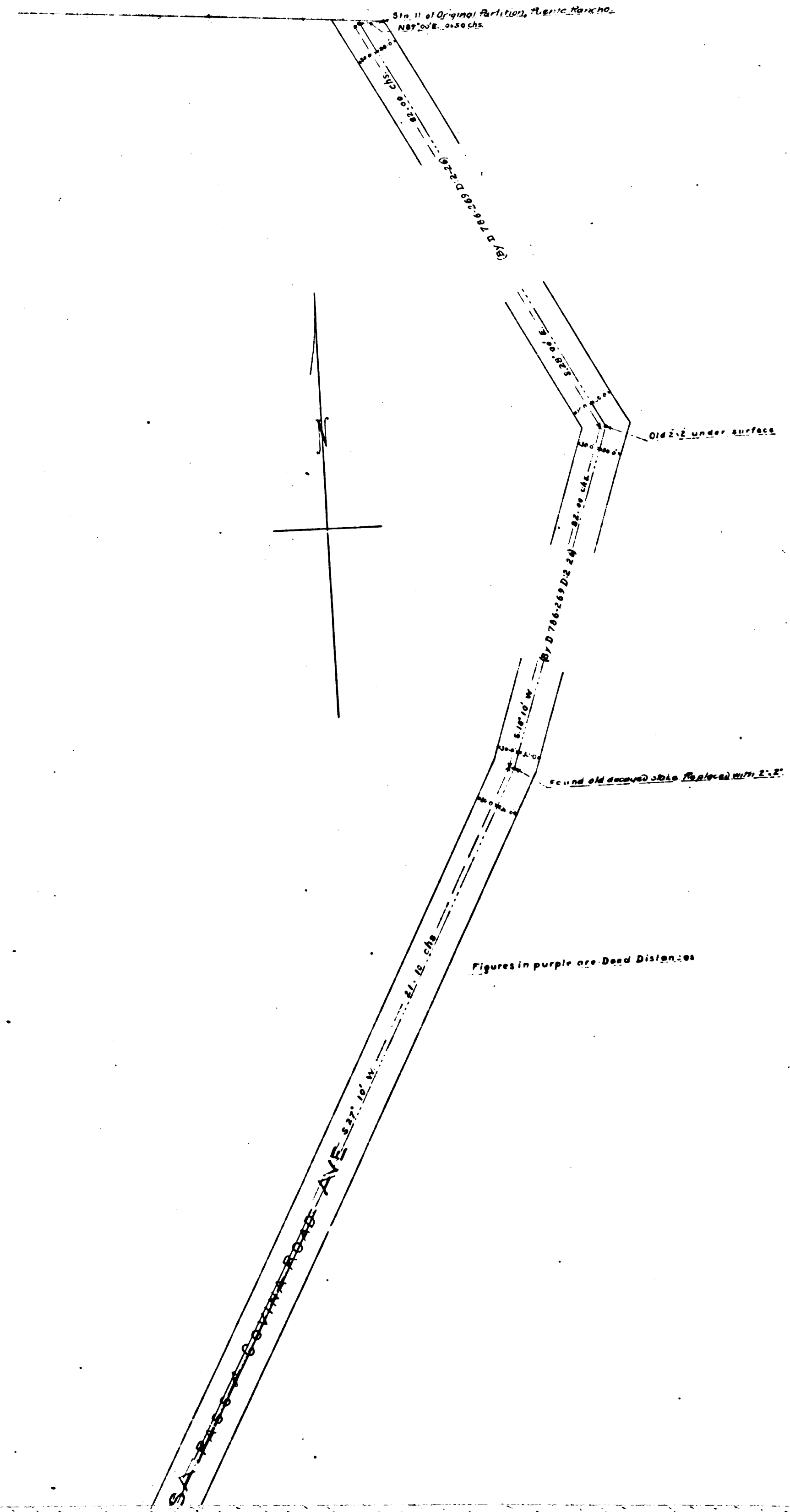
AZUSA AVE.
 FOR LATER SURVEY
~~PASS & COVINA ROAD~~
 SEE C.S.B. 2628 & 2949
 North from Puenle - Spadra Road
 Los Angeles Co March 1904
 Leo V. Youngworth Co Sur

Scale 1" = 100'
 LB 11-7

Note - Figures in purple thus (2110chs) are record distance
 Reference is made to Rec. of Sur. 4-282.

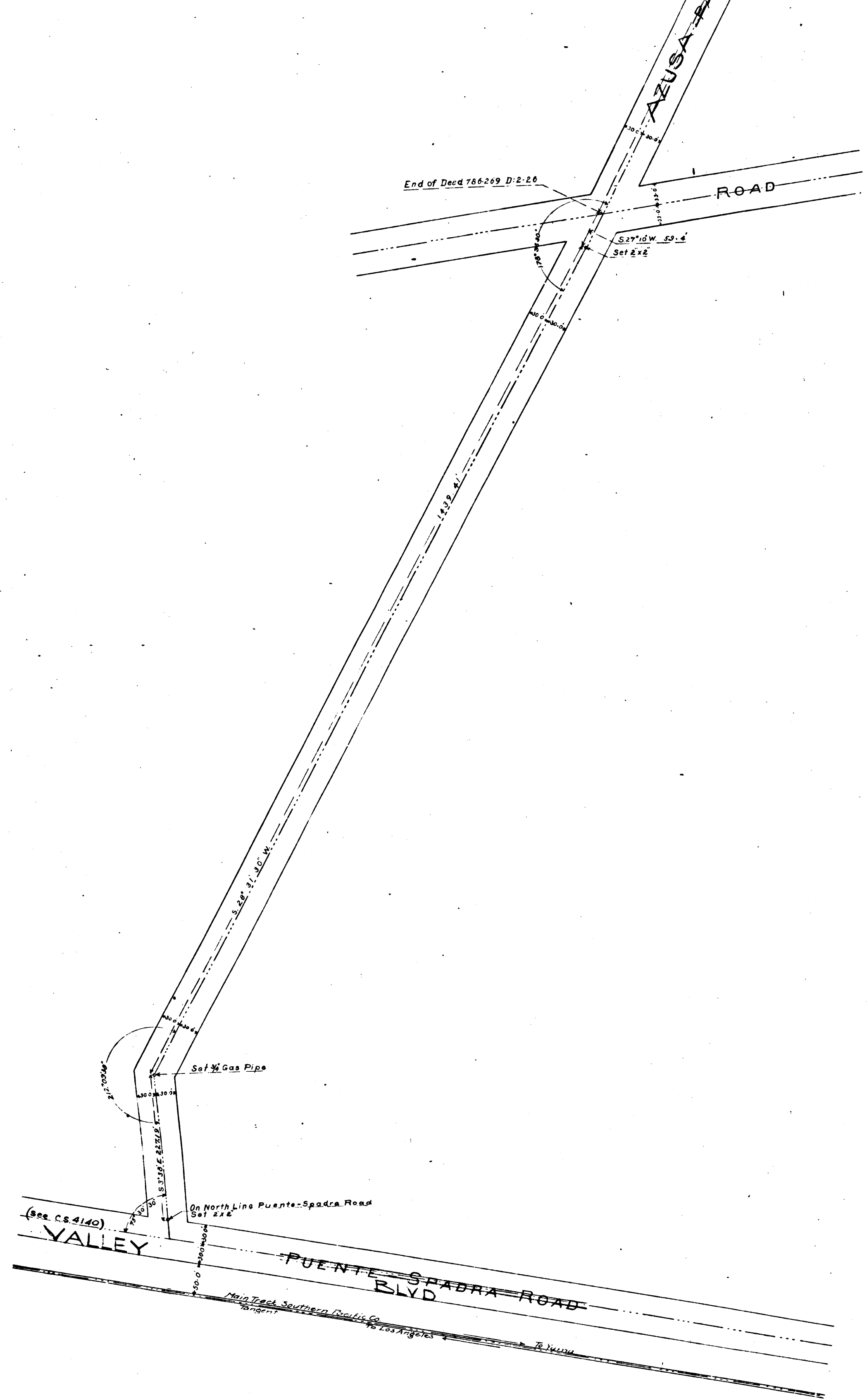
I.M. 38

COUNTY SURVEYORS MAP NO 7152



Figures in purple are Deed Distances

CS	7152
A1	OF A2



CS	7152
A2	OF A2