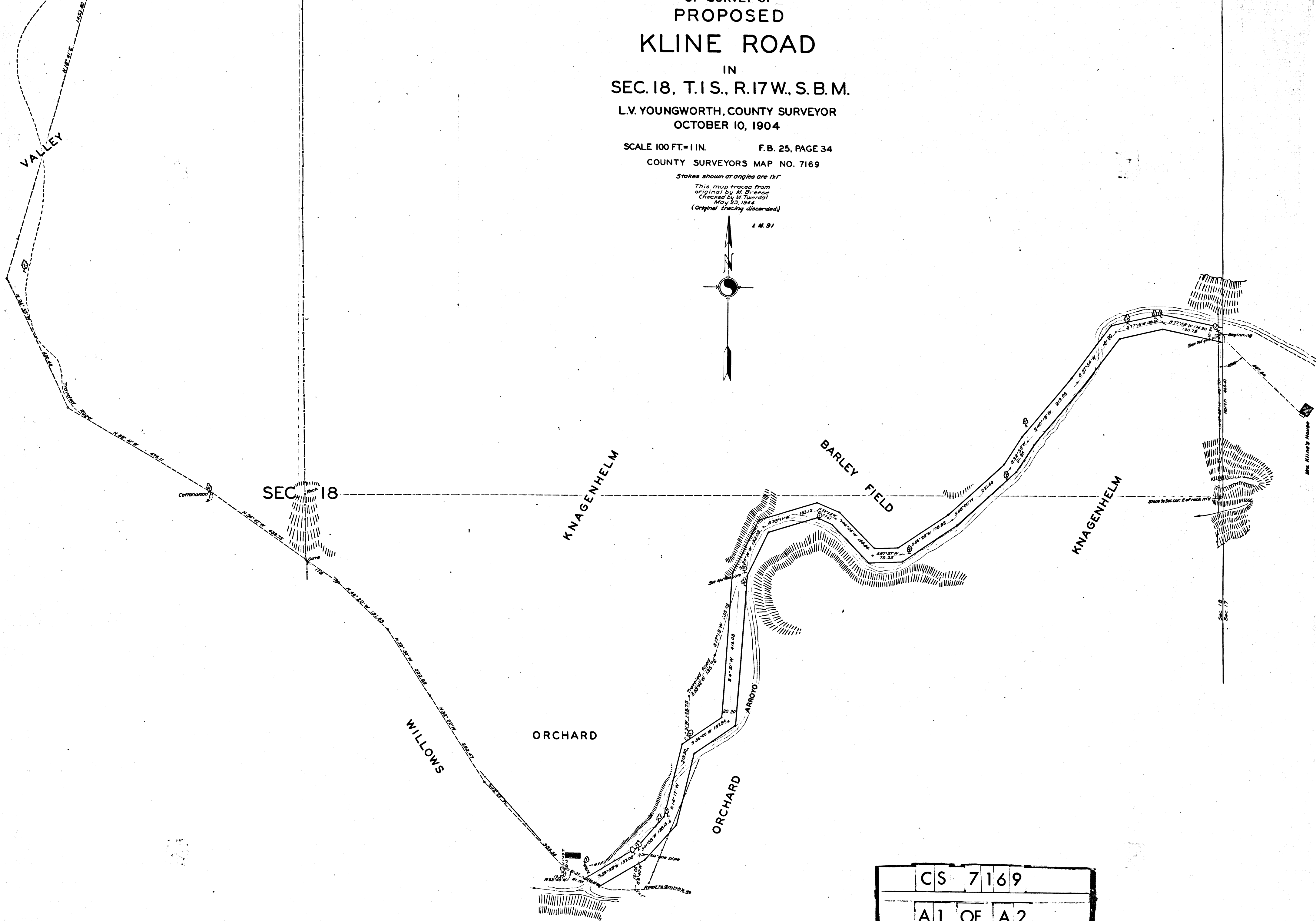
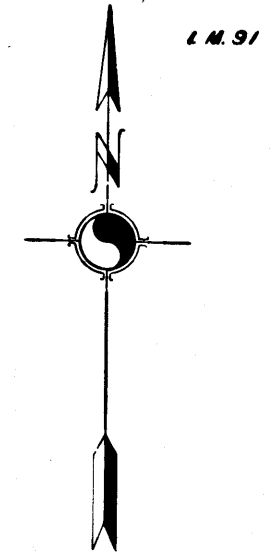


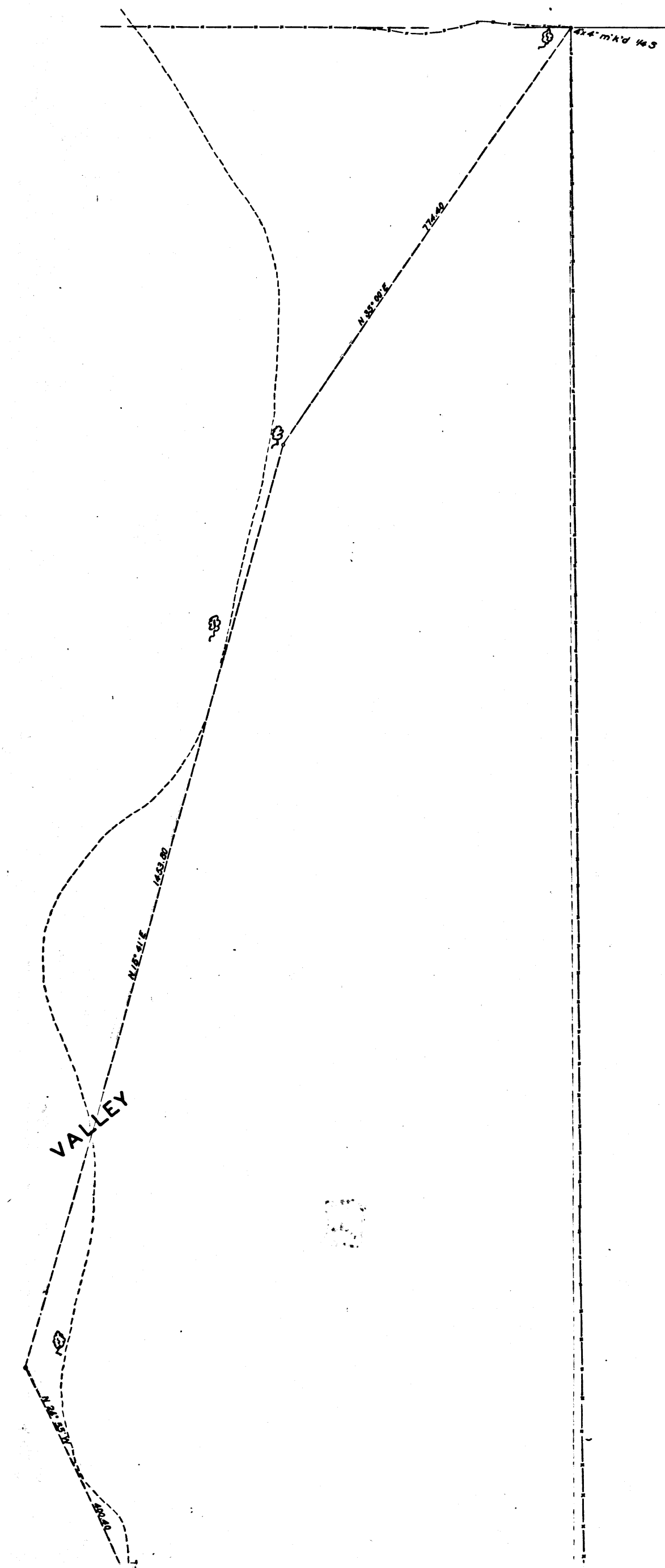
OF SURVEY OF
**PROPOSED
 KLINE ROAD**
 IN
 SEC. 18, T. 1 S., R. 17 W., S. B. M.
 L.V. YOUNG WORTH, COUNTY SURVEYOR
 OCTOBER 10, 1904

SCALE 100 FT. = 1 IN. F. B. 25, PAGE 34
 COUNTY SURVEYORS MAP NO. 7169

Stakes shown at angles are 1x1"
 This map traced from
 original by M. E. Reese
 Checked by M. Twerdal
 May 23, 1944
 (Original tracing discarded)



CS	7169
A1	OF A2

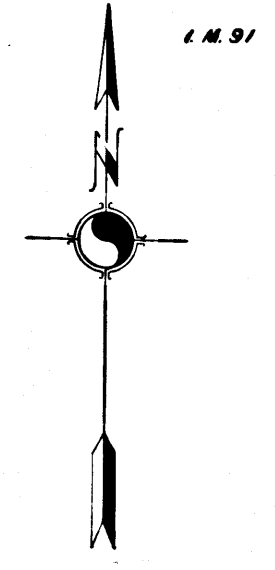


N.E. Cor. Sec. 18

MAP
 OF SURVEY OF
 PROPOSED
KLINE ROAD
 IN
 SEC. 18, T. 1 S., R. 17 W., S. B. M.
 L.V. YOUNGWORTH, COUNTY SURVEYOR
 OCTOBER 10, 1904

SCALE 100 FT. = 1 IN. F. B. 25, PAGE 34
 COUNTY SURVEYORS MAP NO. 7169

Stakes shown at angles are 1/2"
This map traced from
original by M. E. Reese
Checked by M. Tuerdai
Nov. 23, 1944
(Original tracing discarded)



CS	7169
A 2	OF A 2

