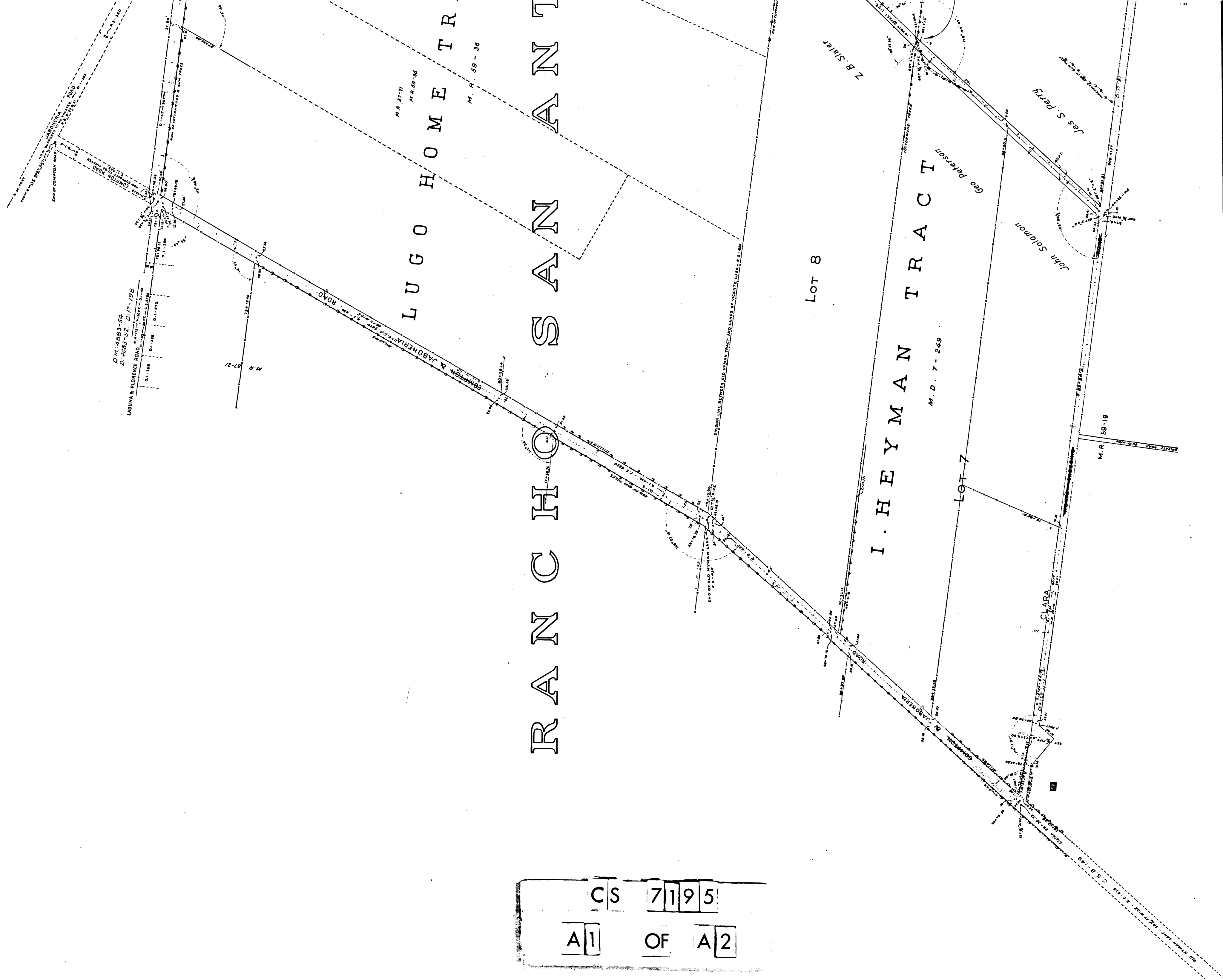


CS 7195  
A1 OF A2

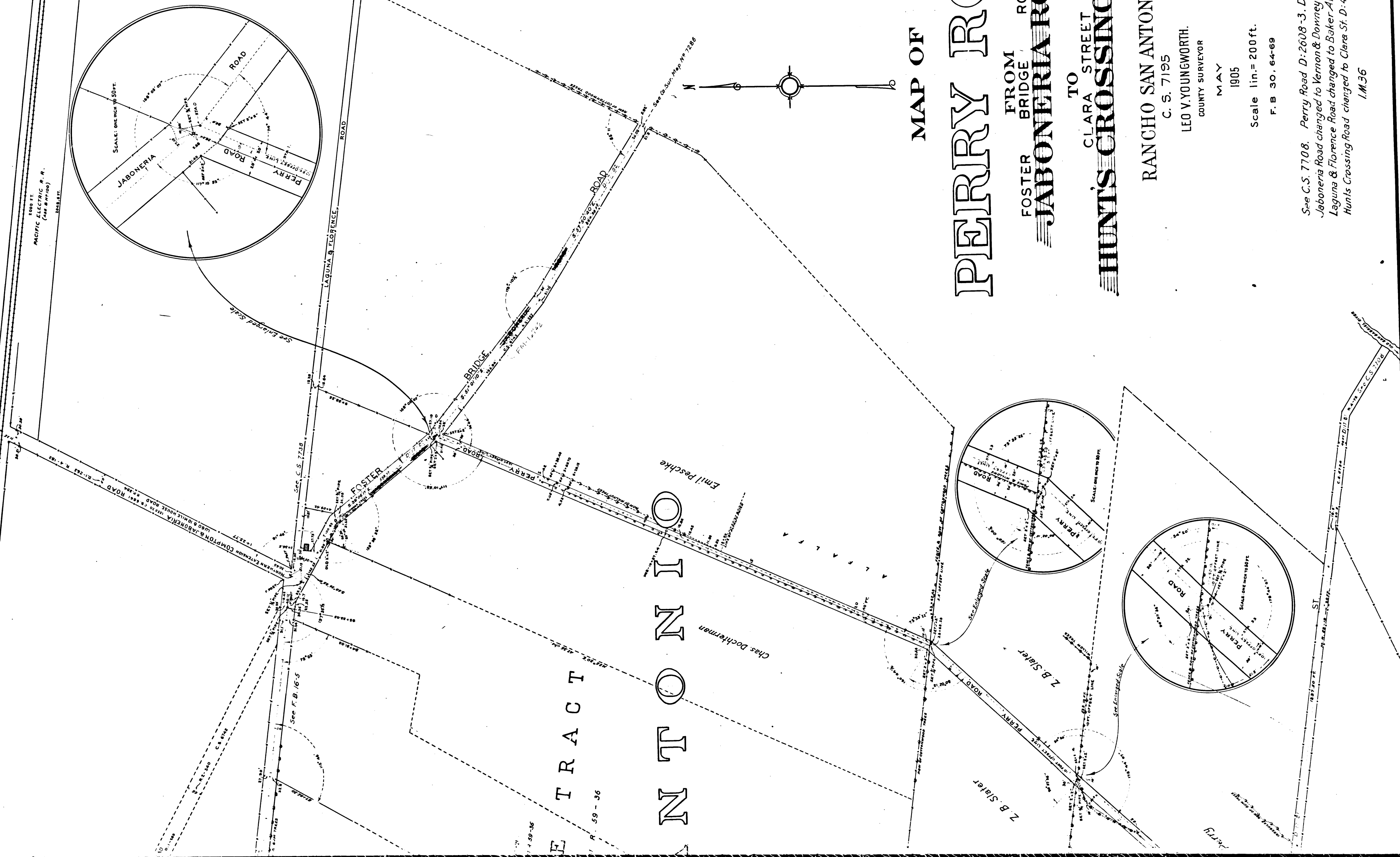
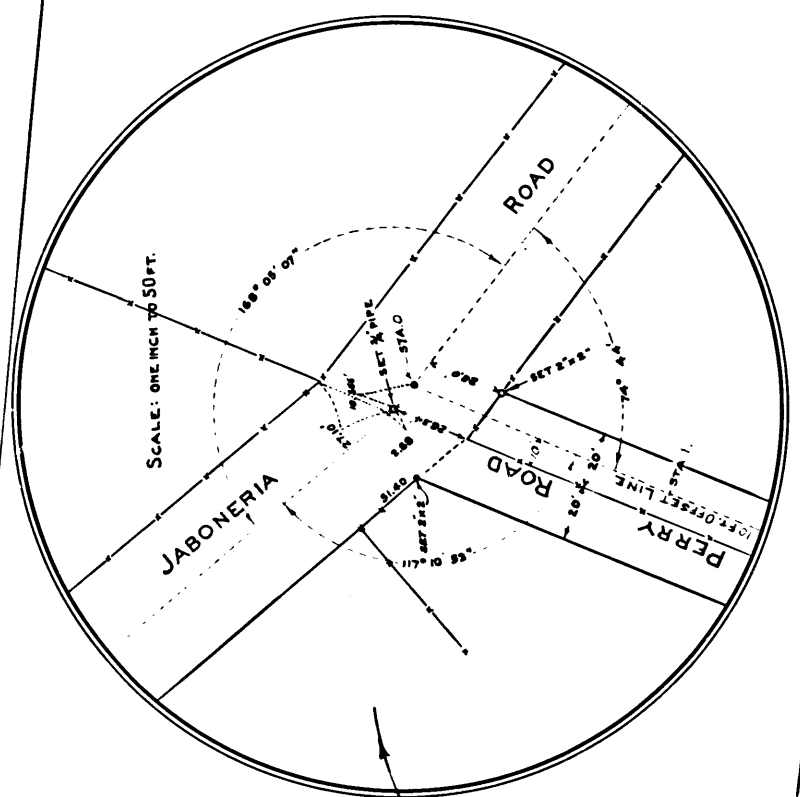
# RANCHO SAN JUAN

## LUGO HOME TRACT

## I. HEYMAN TRACT



CS 7195  
 A2 OF A2



MAP OF  
**PERRY ROAD**  
 FROM  
 FOSTER BRIDGE ROAD  
 TO  
 HUNT'S CROSSING ROAD  
 CLARA STREET  
 RANCHO SAN ANTONIO

C. S. 7195  
 LEO V. YOUNG WORTH,  
 COUNTY SURVEYOR  
 MAY  
 1905

Scale 1 in. = 200 ft.  
 F. B. 30, 64-69

See C. S. 7708. Perry Road D: 2608-3, D: 3-278  
 Jaboneria Road changed to Vernon & Downey Road D: 13-76  
 Laguna & Florence Road changed to Baker Ave. D: 13-93  
 Hunt's Crossing Road changed to Clara St. D: 49-75  
 1M36

E TRACT  
 SAN ANTONIO

R. 59-36

See F. B. 16-5

Emil Paschke

Chas. Dockeman

Z. B. Sauer

Z. B. Sauer

ROAD BY  
 PACIFIC ELECTRIC R. R.  
 (See Map of 1905)

SCALE: ONE INCH = 50 FT.

SCALE: ONE INCH = 100 FT.

SCALE: ONE INCH = 100 FT.

SCALE: ONE INCH = 100 FT.

D: 3-278

D: 13-76

D: 13-93

D: 49-75