

Tor. Cert. A0-15666
 Charles H. Blazer
 - Mayme Alice Blazer
 D:995-226
 D:724-53
 D:5623-133
 D:6534-60
 N.P. 35876
 A. Josephine Wood
 Caroline W. McPherson
 M. Lauretta Chase
 Gladys M. Wyatt
 Tor. Cert. A0-15666

RANCHO
 c.s. 2278 F.M. 12280. 13347

MAP

OF THE SOUTHERN AVENUE \approx E:20-138
STEWART AND GRAY ROAD
 FROM
 OLD RIVER SCHOOL HOUSE ROAD
 TO
 RAYO AVE. \approx E:20-93
 COMPTON & JABONERIA ROAD

in Ranchos Santa Gertrudes & San Antonio
 Leo V. Youngworth Co. Sur. Scale 1 in = 200 feet

NOV. 1905 F. B. 30-74
 C. S. 7228

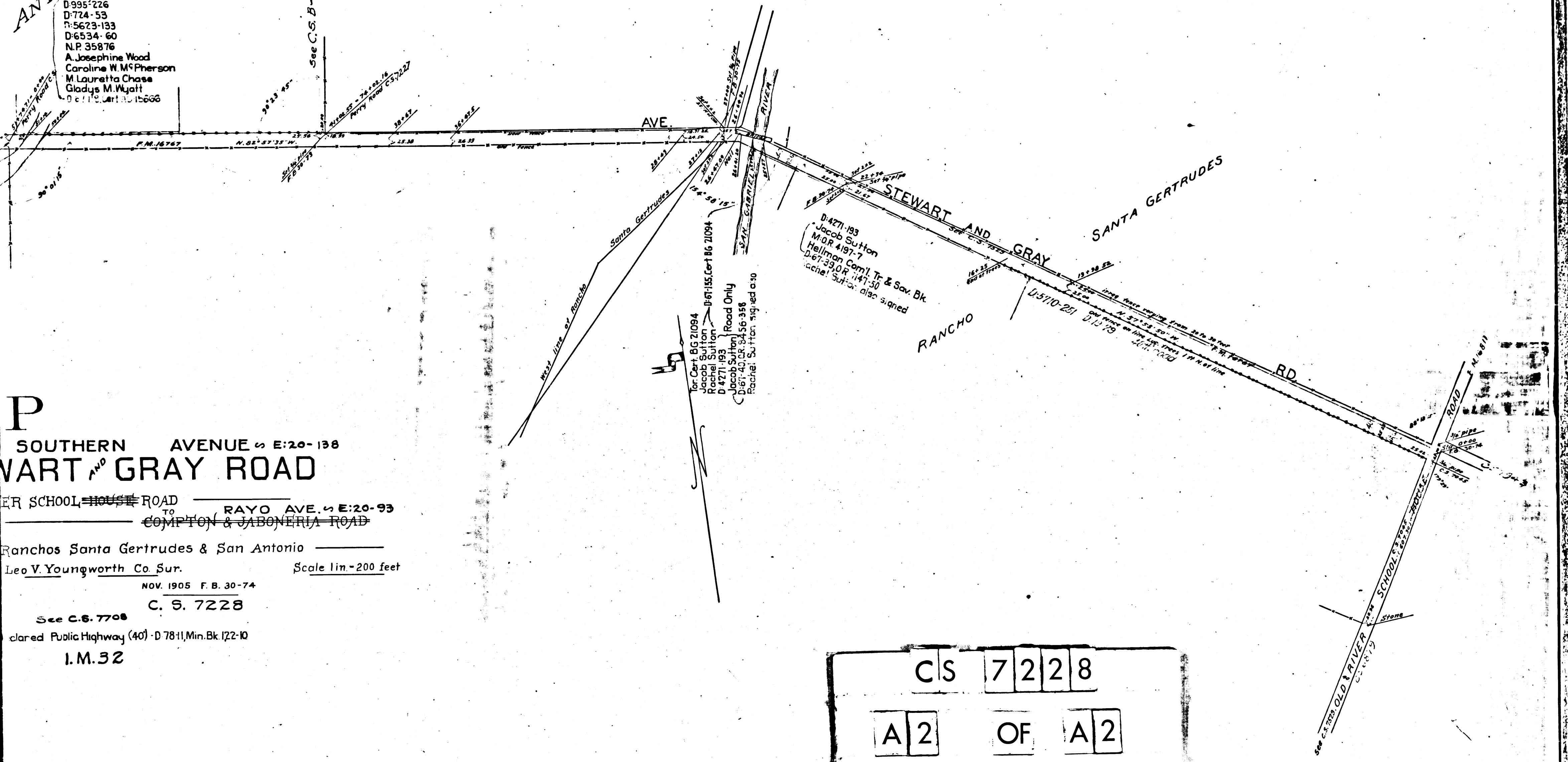
See C.S. 7708
 Declared Public Highway (40) - D 7811, Min. Bk 122-10
 I.M. 32

C	S	7	2	2	8
A	1	OF	A	2	

ANTONIO

Tor. Cert AO-15666
Charles H. Blazer
- Maime Alice Blazer
D:995-226
D:724-53
D:5623-133
D:6534-60
N.P. 35876
A. Josephine Wood
Caroline W. McPherson
M. Lauretta Chase
Gladys M. Wyatt
D:6118 Cert AO-15666

See C.S. B-149



P
SOUTHERN AVENUE \approx E:20-138
STEWART AND GRAY ROAD

ER SCHOOL HOUSE ROAD
TO RAYO AVE. \approx E:20-93
COMPTON & JABONERIA ROAD

Ranchos Santa Gertrudes & San Antonio
Leo V. Youngworth Co. Sur. Scale 1 in. = 200 feet

NOV. 1905 F. B. 30-74

C. S. 7228

See C.S. 7708

Declared Public Highway (40) - D 78-11, Min. Bk. 122-10

I.M. 32

CS 7228
A2 OF A2