

MAP

PROPOSED CHANGE

IN CASTAIC CAÑON ROAD

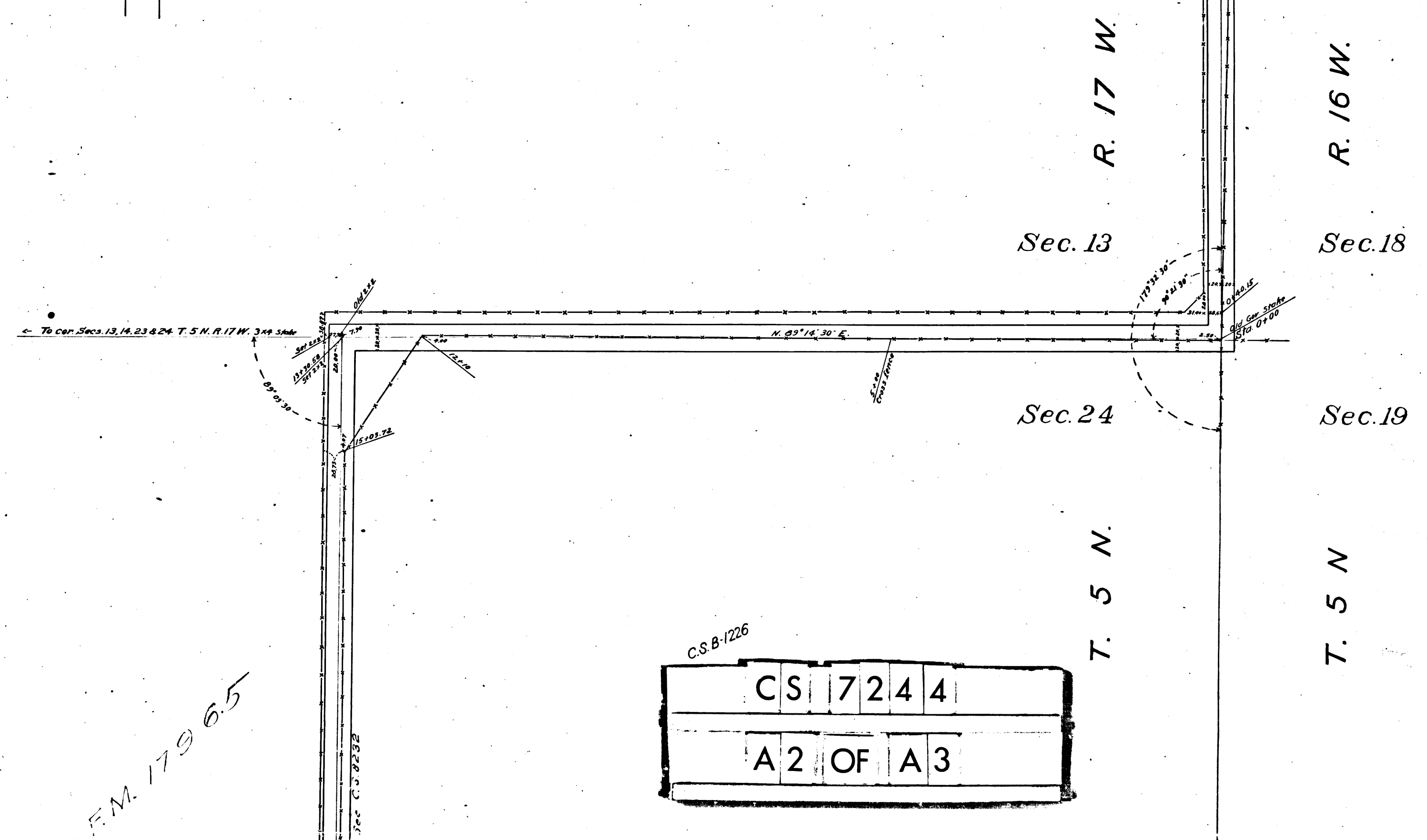
as shown on Co. Surveyors Map No 6631, through a portion of Sec. 24 and along a portion of Section lines between Sections 13, 24, 18 & 19, 1. S. N. Rs. 16 & 17 W. S. B. M.

LEO V. YOUNG WORTH Co. SUR. MAY 1906

1/11/17 C. S. 7244 Scale 1 in. = 100 feet

F. B. 25-56

See C. S. 8232



FM. 179 65

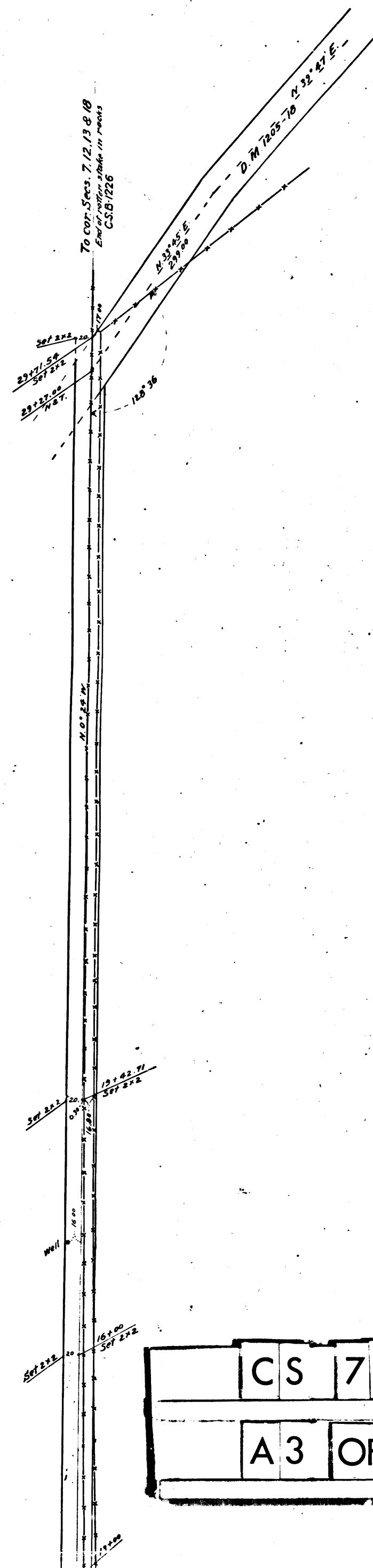
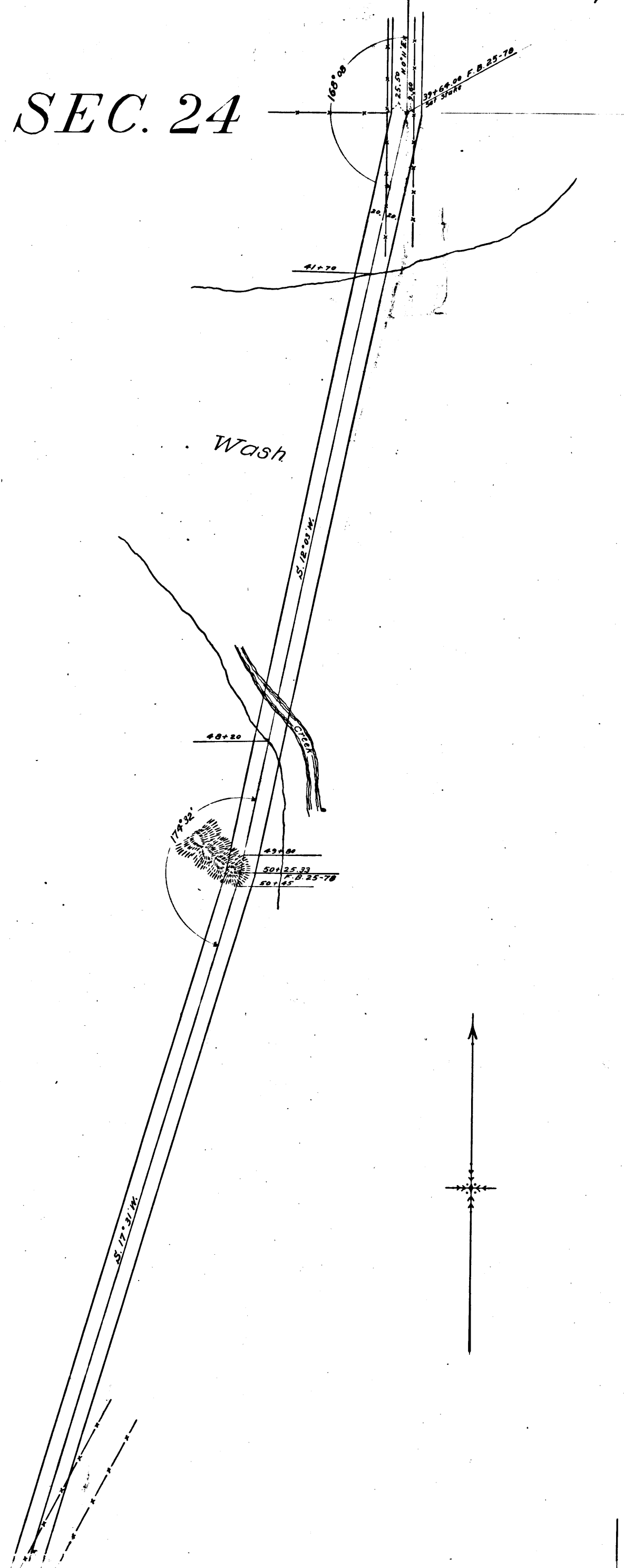
C.S.B-1226

CS	7	2	4	4
A	2	OF	A	3

R. 17 W.
R. 16 W.
T. 5 N.
T. 5 N.

Continued from left hand side of map

SEC. 24



ON ROAD
 Map No 6631, through
 a portion of Section lines
 19 1.5 N. Rs. 16 & 17 W. S. B. M.
 RTH Co. SUR. MAY 1906
 S. 7244 Scale 1 in = 100 feet
 F. B. 25-56479

CS	7	2	4	4
A	3	OF	A	3