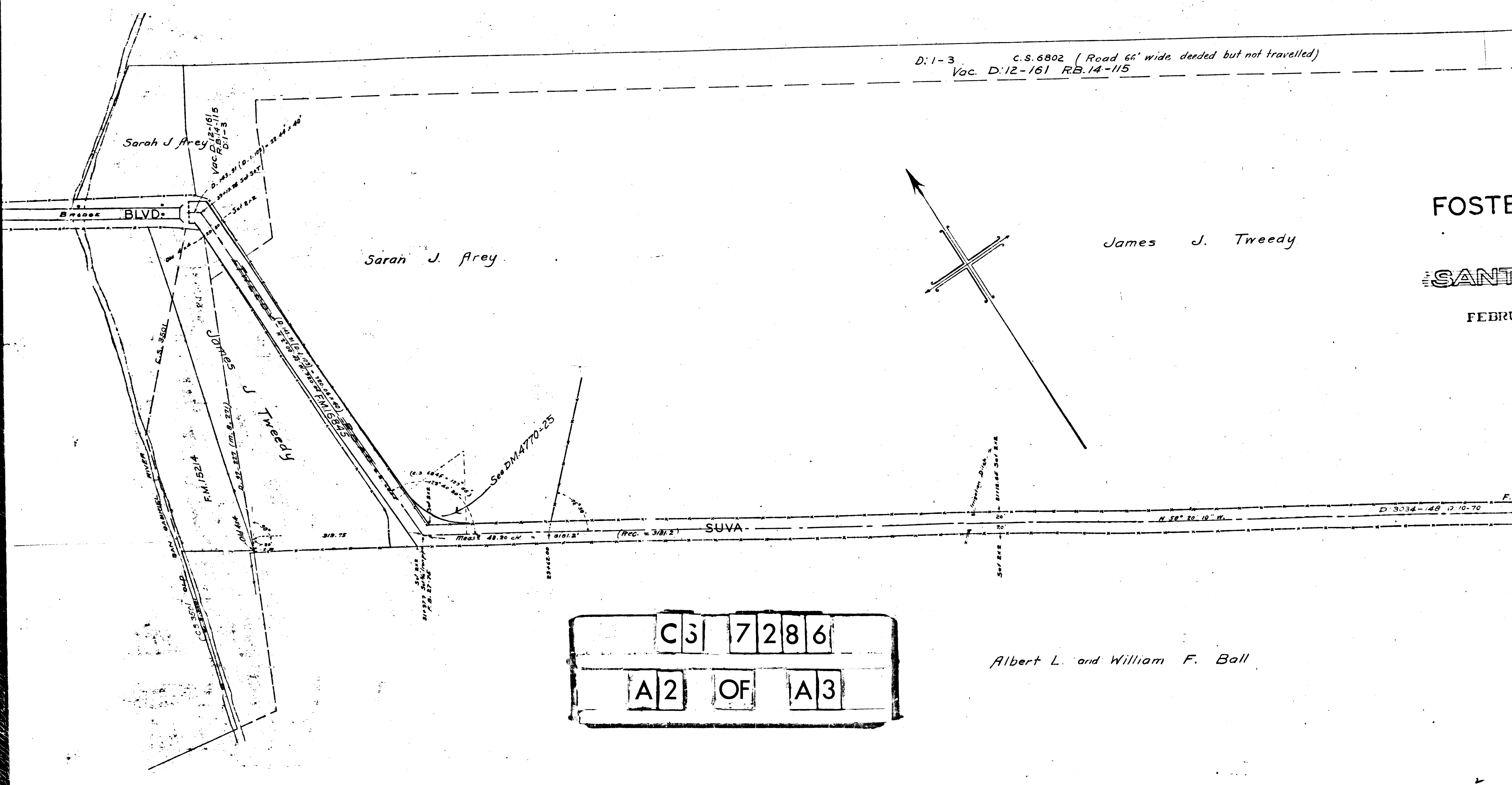


| | | | | |
|----|---|----|---|---|
| CS | 7 | 2 | 8 | 6 |
| A | 1 | OF | A | 3 |



D: 1-3 c.s. 6802 (Road 66' wide deeded but not travelled)
 Vac. D: 12-161 RB. 14-115

Sarah J. Frey

Sarah J. Frey

James J. Tweedy

FOSTER

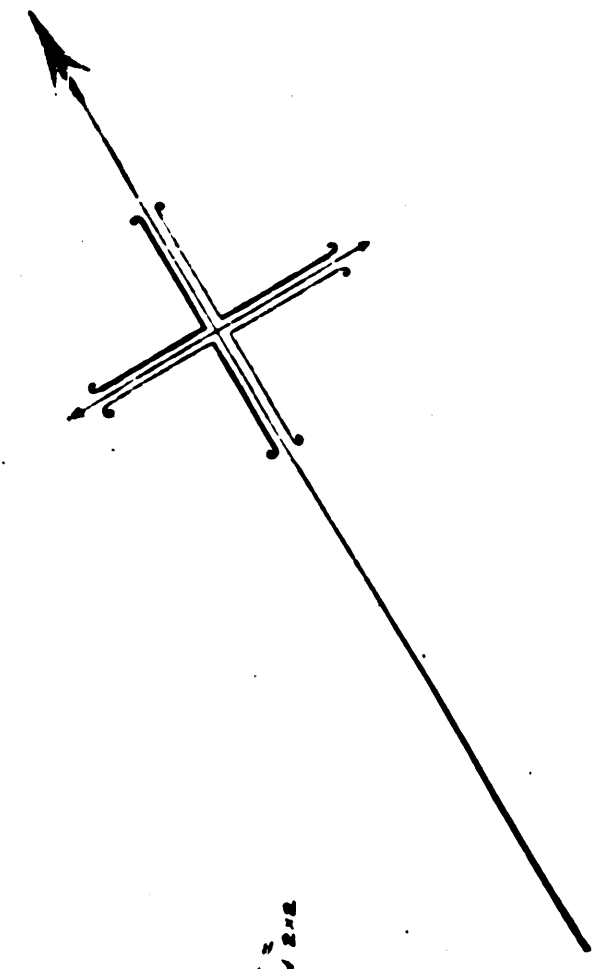
SANTA FE

FEBRUARY

| | | | | | |
|---|---|----|---|---|---|
| C | 3 | 7 | 2 | 8 | 6 |
| A | 2 | OF | A | 3 | |

Albert L. and William F. Ball

D:1-3 C.S. 6802 (Road 66' wide deeded but not travelled)
Vac. D:12-161 RB.14-115



James J. Tweedy

INDEX 36

Map of
FOSTER BRIDGE BLVD. AND SUVA ST.
~~TWEEDY ROAD~~

TWEEDY FROM LANE
~~SANTA GERTRUDES ROAD~~ WESTERLY

FEBRUARY 1907

IVORY B. NOBLE COUNTY SURVEYOR
COUNTY SURVEYORS MAP NO. 7286

SCALE 1 inch = 100 feet.
F.B. 27 - 75

Note: property owners names are as shown in
Assessors Book.

See C.S. 7708-2

Jaboneria Road and Tweedy Road changed to Vernon and Downey Road D:13-76
Vernon and Downey Road changed to Foster Bridge Blvd. D:49-94

I. M. 32
I. M. 36

D:55-224 O.R. 6115-120

F.B. 16-7

D:3034-148 D:10-70

N. 58° 30' 10" W.

ST.

R.P. 175

LANE

Man pipe at Sta.
26+00.07 from South as shown
on Co. Surv. Map No. 7167

See D.M.
4718-269

TWEEDY

Albert L. and William F. Ball

