

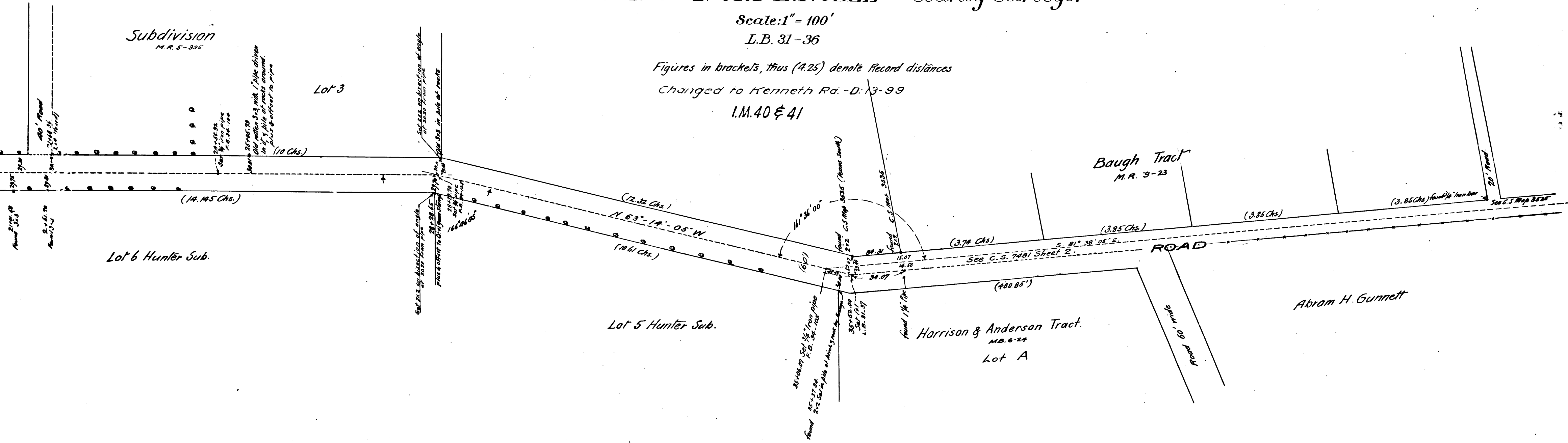
CS 7481-1
 A1 OF A2

COUNTY SURVEYORS MAP No 7481
 SHEET 1.
KENNETH MAP OF RD.
BAUGH ROAD
 in Hunter's Sub.
 M.R. 5-395

March 1908 IVORY B. NOBLE County Surveyor

Scale: 1" = 100'
 L.B. 31-36

Figures in brackets, thus (4.25) denote record distances
 Changed to Kenneth Rd. - D: 13-99
 I.M. 40 & 41



CS 7481-1
 A2 OF A2