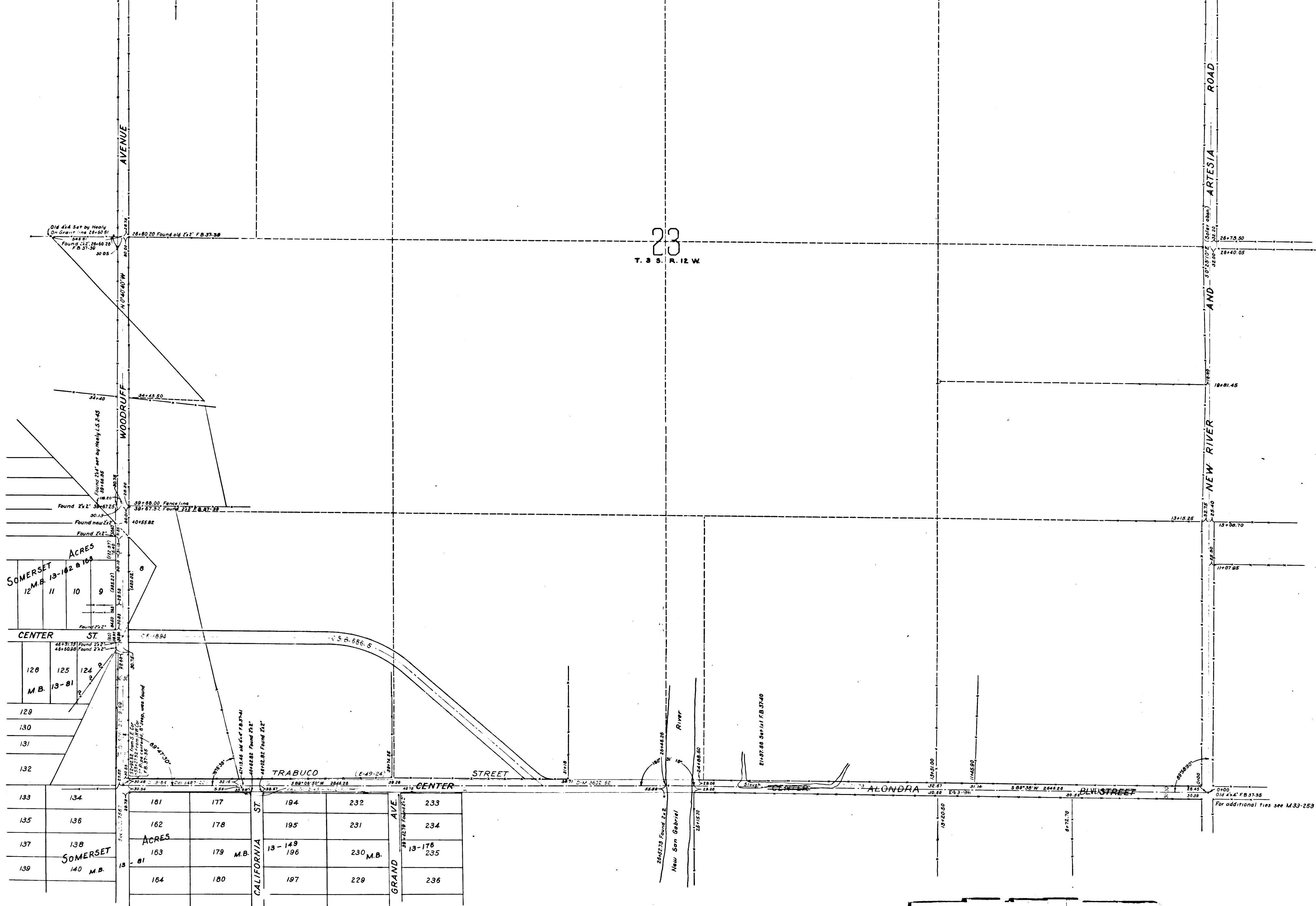


23
T. 3 S. R. 12 W.



SOMERSET ACRES
12 M.B. 13-162 & 108

CENTER ST

126 125 124
M.B. 13-81

133 134
135 136
137 138
139 140
SOMERSET
M.B.

161	177	194	232	233
162	178	195	231	234
163	179 M.B.	196	230 M.B.	235
164	180	197	229	236

CS 7492
A1 OF A2

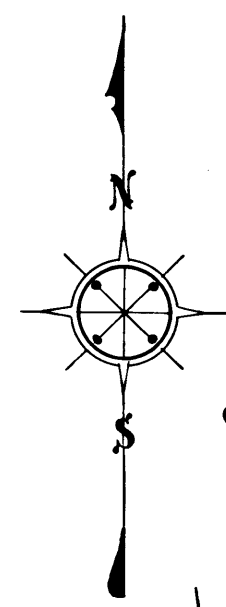
For additional ties see M33-253

COUNTY SURVEYORS MAP No 7492
MAP OF
SEC. 23 T.3 S. R.12 W

May 1908 **IVORY B. NOBLE** County Surveyor

Scale, 200 ft. to 1 in.
 F.B. 37-35

Note: Figures thus (1221) are from records
 Norwalk and Clearwater Rd changed to Rosecrans Ave.—D: 48-105
 New River and Artesia Rd. changed to Studebaker Rd.—D: 48-105



COUNTY SURVEYORS MAP NO. 7492

